

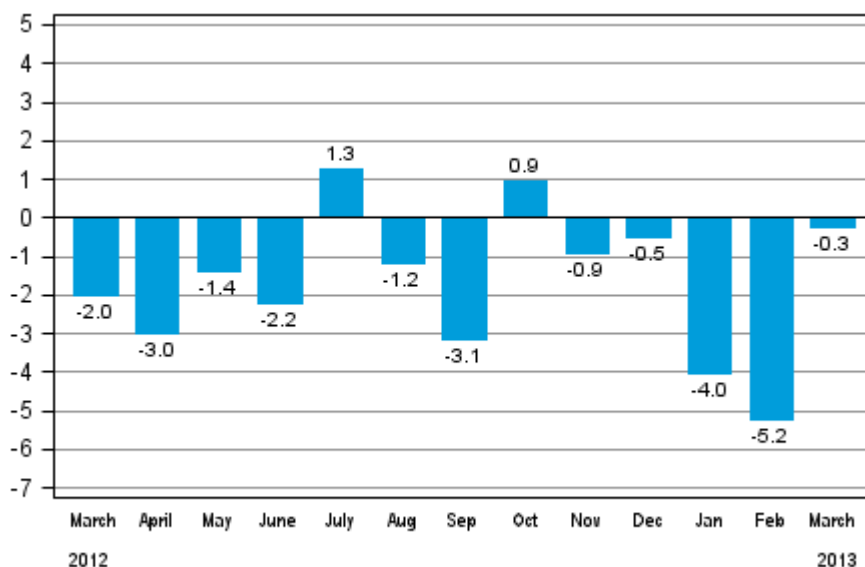
Volume index of industrial output

2013, March

Industrial output decreased by 0.3 per cent year-on-year in March

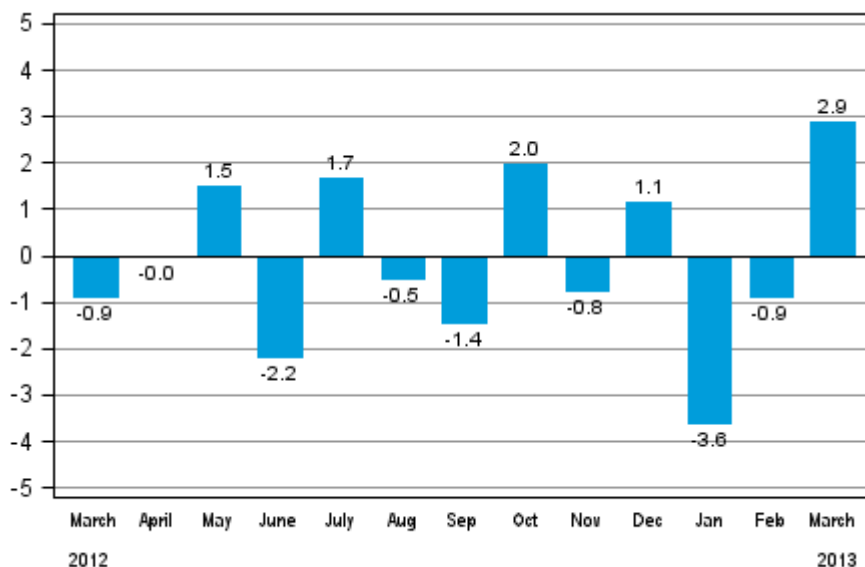
According to Statistics Finland, output of total industries adjusted for working days was 0.3 per cent lower in March 2013 than twelve months earlier. In the first quarter of 2013, industrial output adjusted for working days went down by three per cent from one year ago.

Working day adjusted change in industrial output (BCDE) from corresponding month previous year, %, TOL 2008



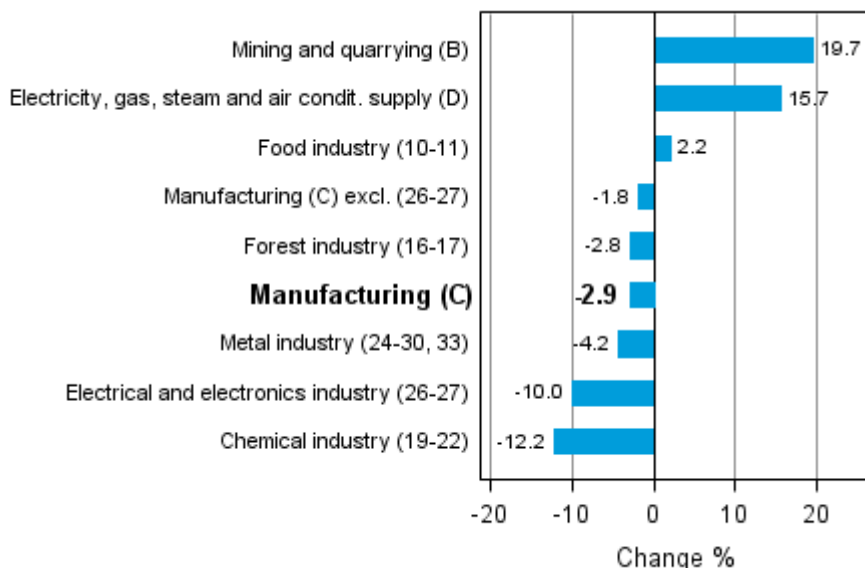
Seasonally adjusted output increased in March by 2.9 per cent from February. In February, seasonally adjusted output was 0.9 per cent lower than in January. In January, output decreased by 3.6 per cent from the previous month.

Seasonally adjusted change in industrial output (BCDE) from previous month, %, TOL 2008



Industrial output diminished in several main industries in March. Output fell most in the chemical industry, by 12.2 per cent. Output in the electrical and electronics industry decreased by 10.0 per cent and in the metal industry by 4.2 per cent. Among main industries, output increased most in mining and quarrying, which grew by nearly 20 per cent compared with the year before. The output in the food industry grew by 2.2 per cent from March 2012.

Working day adjusted change in industrial output by industry 3/2012-3/2013, %, TOL 2008



Capacity utilisation rate in manufacturing (C) was 79.6 per cent in March, or 4.3 percentage points lower than one year earlier. In the forest industry, capacity utilisation rate was 84.1 per cent in March, or 1.3 percentage points lower than in March 2012. In the metal industry, capacity utilisation rate was 79.4 per cent in March, which was 7.1 percentage points lower than one year earlier.

Revised data for March 2013 will be published at 9 am on 10 June 2013 in connection with the release of industrial output data for April 2013. The revision is influenced by the estimation used in the latest release, which concerns the periodic tax return data used for enterprises with fewer than 50 employees. Because of the method used, seasonally adjusted figures for previous months may change even if the original figures do not become revised. The seasonally adjusted figures will also be adjusted for working days.

The base year 2010 is utilised for the calculation of the Volume Index of Industrial Output starting from the statistics for January 2013.

Contents

Industrial output decreased by 0.3 per cent year-on-year in March	5
---	---

Tables

Table 1. Volume index of industrial output, value added, original, working day adjusted, seasonally adjusted change percentage.....	6
---	---

Figures

Appendix figures

Appendix figure 1. Working day adjusted change percentage of industrial output March 2012 /March 2013, TOL 2008.....	7
Appendix figure 2. Seasonally adjusted change percentage of industrial output February 2013 /March 2013, TOL 2008.....	7
Appendix figure 3. Trend of industrial output Finland, Germany, Sweden and France (BCD) 2000 - 2013, 2010=100, TOL 2008.....	8

Revisions in these statistics.....	9
------------------------------------	---

Industrial output decreased by 0.3 per cent year-on-year in March

According to Statistics Finland, output of total industries adjusted for working days was 0.3 per cent lower in March 2013 than twelve months earlier. Seasonally adjusted output grew by 2.9 per cent in March from February.

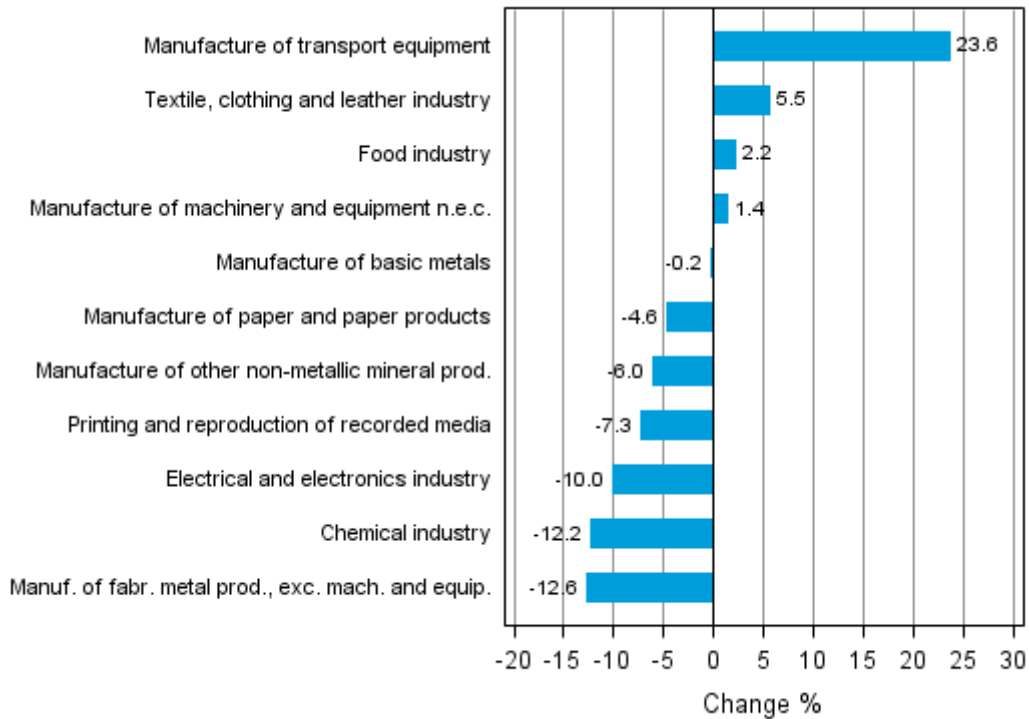
Adjusted for working days, industrial output (C) decreased by 2.9 per cent in March from one year back. Seasonally adjusted output increased in March by 2.6 per cent from February.

Table 1. Volume index of industrial output, value added, original, working day adjusted, seasonally adjusted change percentage

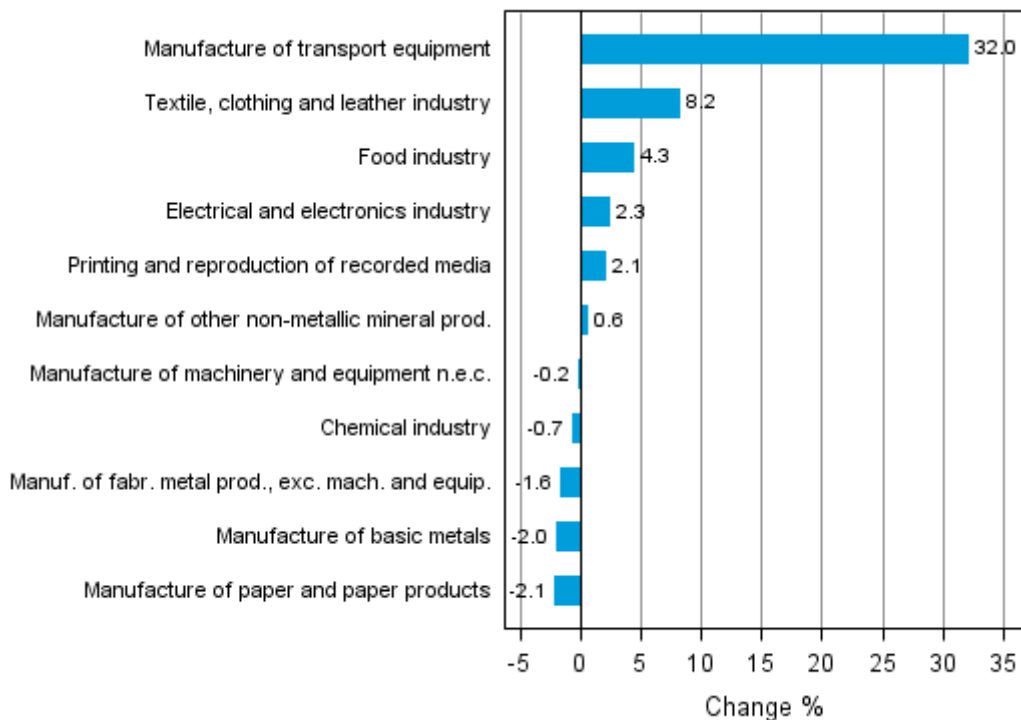
	Value added share	Original change percentage, 2013 MAR / 2012 MAR	Working day adj. change percentage, 2013 MAR / 2012 MAR	Seasonal adj. change percentage, 2013 MAR / 2013 FEB
Industry (Tol 2008)				
Total industries	100,0	-7,4	-0,3	2,9
B Mining and quarrying	3,8	11,6	19,7	1,3
C Manufacturing	82,9	-11,1	-2,9	2,6
10 Manufacture of food products	6,2	-5,8	3,6	11,2
11 Manufacture of beverages	1,3	-14,9	-8,7	-6,8
13 Manufacture of textiles	0,6	-13,0	-1,2	6,0
14 Manufacture of wearing apparel	0,4	-2,4	7,6	0,8
15 Manufacture of leather and related products	0,3	-25,6	-10,8	3,7
16 Manufacture of wood and of products of wood and cork, except furniture; manufacture of articles of straw and plaiting materials	3,6	-14,5	1,0	0,8
17 Manufacture of paper and paper products	9,5	-4,6	-4,6	-2,1
18 Printing and reproduction of recorded media	1,7	-14,7	-7,3	2,1
23 Manufacture of other non-metallic mineral products	3,6	-20,5	-6,0	0,6
24 Manufacture of basic metals	4,2	-0,5	-0,2	-2,0
25 Manufacture of fabricated metal products, except machinery and equipment	7,5	-20,0	-12,6	-1,6
28 Manufacture of machinery and equipment n.e.c.	13,3	-8,6	1,4	-0,2
29 Manufacture of motor vehicles, trailers and semi-trailers	1,3	2,4	23,9	21,5
30 Manufacture of other transport equipment	1,3	6,8	20,8	7,0
31 Manufacture of furniture	1,1	-13,2	-3,9	0,0
32 Other manufacturing	0,8	46,9	57,7	66,0
33 Repair and installation of machinery and equipment	3,1	-23,9	-16,0	-1,0
D Electricity, gas, steam and air conditioning supply	10,2	15,6	15,7	6,3
E Water supply; sewerage, waste management and remediation activities	3,1	-6,7	-0,6	2,9
36 Water collection, treatment and supply	1,6	-5,8	-4,0	1,5
Main industrial groupings:				
Raw materials and productive goods	42,5	-8,7	-0,8	1,6
Investment goods	27,2	-11,3	-4,6	2,1
Durable goods	1,5	-15,2	1,5	5,6
Other consumer goods	13,1	-12,1	-7,9	-0,6
Special indices:				
10-11 Food industry	7,5	-7,6	2,2	4,3
13-15 Textile, clothing and leather industry	1,3	-12,8	5,5	8,2
16-17 Forest industry	13,1	-7,5	-2,8	-1,3
19-22 Chemical industry	13,1	-12,2	-12,2	-0,7
24-30 Metal industry	37,7	-10,9	-3,1	1,8
26-27 Electrical and electronics industry	10,2	-15,7	-10,0	2,3
25,28-30,33 Machinery and metal product industry	26,4	-12,7	-1,6	2,4
29-30 Manufacture of transport equipment	2,6	4,8	23,6	32,0

Appendix figures

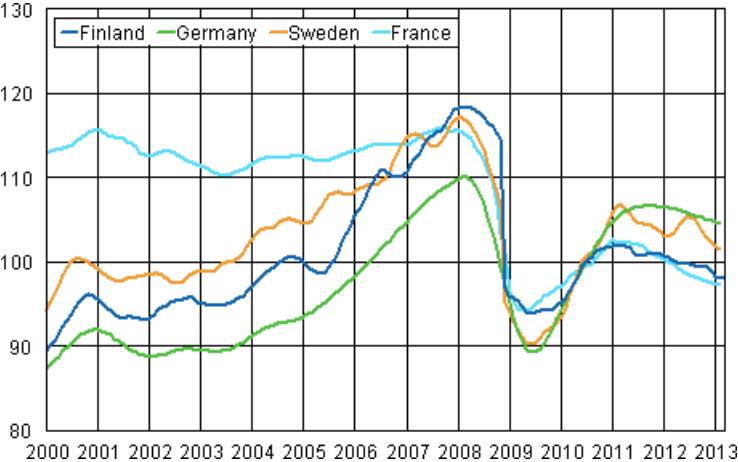
Appendix figure 1. Working day adjusted change percentage of industrial output March 2012 /March 2013, TOL 2008



Appendix figure 2. Seasonally adjusted change percentage of industrial output February 2013 /March 2013, TOL 2008



Appendix figure 3. Trend of industrial output Finland, Germany, Sweden and France (BCD) 2000 - 2013, 2010=100, TOL 2008



Revisions in these statistics

The data of the statistics have become revised according to the table below. For more information about data revisions, see Section 3 of the quality description (only in Finnish).

Revisions to data on annual changes in main industries

Main industries and Statistical reference month		Annual change (%)		Revision (%-point)
		1st release (%)	Latest release (10.05.2013) (%)	
BCDE Total industry	2012 / 10	3,4	5,1	1,7
	2012 / 11	-2,1	-1,3	0,8
	2012 / 12	-6,9	-5,8	1,1
	2013 / 01	-3,5	-2,6	0,9
	2013 / 02	-6,1	-5,4	0,7
C Manufacturing	2012 / 10	3,2	5,4	2,2
	2012 / 11	-2,5	-2,0	0,5
	2012 / 12	-9,9	-9,2	0,7
	2013 / 01	-5,0	-4,0	1,0
	2013 / 02	-7,5	-6,6	0,9
D Electricity, gas, steam and air conditioning supply	2012 / 10	6,8	6,8	0,0
	2012 / 11	0,9	0,9	0,0
	2012 / 12	14,2	14,2	0,0
	2013 / 01	5,3	5,3	0,0
	2013 / 02	-4,3	-4,3	0,0
10-11 Food industry	2012 / 10	3,6	3,9	0,3
	2012 / 11	-3,7	-3,3	0,4
	2012 / 12	-12,0	-13,0	-1,0
	2013 / 01	-1,5	2,5	4,0
	2013 / 02	-6,8	-6,3	0,5
16-17 Forest industry	2012 / 10	4,4	5,3	0,9
	2012 / 11	3,6	3,3	-0,3
	2012 / 12	-2,5	-2,9	-0,4
	2013 / 01	3,4	4,2	0,8
	2013 / 02	-1,8	-1,3	0,5
19-22 Chemical industry	2012 / 10	8,0	8,3	0,3
	2012 / 11	11,4	11,0	-0,4
	2012 / 12	7,3	6,6	-0,7
	2013 / 01	-3,9	-2,1	1,8
	2013 / 02	-7,4	-6,9	0,5
24-30, 33 Metal industry	2012 / 10	1,4	4,5	3,1
	2012 / 11	-7,5	-5,4	2,1
	2012 / 12	-14,2	-12,9	1,3
	2013 / 01	-9,2	-8,6	0,6
	2013 / 02	-8,0	-6,5	1,5
26-27 Electrical and electronics industry	2012 / 10	-6,1	-0,6	5,5
	2012 / 11	-21,1	-13,6	7,5
	2012 / 12	-17,6	-15,9	1,7
	2013 / 01	-12,4	-13,4	-1,0
	2013 / 02	-16,8	-16,3	0,5

Main industries and Statistical reference month		Annual change (%)		Revision (%-point)
		1st release (%)	Latest release (10.05.2013) (%)	
Manufacturing excl. electrical and electronics industry	2012 / 10	5,0	6,3	1,3
	2012 / 11	1,3	-0,3	-1,6
	2012 / 12	-7,9	-8,1	-0,2
	2013 / 01	-4,0	-2,6	1,4
	2013 / 02	-6,2	-5,3	0,9

Suomen virallinen tilasto
Finlands officiella statistik
Official Statistics of Finland

Industry 2013

Inquiries

Kari Rautio 09 1734 2479

Salla Simola 09 1734 3308

Director in charge:

Hannele Orjala

volyymi.indeksi@stat.fi

www.stat.fi

Source: Volume Index of Industrial Output 2013, March. Statistics Finland