

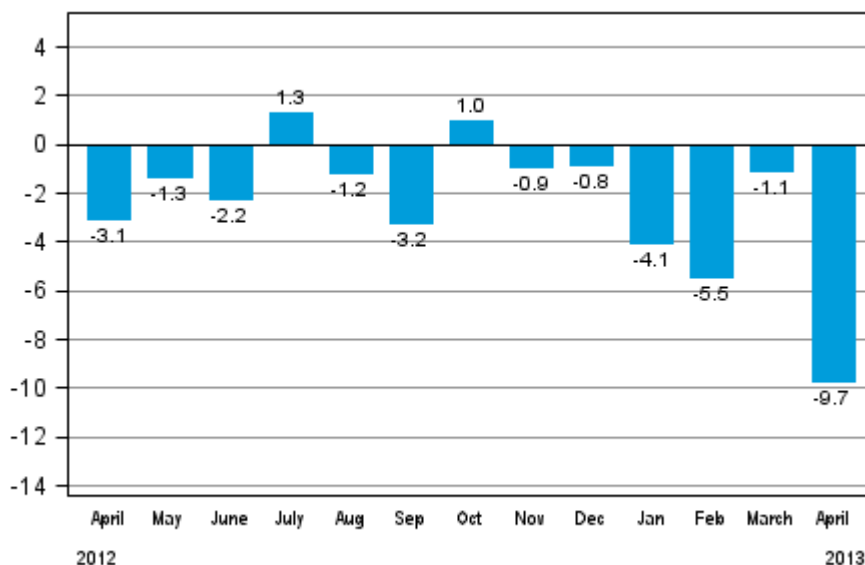
# Volume index of industrial output

2013, April

## Industrial output decreased by 9.7 per cent year-on-year in April

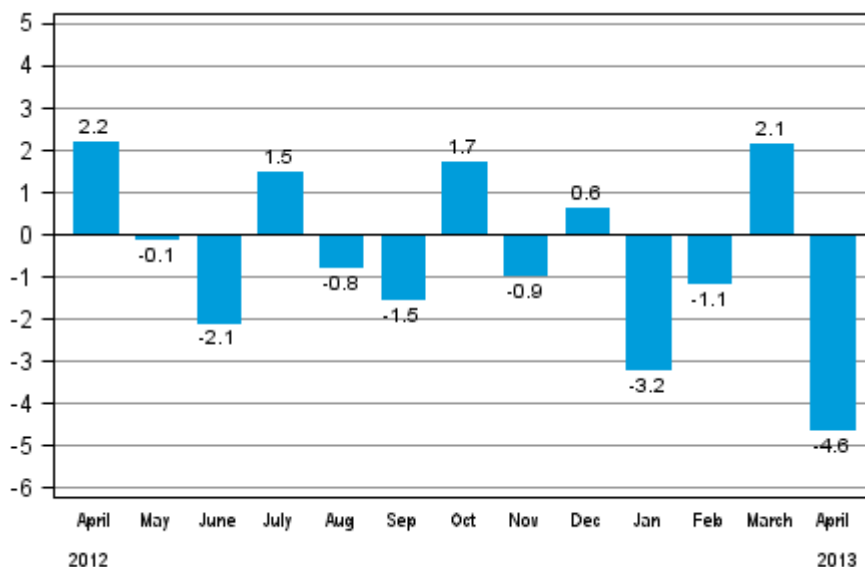
According to Statistics Finland, output of total industries adjusted for working days was 9.7 per cent lower in April 2013 than twelve months earlier. In the January to April period, industrial output adjusted for working days went down by 5.1 per cent from twelve months back. The industrial output figures in March and April were affected by Easter, which occurred in different months in 2012 and 2013. Original output of total industries went down by 3.3 per cent from one year back in April.

**Working day adjusted change in industrial output (BCDE) from corresponding month previous year, %, TOL 2008**



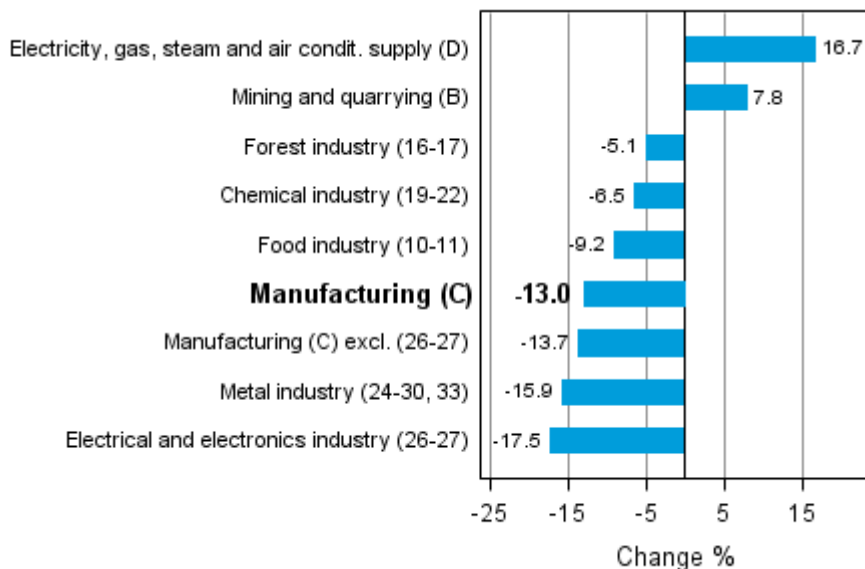
Seasonally adjusted output fell by 4.6 per cent from March in April. In March, seasonally adjusted output was 2.1 per cent higher than in February. In February, output decreased by 1.1 per cent from the previous month.

**Seasonally adjusted change in industrial output (BCDE) from previous month, %, TOL 2008**



Industrial output diminished in several main industries in April. Output fell most in the electrical and electronics industry, by 17.5 per cent and in the metal industry, by 15.9 per cent. Among the main industries, output increased by most, or by 16.7 per cent, in production of electricity. In mining and quarrying output was nearly eight per cent higher compared with the year before.

**Working day adjusted change in industrial output by industry 4/2012-4/2013, %, TOL 2008**



Capacity utilisation rate in manufacturing (C) was 82.7 per cent in April, or 0.4 percentage points higher than one year earlier. In the forest industry, capacity utilisation rate was 86.9 per cent in April, or 1.4 percentage points higher than in April 2012. In the metal industry, capacity utilisation rate was 84.1 per cent in April, which was 0.3 percentage points lower than one year earlier.

Revised data for April 2013 will be published at 9 am on 10 July 2013 in connection with the release of industrial output data for May 2013. The revision is influenced by the estimation used in the latest release, which concerns the periodic tax return data used for enterprises with fewer than 50 employees. Because of the method used, seasonally adjusted figures for previous months may change even if the original figures do not become revised. The seasonally adjusted figures will also be adjusted for working days.

# Contents

Industrial output decreased by 9.7 per cent year-on-year in April .....	5
---	---

## Tables

Table 1. Volume index of industrial output, value added, original, working day adjusted, seasonally adjusted change percentage.....	6
---	---

## Figures

### Appendix figures

Appendix figure 1. Working day adjusted change percentage of industrial output April 2012 /April 2013, TOL 2008.....	7
Appendix figure 2. Seasonally adjusted change percentage of industrial output March 2013 /April 2013, TOL 2008.....	7
Appendix figure 3. Trend of industrial output Finland, Germany, Sweden and France (BCD) 2000 - 2013, 2010=100, TOL 2008.....	8
Revisions in these statistics.....	9

## ***Industrial output decreased by 9.7 per cent year-on-year in April***

According to Statistics Finland, output of total industries adjusted for working days was 9.7 per cent lower in April 2013 than twelve months earlier. Seasonally adjusted output fell by 4.6 per cent from March in April.

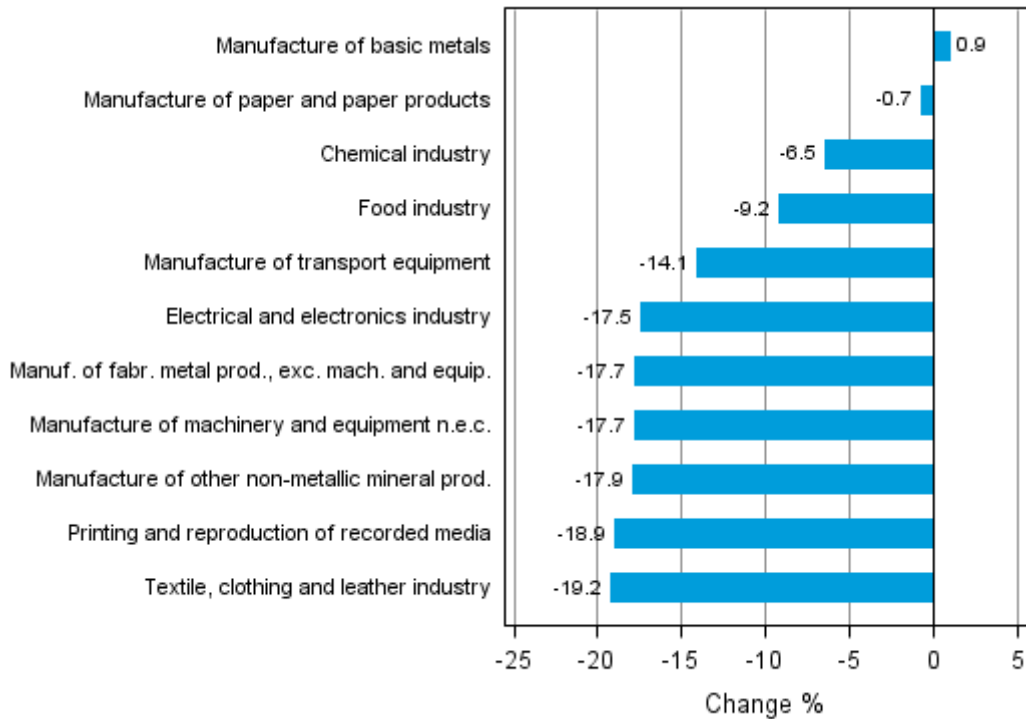
Adjusted for working days, industrial output (C) decreased by 13 per cent in April from one year back. Seasonally adjusted output fell by 4.9 per cent from March in April.

**Table 1. Volume index of industrial output, value added, original, working day adjusted, seasonally adjusted change percentage**

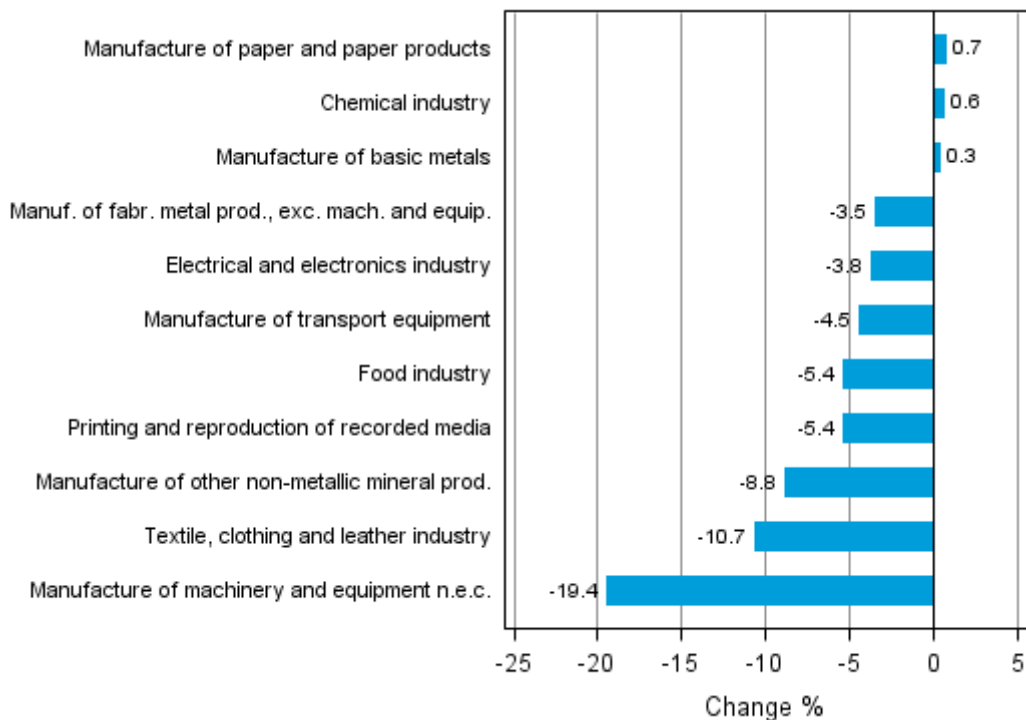
	Value added share	Original change percentage, 2013 APR / 2012 APR	Working day adj. change percentage, 2013 APR / 2012 APR	Seasonal adj. change percentage, 2013 APR / 2013 MAR
Industry (Tol 2008)				
Total industries	100,0	-3,3	-9,7	-4,6
B Mining and quarrying	3,8	3,1	7,8	-10,8
C Manufacturing	82,9	-6,0	-13,0	-4,9
10 Manufacture of food products	6,2	-0,3	-8,0	-2,2
11 Manufacture of beverages	1,3	-5,1	-10,4	-2,3
13 Manufacture of textiles	0,6	0,4	-12,9	-3,7
14 Manufacture of wearing apparel	0,4	-5,4	-13,9	-5,4
15 Manufacture of leather and related products	0,3	-15,1	-23,7	-5,8
16 Manufacture of wood and of products of wood and cork, except furniture; manufacture of articles of straw and plaiting materials	3,6	-0,7	-16,2	-8,6
17 Manufacture of paper and paper products	9,5	-0,7	-0,7	0,7
18 Printing and reproduction of recorded media	1,7	-11,8	-18,9	-5,4
23 Manufacture of other non-metallic mineral products	3,6	-5,5	-17,9	-8,8
24 Manufacture of basic metals	4,2	2,3	0,9	0,3
25 Manufacture of fabricated metal products, except machinery and equipment	7,5	-10,7	-17,7	-3,5
28 Manufacture of machinery and equipment n.e.c.	13,3	-8,5	-17,7	-19,4
29 Manufacture of motor vehicles, trailers and semi-trailers	1,3	5,7	-6,8	6,6
30 Manufacture of other transport equipment	1,3	-6,7	-16,5	-5,4
31 Manufacture of furniture	1,1	-7,5	-16,1	-4,3
32 Other manufacturing	0,8	21,9	14,4	-7,1
33 Repair and installation of machinery and equipment	3,1	-14,3	-21,5	-5,3
D Electricity, gas, steam and air conditioning supply	10,2	16,8	16,7	1,1
E Water supply; sewerage, waste management and remediation activities	3,1	-2,0	-7,4	-4,4
36 Water collection, treatment and supply	1,6	-2,2	-4,0	-0,9
Main industrial groupings:				
Raw materials and productive goods	42,5	-2,5	-8,3	-5,2
Investment goods	27,2	-10,6	-17,2	-5,6
Durable goods	1,5	-10,6	-24,1	-13,1
Other consumer goods	13,1	-8,0	-13,0	-12,8
Special indices:				
10-11 Food industry	7,5	-1,2	-9,2	-5,4
13-15 Textile, clothing and leather industry	1,3	-4,8	-19,2	-10,7
16-17 Forest industry	13,1	-0,7	-5,1	-1,9
19-22 Chemical industry	13,1	-6,5	-6,5	0,6
24-30 Metal industry	37,7	-8,2	-15,6	-5,6
26-27 Electrical and electronics industry	10,2	-12,9	-17,5	-3,8
25,28-30,33 Machinery and metal product industry	26,4	-9,0	-18,6	-16,8
29-30 Manufacture of transport equipment	2,6	-0,5	-14,1	-4,5

## Appendix figures

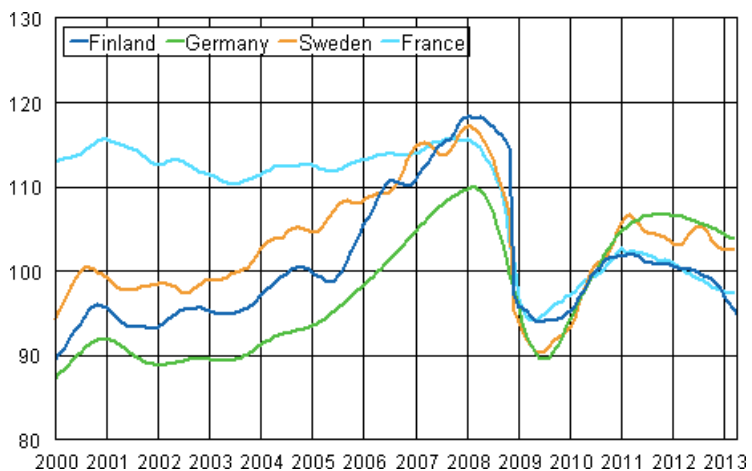
**Appendix figure 1. Working day adjusted change percentage of industrial output April 2012 /April 2013, TOL 2008**



**Appendix figure 2. Seasonally adjusted change percentage of industrial output March 2013 /April 2013, TOL 2008**



**Appendix figure 3. Trend of industrial output Finland, Germany, Sweden and France (BCD) 2000 - 2013, 2010=100, TOL 2008**





## Revisions in these statistics

The data of the original series of industrial output have become revised according to the table below. For more information about data revisions, see Section 3 of the quality description (only in Finnish).

### Revisions to data on annual changes in main industries

Main industries and Statistical reference month		Annual change (%)		Revision (%-point)
		1st release (%)	Latest release (10.06.2013) (%)	
BCDE Total industry	2012 / 11	-2,1	-1,3	0,8
	2012 / 12	-6,9	-6,0	0,9
	2013 / 01	-3,5	-2,6	0,9
	2013 / 02	-6,1	-5,6	0,5
	2013 / 03	-7,4	-7,5	-0,1
C Manufacturing	2012 / 11	-2,5	-2,0	0,5
	2012 / 12	-9,9	-9,4	0,5
	2013 / 01	-5,0	-3,9	1,1
	2013 / 02	-7,5	-6,8	0,7
	2013 / 03	-11,1	-11,2	-0,1
D Electricity, gas, steam and air conditioning supply	2012 / 11	0,9	0,9	0,0
	2012 / 12	14,2	14,2	0,0
	2013 / 01	5,3	5,3	0,0
	2013 / 02	-4,3	-4,3	0,0
	2013 / 03	15,6	15,6	0,0
10-11 Food industry	2012 / 11	-3,7	-3,3	0,4
	2012 / 12	-12,0	-13,0	-1,0
	2013 / 01	-1,5	2,5	4,0
	2013 / 02	-6,8	-6,2	0,6
	2013 / 03	-7,6	-7,5	0,1
16-17 Forest industry	2012 / 11	3,6	3,3	-0,3
	2012 / 12	-2,5	-2,9	-0,4
	2013 / 01	3,4	4,2	0,8
	2013 / 02	-1,8	-1,4	0,4
	2013 / 03	-7,5	-6,3	1,2
19-22 Chemical industry	2012 / 11	11,4	10,9	-0,5
	2012 / 12	7,3	6,5	-0,8
	2013 / 01	-3,9	-1,8	2,1
	2013 / 02	-7,4	-6,7	0,7
	2013 / 03	-12,2	-11,7	0,5
24-30, 33 Metal industry	2012 / 11	-7,5	-5,4	2,1
	2012 / 12	-14,2	-13,2	1,0
	2013 / 01	-9,2	-8,6	0,6
	2013 / 02	-8,0	-6,8	1,2
	2013 / 03	-12,1	-12,5	-0,4
26-27 Electrical and electronics industry	2012 / 11	-21,1	-13,5	7,6
	2012 / 12	-17,6	-15,5	2,1
	2013 / 01	-12,4	-13,5	-1,1
	2013 / 02	-16,8	-16,2	0,6
	2013 / 03	-15,7	-15,6	0,1

Main industries and Statistical reference month		Annual change (%)		Revision (%-point)
		1st release (%)	Latest release (10.06.2013) (%)	
Manufacturing excl. electrical and electronics industry	2012 / 11	1,3	-0,3	-1,6
	2012 / 12	-7,9	-8,4	-0,5
	2013 / 01	-4,0	-2,6	1,4
	2013 / 02	-6,2	-5,5	0,7
	2013 / 03	-10,4	-10,6	-0,2

---

Suomen virallinen tilasto  
Finlands officiella statistik  
Official Statistics of Finland

Industry 2013

### Inquiries

Kari Rautio 09 1734 2479

Salla Simola 09 1734 3308

Director in charge:

Hannele Orjala

[volyymi.indeksi@stat.fi](mailto:volyymi.indeksi@stat.fi)

[www.stat.fi](http://www.stat.fi)

Source: Volume Index of Industrial Output 2013, April. Statistics Finland