

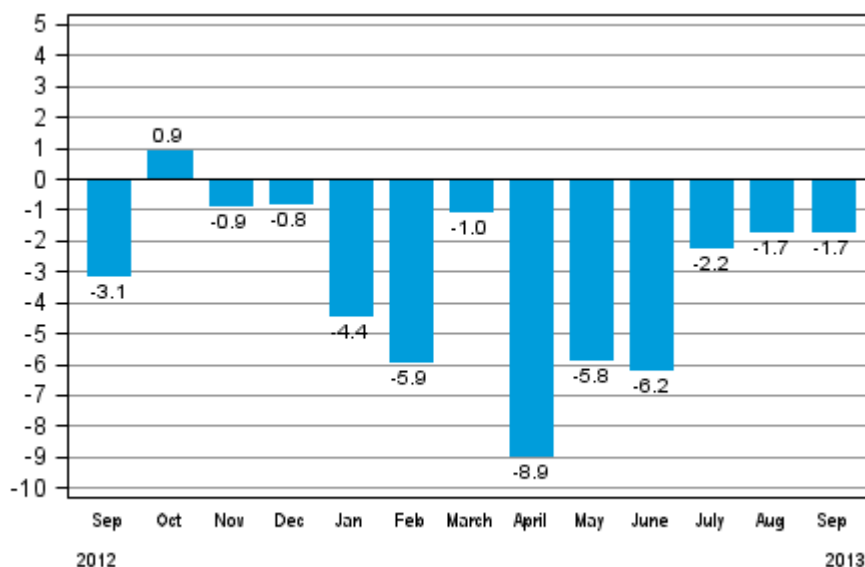
# Volume index of industrial output

2013, September

## Industrial output decreased by 1.7 per cent year-on-year in September

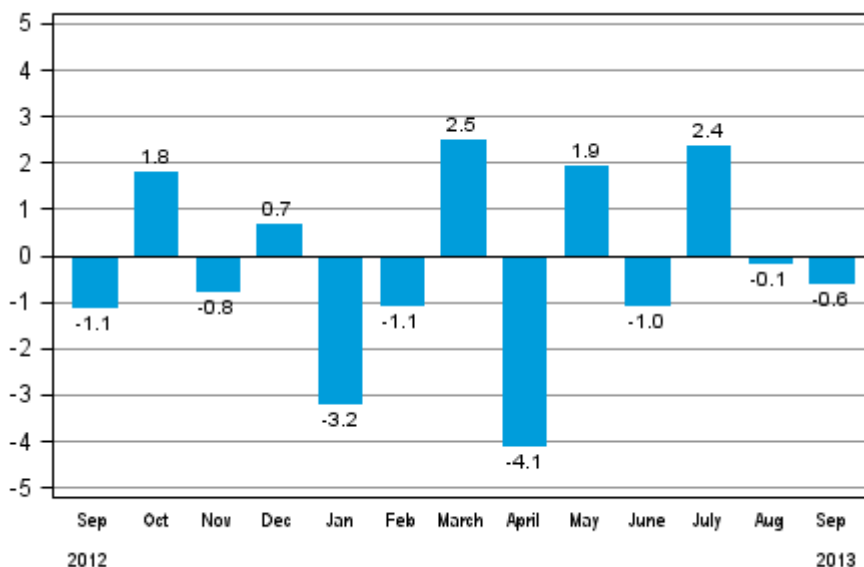
According to Statistics Finland, output of total industries adjusted for working days was 1.7 per cent lower in September 2013 compared to September 2012. In the January to September period, industrial output adjusted for working days went down by 4.2 per cent from twelve months back.

**Working day adjusted change in total industrial output (BCDE) from corresponding month previous year, %, TOL 2008**



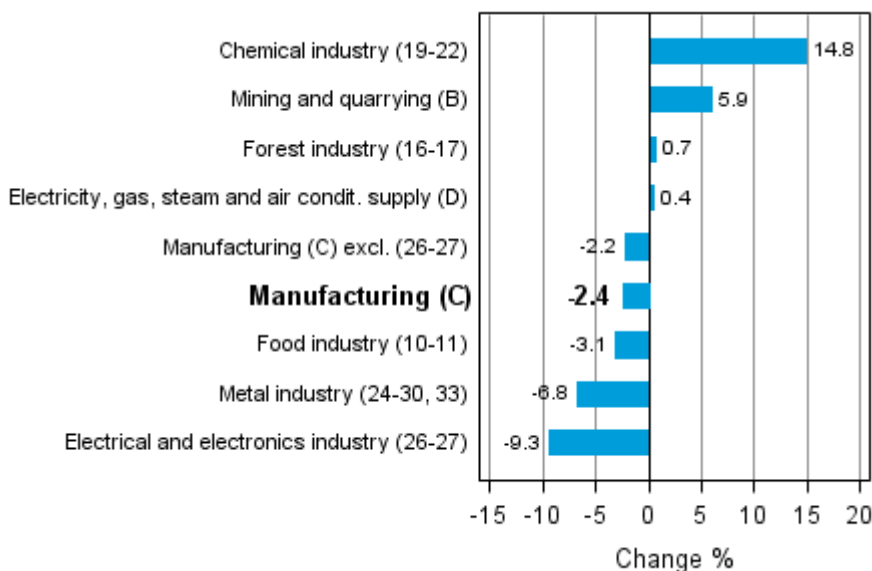
Seasonally adjusted output fell in September by 0.6 per cent compared with the previous month. In August, seasonally adjusted output was 0.1 per cent lower than in July. In July, output increased by 2.4 per cent from the previous month.

**Seasonally adjusted change in total industrial output (BCDE) from previous month, %, TOL 2008**



Industrial output diminished in several main industries in September. Output fell most in the electrical and electronics industry, by 9.3 per cent. In the metal industry, output went down by 6.8 per cent from the previous year. Among main industries, output increased by most, or by close on 15 per cent, in the chemical industry. In the forest industry, output also grew by 0.7 per cent from one year ago.

**Working day adjusted change in industrial output by industry 9/2012-9/2013, %, TOL 2008**



Capacity utilisation rate in manufacturing (C) was 80.7 per cent in September, or 0.3 percentage points lower than one year earlier. In the forest industry, capacity utilisation rate was 84.6 per cent in September, or 1.8 percentage points higher than in September 2012. In the metal industry, capacity utilisation rate was 80.3 per cent in September, which was 4.5 percentage points lower than one year earlier.

Revised data for September 2013 will be published at 9 am on 10 December 2013 in connection with the release of industrial output data for October 2013. The revision is influenced by the estimation used in the latest release, which concerns the periodic tax return data used for enterprises with fewer than 50 employees. Because of the method used, seasonally adjusted figures for previous months may change even if the original figures do not become revised. The seasonally adjusted figures will also be adjusted for working days.

# Contents

Industrial output decreased by 1.7 per cent year-on-year in September .....	5
-----------------------------------------------------------------------------	---

## Tables

Table 1. Volume index of industrial output, value added, original, working day adjusted, seasonally adjusted change percentage.....	6
-------------------------------------------------------------------------------------------------------------------------------------	---

## Figures

### Appendix figures

Appendix figure 1. Working day adjusted change percentage of industrial output September 2012 /September 2013, TOL 2008.....	7
Appendix figure 2. Seasonally adjusted change percentage of industrial output August 2013 /September 2013, TOL 2008.....	7
Appendix figure 3. Trend of industrial output Finland, Germany, Sweden and France (BCD) 2000 - 2013, 2010=100, TOL 2008.....	8

Revisions in these statistics.....	9
------------------------------------	---

## ***Industrial output decreased by 1.7 per cent year-on-year in September***

According to Statistics Finland, output of total industries adjusted for working days was 1.7 per cent lower in September 2013 compared to September 2012. Seasonally adjusted output fell by 0.6 per cent in September compared to August.

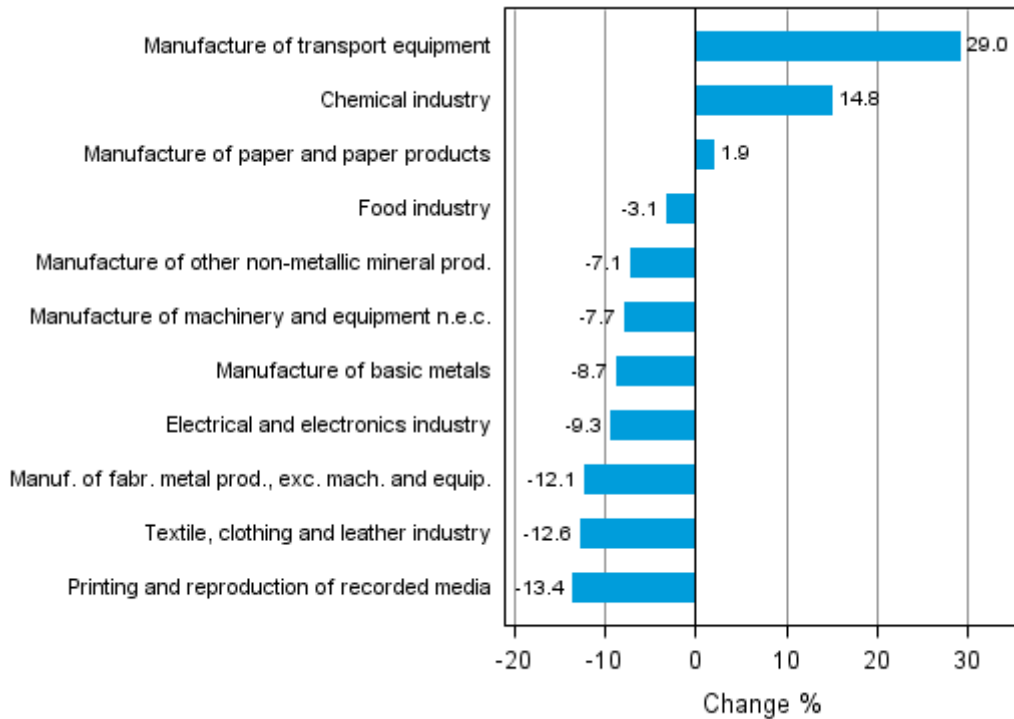
Adjusted for working days, industrial output (C) decreased by 2.4 per cent in September from one year back. Seasonally adjusted output increased in September by 0.4 per cent compared with the previous month.

**Table 1. Volume index of industrial output, value added, original, working day adjusted, seasonally adjusted change percentage**

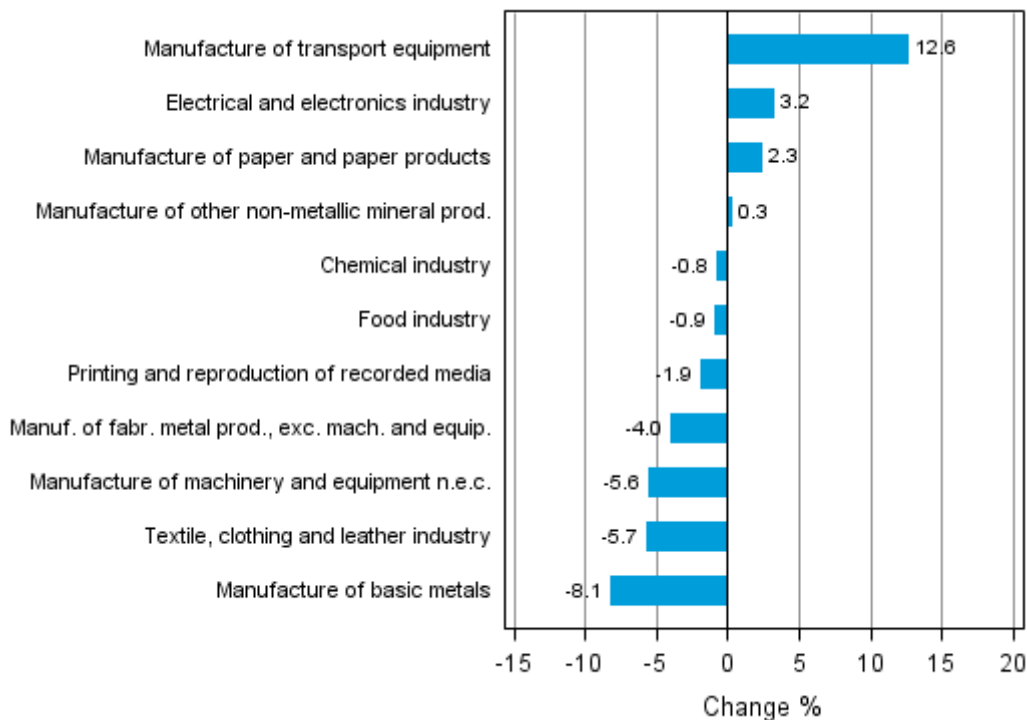
	Value added share	Original change percentage, 2013 SEP / 2012 SEP	Working day adj. change percentage, 2013 SEP / 2012 SEP	Seasonal adj. change percentage, 2013 SEP / 2013 AUG
Industry (Tol 2008)				
Total industries	100,0	-1,1	-1,7	-0,6
B Mining and quarrying	3,8	10,3	5,9	-14,8
C Manufacturing	82,9	-1,7	-2,4	0,4
10 Manufacture of food products	6,2	-2,2	-3,3	-1,0
11 Manufacture of beverages	1,3	-0,3	-3,5	1,1
13 Manufacture of textiles	0,6	-10,9	-12,3	-3,0
14 Manufacture of wearing apparel	0,4	-4,4	-4,4	-1,5
15 Manufacture of leather and related products	0,3	-13,3	-13,3	-4,4
16 Manufacture of wood and of products of wood and cork, except furniture; manufacture of articles of straw and plaiting materials	3,6	-0,3	-1,1	-1,5
17 Manufacture of paper and paper products	9,5	1,9	1,9	2,3
18 Printing and reproduction of recorded media	1,7	-11,9	-13,4	-1,9
23 Manufacture of other non-metallic mineral products	3,6	-6,1	-7,1	0,3
24 Manufacture of basic metals	4,2	-9,0	-8,7	-8,1
25 Manufacture of fabricated metal products, except machinery and equipment	7,5	-12,1	-12,1	-4,0
28 Manufacture of machinery and equipment n.e.c.	13,3	-6,8	-7,7	-5,6
29 Manufacture of motor vehicles, trailers and semi-trailers	1,3	43,3	43,3	51,8
30 Manufacture of other transport equipment	1,3	24,7	24,7	3,3
31 Manufacture of furniture	1,1	-14,1	-14,1	-2,3
32 Other manufacturing	0,8	10,2	6,8	8,7
33 Repair and installation of machinery and equipment	3,1	-0,1	-1,3	3,2
D Electricity, gas, steam and air conditioning supply	10,2	0,5	0,4	-1,4
E Water supply; sewerage, waste management and remediation activities	3,1	-4,6	-5,5	-1,8
36 Water collection, treatment and supply	1,6	-4,1	-4,1	-0,5
Main industrial groupings:				
Raw materials and productive goods	42,5	-0,1	-0,8	-2,1
Investment goods	27,2	-4,2	-4,1	-0,3
Durable goods	1,5	-15,0	-16,5	-4,8
Other consumer goods	13,1	1,2	1,2	3,2
Special indices:				
10-11 Food industry	7,5	-1,9	-3,1	-0,9
13-15 Textile, clothing and leather industry	1,3	-9,7	-12,6	-5,7
16-17 Forest industry	13,1	1,3	0,7	0,9
19-22 Chemical industry	13,1	14,8	14,8	-0,8
24-30 Metal industry	37,7	-6,5	-7,2	-1,9
26-27 Electrical and electronics industry	10,2	-9,8	-9,3	3,2
25,28-30,33 Machinery and metal product industry	26,4	-4,1	-4,7	-1,4
29-30 Manufacture of transport equipment	2,6	33,8	29,0	12,6

## Appendix figures

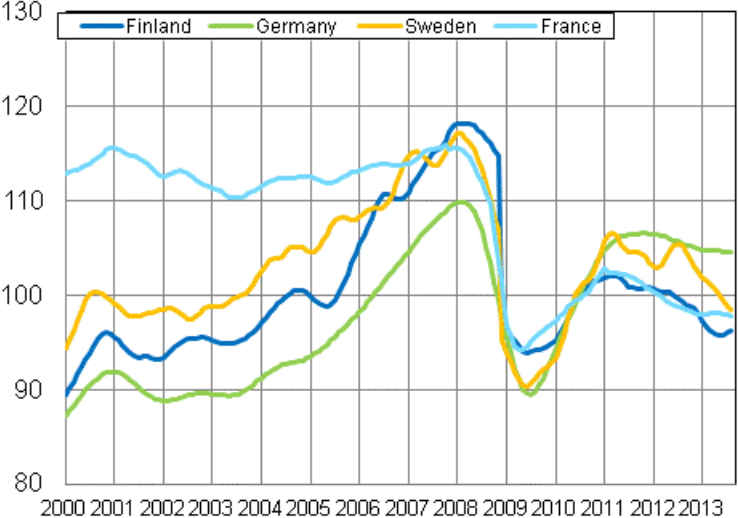
**Appendix figure 1. Working day adjusted change percentage of industrial output September 2012 /September 2013, TOL 2008**



**Appendix figure 2. Seasonally adjusted change percentage of industrial output August 2013 /September 2013, TOL 2008**



**Appendix figure 3. Trend of industrial output Finland, Germany, Sweden and France (BCD) 2000 - 2013, 2010=100, TOL 2008**





## Revisions in these statistics

The data of the original series of industrial output have become revised according to the table below. For more information about data revisions, see Section 3 of the quality description (only in Finnish).

### Revisions to data on annual changes in main industries

Main industries and Statistical reference month		Annual change (%)		Revision (%-point)
		1st release (%)	Latest release (08.11.2013) (%)	
BCDE Total industry	2013 / 04	-3,5	-2,4	1,1
	2013 / 05	-5,3	-5,3	0,0
	2013 / 06	-7,8	-8,3	-0,5
	2013 / 07	-0,6	-0,3	0,3
	2013 / 08	-2,7	-2,9	-0,2
C Manufacturing	2013 / 04	-6,2	-4,8	1,4
	2013 / 05	-8,5	-8,5	0,0
	2013 / 06	-8,2	-8,8	-0,6
	2013 / 07	-2,7	-2,4	0,3
	2013 / 08	-6,0	-6,2	-0,2
D Electricity, gas, steam and air conditioning supply	2013 / 04	16,8	16,8	0,0
	2013 / 05	7,2	6,7	-0,5
	2013 / 06	-10,8	-10,8	0,0
	2013 / 07	-2,4	-2,4	0,0
	2013 / 08	2,3	2,3	0,0
10-11 Food industry	2013 / 04	-2,3	-0,6	1,7
	2013 / 05	1,9	2,1	0,2
	2013 / 06	-1,9	-2,0	-0,1
	2013 / 07	7,3	7,8	0,5
	2013 / 08	-4,1	-4,1	0,0
16-17 Forest industry	2013 / 04	-0,7	-0,1	0,6
	2013 / 05	-1,1	-0,6	0,5
	2013 / 06	-4,7	-4,9	-0,2
	2013 / 07	-1,3	-0,9	0,4
	2013 / 08	-3,7	-3,8	-0,1
19-22 Chemical industry	2013 / 04	-6,5	-5,6	0,9
	2013 / 05	-2,9	-3,3	-0,4
	2013 / 06	-3,3	-5,8	-2,5
	2013 / 07	2,5	1,9	-0,6
	2013 / 08	-5,2	-6,1	-0,9
24-30, 33 Metal industry	2013 / 04	-9,0	-7,3	1,7
	2013 / 05	-14,1	-14,1	0,0
	2013 / 06	-10,9	-11,3	-0,4
	2013 / 07	-5,4	-5,3	0,1
	2013 / 08	-5,3	-5,4	-0,1
26-27 Electrical and electronics industry	2013 / 04	-12,9	-13,0	-0,1
	2013 / 05	-20,6	-20,8	-0,2
	2013 / 06	-12,9	-13,2	-0,3
	2013 / 07	-17,0	-17,1	-0,1
	2013 / 08	-17,1	-18,6	-1,5

Main industries and Statistical reference month		Annual change (%)		Revision (%-point)
		1st release (%)	Latest release (08.11.2013) (%)	
Manufacturing excl. electrical and electronics industry	2013 / 04	-5,3	-3,7	1,6
	2013 / 05	-6,9	-6,8	0,1
	2013 / 06	-7,5	-8,2	-0,7
	2013 / 07	-0,5	-0,1	0,4
	2013 / 08	-4,6	-4,6	0,0

---

Suomen virallinen tilasto  
Finlands officiella statistik  
Official Statistics of Finland

Industry 2013

### Inquiries

Kari Rautio 09 1734 2479

Salla Simola 09 1734 3308

Director in charge:

Hannele Orjala

[volyymi.indeksi@stat.fi](mailto:volyymi.indeksi@stat.fi)

[www.stat.fi](http://www.stat.fi)

Source: Volume Index of Industrial Output 2013, September. Statistics Finland