

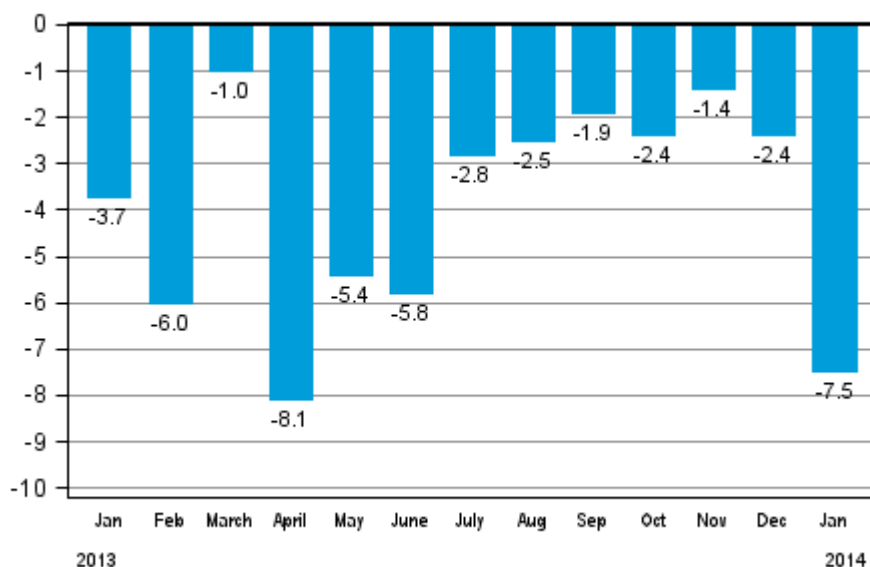
# Volume index of industrial output

2014, January

## Industrial output decreased by 7.5 per cent year-on-year in January

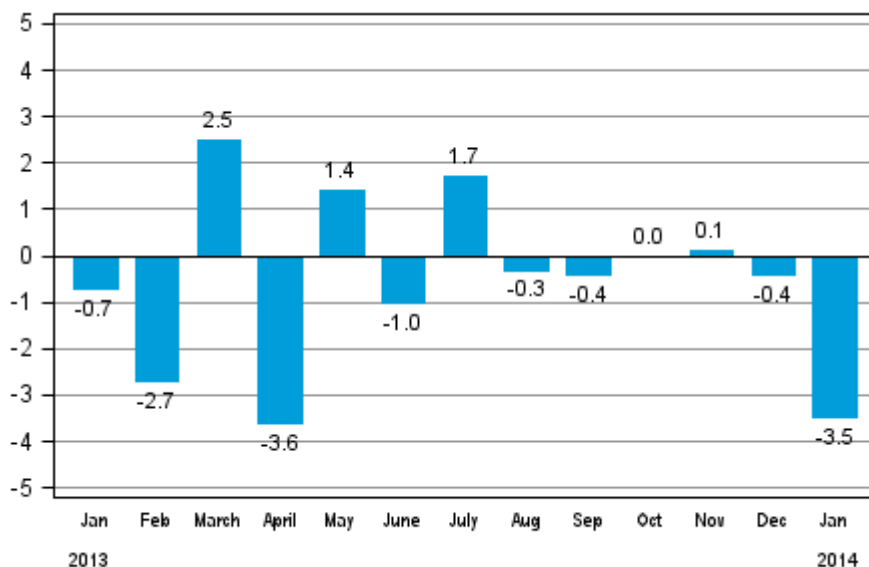
According to Statistics Finland, output of total industries adjusted for working days was 7.5 per cent lower in January 2014 than in January 2013. Industrial output has decreased non-stop for over a year.

**Working day adjusted change in total industrial output (BCDE) from corresponding month previous year, %, TOL 2008**



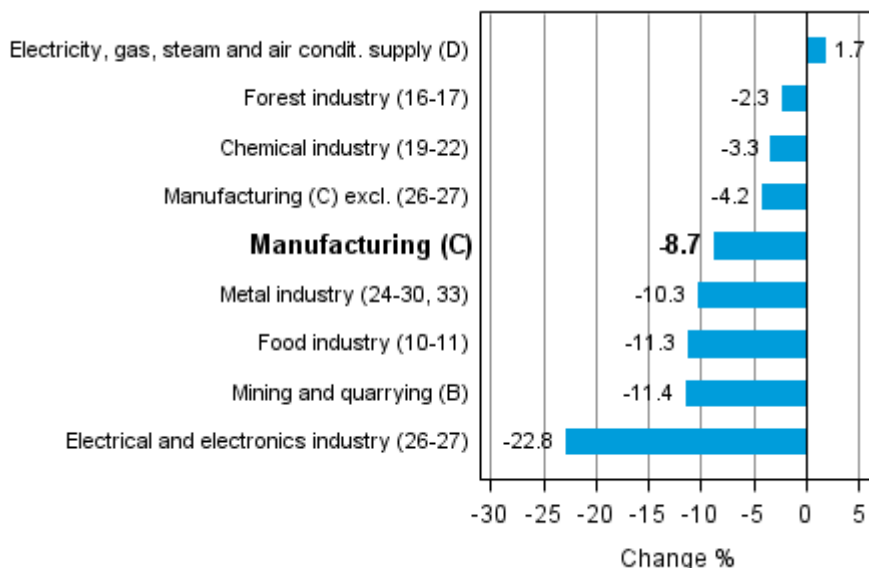
Seasonally adjusted output fell in January by 3.5 per cent compared with the previous month. In December, seasonally adjusted output was 0.4 per cent lower than in November. In November, output increased by 0.1 per cent from the previous month.

**Seasonally adjusted change in total industrial output (BCDE) from previous month, %, TOL 2008**



Industrial output diminished in almost all main industries in January. Output fell most in the electrical and electronics industry, by 22.8 per cent. In mining and quarrying, output was 11.4 per cent lower than in January 2013. In the chemical industry, output decreased by 3.3 per cent from twelve months back. Among the main industries, growth was only seen in production of electricity, where output increased by 1.7 per cent in January.

**Working day adjusted change in industrial output by industry 1/2013-1/2014, %, TOL 2008**



Capacity utilisation rate in manufacturing (C) was 78.7 per cent in January, or 2.1 percentage points lower than one year earlier. In the forest industry, capacity utilisation rate was 83.6 per cent in January, or 0.7 percentage points lower than in January 2013. In the metal industry, capacity utilisation rate was 77 per cent in January, which was 3.5 percentage points less than one year earlier.

Revised data for January 2014 will be published at 9 am on 10 April 2014 in connection with the release of industrial output data for February 2014. The revision is influenced by the estimation used in the latest release, which concerns the periodic tax return data used for enterprises with fewer than 50 employees. Because of the method used, seasonally adjusted figures for previous months may change even if the original figures do not become revised. The seasonally adjusted figures will also be adjusted for working days.

# Contents

Industrial output decreased by 7.5 per cent year-on-year in January .....	5
---	---

## Tables

Table 1. Volume index of industrial output, value added, original, working day adjusted, seasonally adjusted change percentage.....	6
---	---

## Figures

### Appendix figures

Appendix figure 1. Working day adjusted change percentage of industrial output January 2013 /January 2014, TOL 2008.....	7
Appendix figure 2. Seasonally adjusted change percentage of industrial output December 2013 /January 2014, TOL 2008.....	7
Appendix figure 3. Seasonally adjusted industrial output Finland, Germany, Sweden, France and United Kingdom (BCD) 2000 - 2014, 2010=100, TOL 2008.....	8

Revisions in these statistics.....	9
------------------------------------	---

## ***Industrial output decreased by 7.5 per cent year-on-year in January***

According to Statistics Finland, output of total industries adjusted for working days was 7.5 per cent lower in January 2014 than in January 2013. Seasonally adjusted output fell in January by 3.5 per cent compared with December.

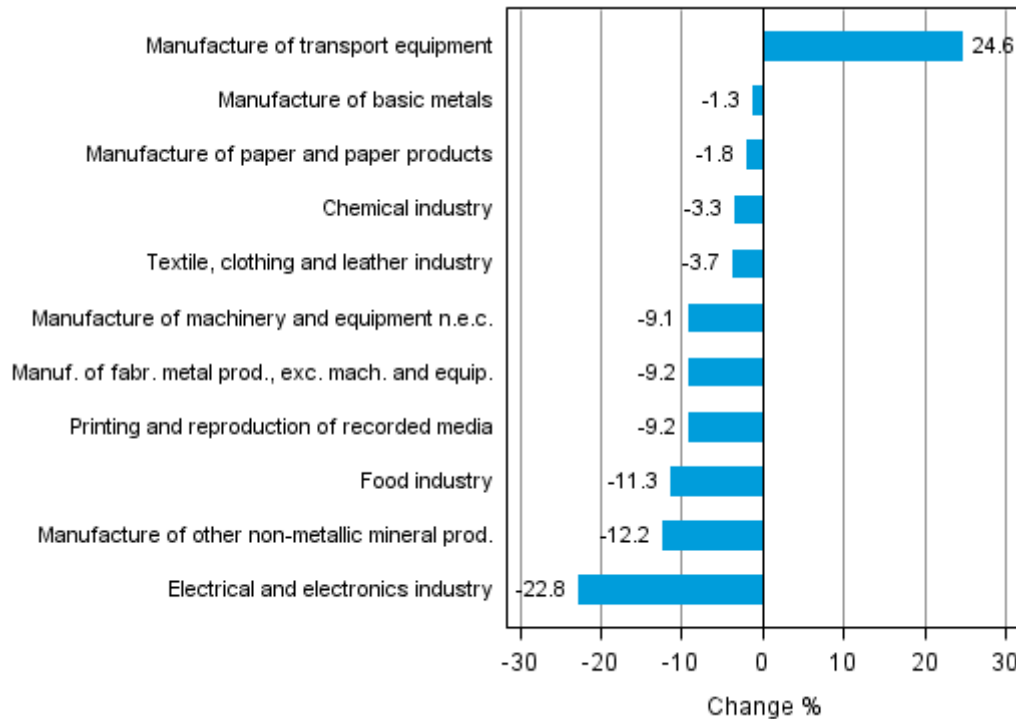
Adjusted for working days, industrial output (C) decreased by 8.7 per cent in January from one year back. Seasonally adjusted output fell in January by 4.6 per cent compared with the previous month.

**Table 1. Volume index of industrial output, value added, original, working day adjusted, seasonally adjusted change percentage**

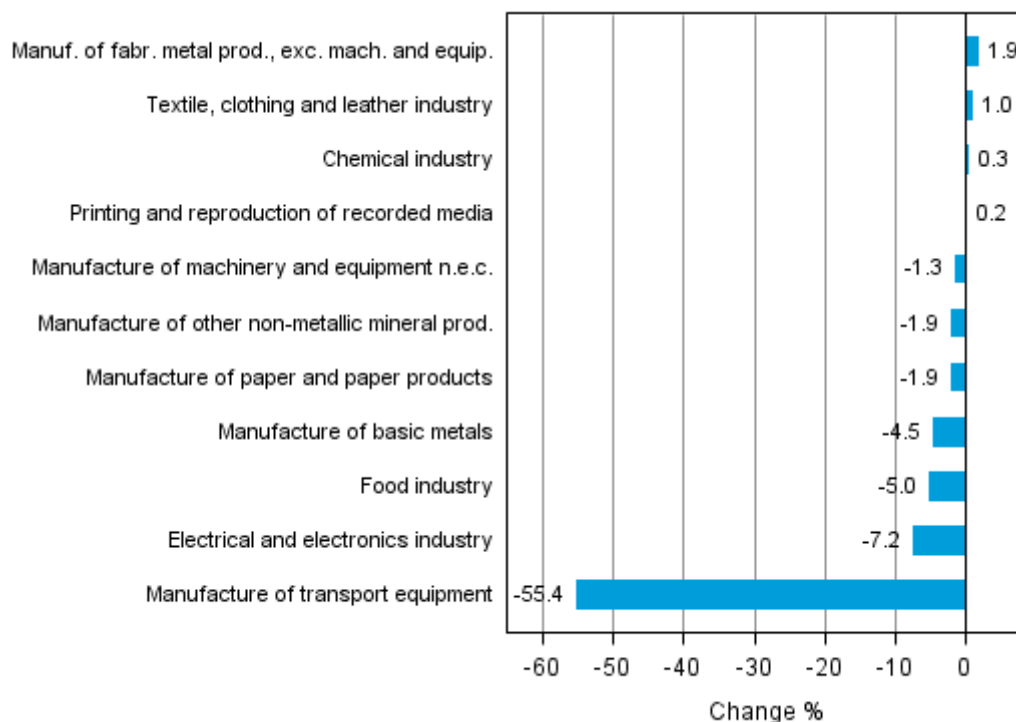
	Value added share	Original change percentage, 2014 JAN / 2013 JAN	Working day adj. change percentage, 2014 JAN / 2013 JAN	Seasonal adj. change percentage, 2014 JAN / 2013 DEC
Industry (Tol 2008)				
Total industries	100,0	-6,2	-7,5	-3,5
B Mining and quarrying	2,0	-6,7	-11,4	-6,0
C Manufacturing	83,9	-7,7	-8,7	-4,6
10 Manufacture of food products	7,1	-11,0	-11,7	-0,7
11 Manufacture of beverages	1,3	-11,5	-7,1	-12,0
13 Manufacture of textiles	0,6	-10,0	-10,1	-2,3
14 Manufacture of wearing apparel	0,4	1,5	1,5	6,8
15 Manufacture of leather and related products	0,3	-15,3	-15,3	-1,5
16 Manufacture of wood and of products of wood and cork, except furniture; manufacture of articles of straw and plaiting materials	3,7	-6,5	-6,6	-6,1
17 Manufacture of paper and paper products	9,5	-1,8	-1,8	-1,9
18 Printing and reproduction of recorded media	1,9	-7,8	-9,2	0,2
23 Manufacture of other non-metallic mineral products	3,7	-12,2	-12,2	-1,9
24 Manufacture of basic metals	3,4	3,5	-1,3	-4,5
25 Manufacture of fabricated metal products, except machinery and equipment	8,2	-9,2	-9,2	1,9
28 Manufacture of machinery and equipment n.e.c.	13,3	-9,3	-9,1	-1,3
29 Manufacture of motor vehicles, trailers and semi-trailers	1,4	-3,8	-3,8	-75,9
30 Manufacture of other transport equipment	1,5	45,8	45,8	-2,1
31 Manufacture of furniture	1,2	-9,2	-9,2	-0,2
32 Other manufacturing	0,9	-36,7	-34,7	3,3
33 Repair and installation of machinery and equipment	3,3	-17,1	-16,1	-4,9
D Electricity, gas, steam and air conditioning supply	10,7	1,6	1,7	9,2
E Water supply; sewerage, waste management and remediation activities	3,4	-1,4	-0,5	0,1
36 Water collection, treatment and supply	1,8	-0,8	-0,8	1,2
Main industrial groupings:				
Raw materials and productive goods	40,4	-5,1	-6,0	-3,9
Investment goods	26,3	-11,2	-14,3	-8,3
Durable goods	1,6	-13,1	-11,6	-1,9
Other consumer goods	14,8	-10,0	-10,0	-1,4
Special indices:				
10-11 Food industry	8,4	-11,1	-11,3	-5,0
13-15 Textile, clothing and leather industry	1,3	-8,4	-3,7	1,0
16-17 Forest industry	13,3	-3,0	-2,3	-3,0
19-22 Chemical industry	13,7	-3,3	-3,3	0,3
24-30 Metal industry	36,2	-8,3	-9,8	-7,2
26-27 Electrical and electronics industry	8,5	-19,0	-22,8	-7,2
25,28-30,33 Machinery and metal product industry	27,6	-7,1	-8,9	-17,1
29-30 Manufacture of transport equipment	2,8	20,5	24,6	-55,4

## Appendix figures

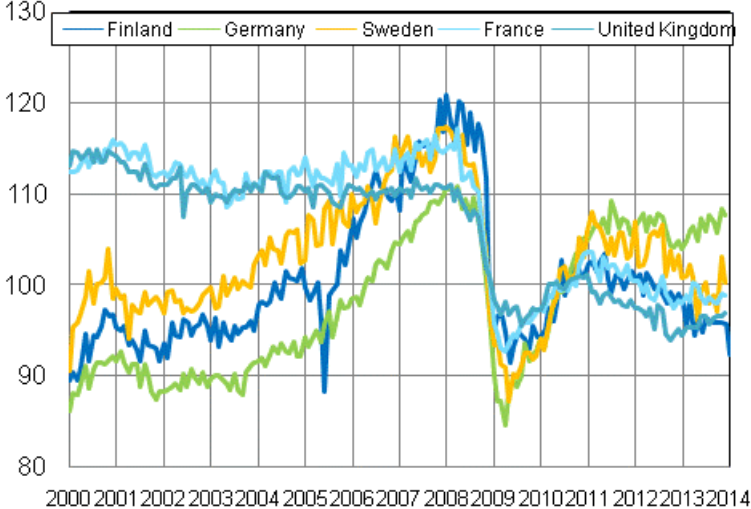
**Appendix figure 1. Working day adjusted change percentage of industrial output January 2013 /January 2014, TOL 2008**



**Appendix figure 2. Seasonally adjusted change percentage of industrial output December 2013 /January 2014, TOL 2008**



**Appendix figure 3. Seasonally adjusted industrial output Finland, Germany, Sweden, France and United Kingdom (BCD) 2000 - 2014, 2010=100, TOL 2008**





## Revisions in these statistics

The data of the original series of industrial output have become revised according to the table below. For more information about data revisions, see Section 3 of the quality description (only in Finnish).

### Revisions to data on annual changes in main industries

Main industries and Statistical reference month		Annual change (%)		Revision (%-point)
		1st release (%)	Latest release (10.03.2014) (%)	
BCDE Total industry	2013 / 08	-2,7	-3,7	-1,0
	2013 / 09	-2,0	-1,2	0,8
	2013 / 10	-2,3	-1,7	0,6
	2013 / 11	-2,1	-2,8	-0,7
	2013 / 12	-2,1	0,9	3,0
C Manufacturing	2013 / 08	-6,0	-5,9	0,1
	2013 / 09	-2,8	-1,5	1,3
	2013 / 10	-2,5	-1,6	0,9
	2013 / 11	-2,5	-3,0	-0,5
	2013 / 12	0,3	3,6	3,3
D Electricity, gas, steam and air conditioning supply	2013 / 08	2,3	2,5	0,2
	2013 / 09	0,5	0,5	0,0
	2013 / 10	-2,3	-2,3	0,0
	2013 / 11	-1,6	-1,8	-0,2
	2013 / 12	-11,4	-11,4	0,0
10-11 Food industry	2013 / 08	-4,1	-3,5	0,6
	2013 / 09	-1,9	-1,1	0,8
	2013 / 10	0,8	0,8	0,0
	2013 / 11	-3,6	-3,4	0,2
	2013 / 12	7,2	6,7	-0,5
16-17 Forest industry	2013 / 08	-3,7	-4,1	-0,4
	2013 / 09	1,3	2,4	1,1
	2013 / 10	2,7	2,6	-0,1
	2013 / 11	-3,3	-2,9	0,4
	2013 / 12	7,2	7,7	0,5
19-22 Chemical industry	2013 / 08	-5,2	-5,7	-0,5
	2013 / 09	14,8	17,5	2,7
	2013 / 10	4,3	3,9	-0,4
	2013 / 11	-3,5	-4,4	-0,9
	2013 / 12	-3,6	-5,7	-2,1
24-30, 33 Metal industry	2013 / 08	-5,3	-4,7	0,6
	2013 / 09	-8,2	-7,7	0,5
	2013 / 10	-4,9	-3,2	1,7
	2013 / 11	-1,0	-0,4	0,6
	2013 / 12	-0,3	6,5	6,8
26-27 Electrical and electronics industry	2013 / 08	-17,1	-17,5	-0,4
	2013 / 09	-18,8	-11,1	7,7
	2013 / 10	-13,9	-13,0	0,9
	2013 / 11	-11,2	-15,1	-3,9
	2013 / 12	-16,0	-9,9	6,1

Main industries and Statistical reference month		Annual change (%)		Revision (%-point)
		1st release (%)	Latest release (10.03.2014) (%)	
Manufacturing excl. electrical and electronics industry	2013 / 08	-4,6	-4,7	-0,1
	2013 / 09	-0,6	-0,4	0,2
	2013 / 10	-1,0	-0,4	0,6
	2013 / 11	-1,3	-1,7	-0,4
	2013 / 12	2,9	5,1	2,2

### Inquiries

Kari Rautio 09 1734 2479

Salla Simola 09 1734 3308

Director in charge:

Hannele Orjala

[volyymi.indeksi@stat.fi](mailto:volyymi.indeksi@stat.fi)

[www.stat.fi](http://www.stat.fi)

Source: Volume Index of Industrial Output 2014, January. Statistics Finland