

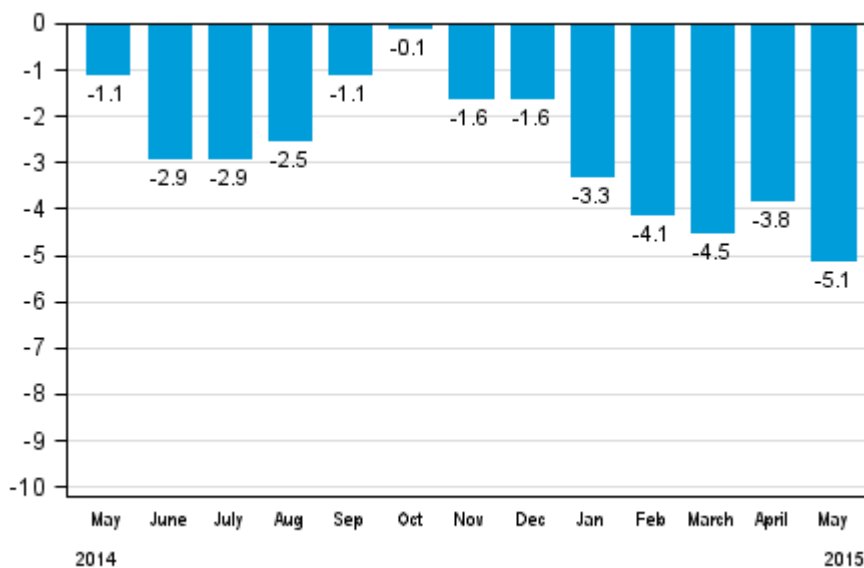
Volume index of industrial output

2015, May

Industrial output decreased by 5.1 per cent year-on-year in May

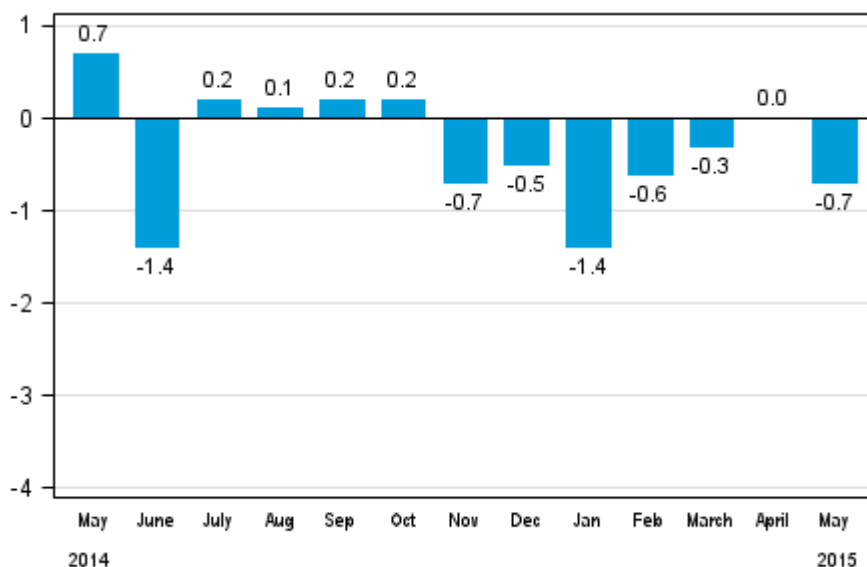
According to Statistics Finland, output of total industries adjusted for working days was 5.1 per cent lower in May 2015 than twelve months earlier. During January to May, industrial output declined by 4.7 per cent year-on-year.

Working day adjusted change in total industrial output (BCDE) from corresponding month previous year, %, TOL 2008



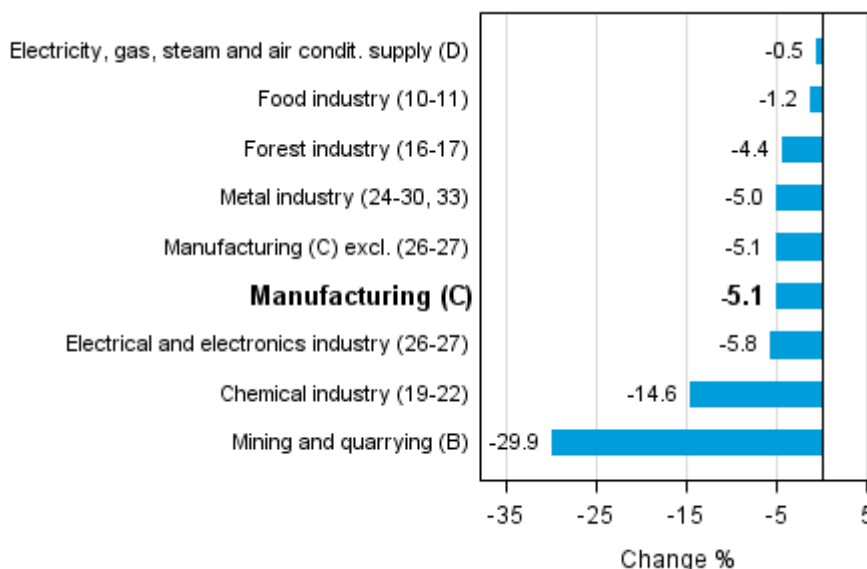
In May, seasonally adjusted output went down by 0.7 per cent from April. In April, seasonally adjusted output remained unchanged compared with March. In March, seasonally adjusted output decreased by 0.3 per cent month-on-month.

Seasonally adjusted change in total industrial output (BCDE) from previous month, %, TOL 2008



Industrial output diminished in all main industries in May. Output declined most, or by nearly 30 per cent, in mining and quarrying. Output in the metal industry fell by five per cent. In the chemical industry, output went down by 14.6 per cent in May from one year ago. Part of the drop is due to a service stoppage in oil refining.

Working day adjusted change in industrial output by industry 5/2014-5/2015, %, TOL 2008



In May, capacity utilisation rate in manufacturing (C) was 79.9 per cent, or 1.1 percentage points lower than one year earlier. In the forest industry, capacity utilisation rate was 89.3 per cent in May, or 1.7 percentage points higher than in May 2014. In the metal industry, capacity utilisation rate was 80.1 per cent in May, which was 0.6 percentage points lower than one year earlier.

Revised data for May 2015 will be published at 9 am on 10 August 2015 in connection with the release of industrial output data for June 2015. The revision is influenced by the estimation used in the latest release, which concerns the periodic tax return data used for enterprises with fewer than 50 employees. Because of the method used, seasonally adjusted figures for previous months may change even if the original figures do not become revised. The seasonally adjusted figures will also be adjusted for working days.

Contents

Industrial output decreased by 5.1 per cent year-on-year in May	5
---	---

Tables

Table 1. Volume index of industrial output, value added, original, working day adjusted, seasonally adjusted change percentage.....	6
---	---

Figures

Appendix figures

Appendix figure 1. Working day adjusted change percentage of industrial output May 2014 /May 2015, TOL 2008.....	7
Appendix figure 2. Seasonally adjusted change percentage of industrial output April 2015 /May 2015, TOL 2008.	7
Appendix figure 3. Seasonally adjusted industrial output Finland, Germany, Sweden, France and United Kingdom (BCD) 2005 - 2015, 2010=100, TOL 2008.....	8

Revisions in these statistics.....	9
------------------------------------	---

Industrial output decreased by 5.1 per cent year-on-year in May

According to Statistics Finland, output of total industries adjusted for working days was 5.1 per cent lower in May 2015 than twelve months earlier. Seasonally adjusted output fell by 0.7 per cent in May from April.

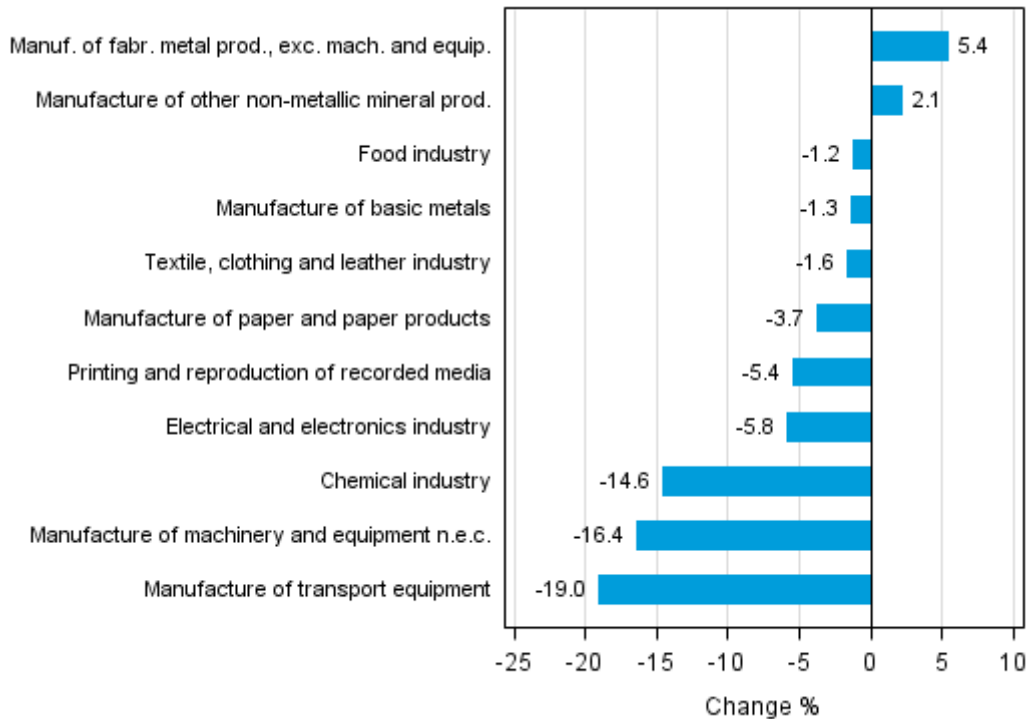
Adjusted for working days, industrial output (C) decreased by 5.1 per cent in May from one year back. Seasonally adjusted output fell by 0.6 per cent in May from April.

Table 1. Volume index of industrial output, value added, original, working day adjusted, seasonally adjusted change percentage

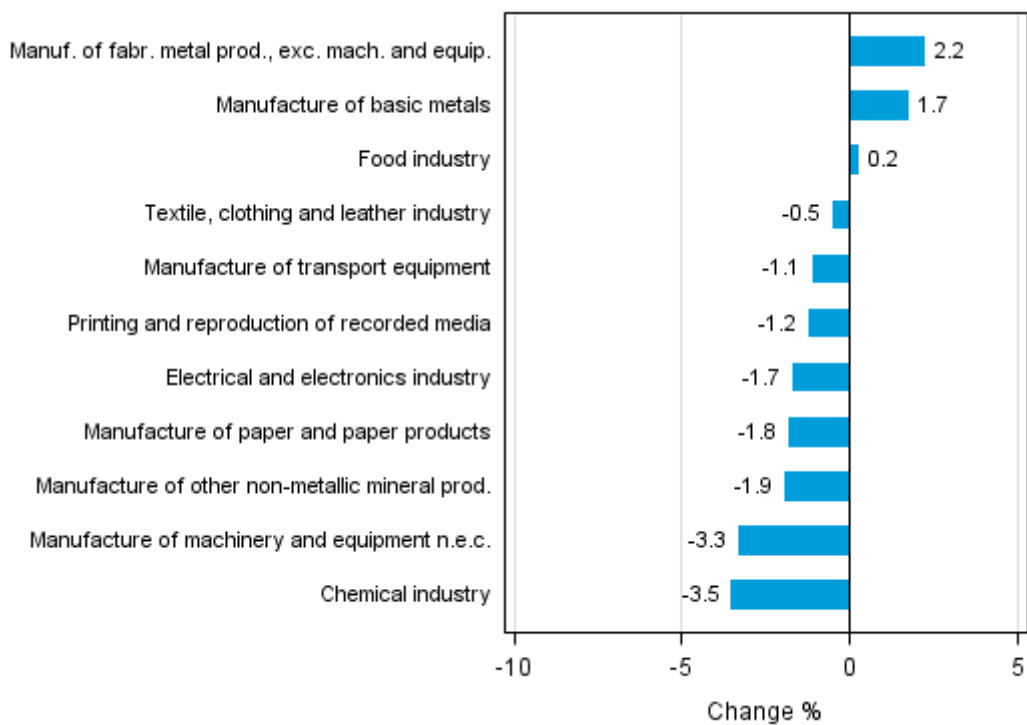
	Value added share	Original change percentage, 2015 MAY / 2014 MAY	Working day adj. change percentage, 2015 MAY / 2014 MAY	Seasonal adj. change percentage, 2015 MAY / 2015 APR
Industry (Tol 2008)				
Total industries	100,0	-7,2	-5,1	-0,7
B Mining and quarrying	1,9	-29,9	-29,9	-19,5
C Manufacturing	85,0	-7,5	-5,1	-0,6
10 Manufacture of food products	7,7	-2,5	1,5	2,0
11 Manufacture of beverages	1,3	-16,2	-14,3	-10,5
13 Manufacture of textiles	0,5	12,9	17,3	-9,5
14 Manufacture of wearing apparel	0,4	-18,5	-15,4	-3,0
15 Manufacture of leather and related products	0,2	-26,7	-26,7	-6,6
16 Manufacture of wood and of products of wood and cork, except furniture; manufacture of articles of straw and plaiting materials	3,6	-9,6	-7,1	-1,9
17 Manufacture of paper and paper products	9,4	-3,7	-3,7	-1,8
18 Printing and reproduction of recorded media	1,8	-8,1	-5,4	-1,2
23 Manufacture of other non-metallic mineral products	3,3	-0,7	2,1	-1,9
24 Manufacture of basic metals	5,6	-3,4	-1,3	1,7
25 Manufacture of fabricated metal products, except machinery and equipment	8,3	1,9	5,4	2,2
28 Manufacture of machinery and equipment n.e.c.	10,9	-19,4	-16,4	-3,3
31 Manufacture of furniture	1,1	-1,9	2,5	1,3
32 Other manufacturing	0,9	9,5	9,5	5,6
33 Repair and installation of machinery and equipment	3,9	10,4	12,7	4,1
D Electricity, gas, steam and air conditioning supply	10,6	-0,5	-0,5	4,1
E Water supply; sewerage, waste management and remediation activities	2,6	-2,7	-2,7	-0,1
36 Water collection, treatment and supply	0,3	-1,6	-1,6	-0,8
Main industrial groupings:				
Raw materials and productive goods	42,2	-3,8	-2,8	-0,5
Investment goods	26,0	-11,9	-9,5	-1,1
Durable goods	1,4	9,3	13,5	1,7
Other consumer goods	15,0	-5,7	-2,7	1,0
Special indices:				
10-11 Food industry	9,0	-4,8	-1,2	0,2
13-15 Textile, clothing and leather industry	1,1	-5,1	-1,6	-0,5
16-17 Forest industry	13,0	-5,4	-4,4	-2,1
19-22 Chemical industry	13,4	-14,6	-14,6	-3,5
24-30 Metal industry	37,6	-9,4	-6,8	-1,2
26-27 Electrical and electronics industry	10,3	-8,7	-5,8	-1,7
25,28-30,33 Machinery and metal product industry	25,6	-8,1	-4,6	-0,0
29-30 Manufacture of transport equipment	2,6	-19,0	-19,0	-1,1

Appendix figures

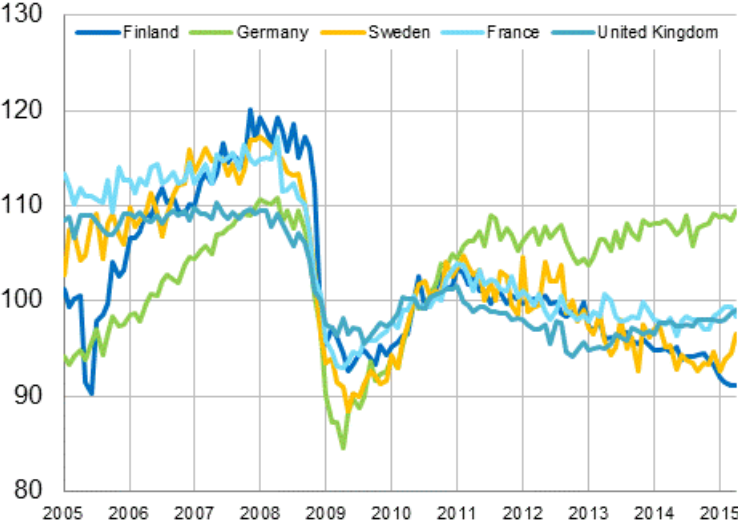
Appendix figure 1. Working day adjusted change percentage of industrial output May 2014 /May 2015, TOL 2008



Appendix figure 2. Seasonally adjusted change percentage of industrial output April 2015 /May 2015, TOL 2008



Appendix figure 3. Seasonally adjusted industrial output Finland, Germany, Sweden, France and United Kingdom (BCD) 2005 - 2015, 2010=100, TOL 2008



Revisions in these statistics

The data of the original series of industrial output have become revised according to the table below. For more information about data revisions, see Section 3 of the quality description (only in Finnish).

Revisions to data on annual changes in main industries

Main industries and Statistical reference month		Annual change (%)		Revision (%-point)
		1st release (%)	Latest release (10.07.2015) (%)	
BCDE Total industry	2014 / 12	3,6	3,2	-0,4
	2015 / 01	-7,2	-6,4	0,8
	2015 / 02	-5,1	-4,1	1,0
	2015 / 03	-2,1	-2,1	0,0
	2015 / 04	-4,2	-4,0	0,2
C Manufacturing	2014 / 12	4,4	3,7	-0,7
	2015 / 01	-6,4	-5,6	0,8
	2015 / 02	-4,8	-3,8	1,0
	2015 / 03	-2,3	-2,5	-0,2
	2015 / 04	-4,9	-4,6	0,3
D Electricity, gas, steam and air conditioning supply	2014 / 12	-1,4	-1,4	0,0
	2015 / 01	-10,5	-10,5	0,0
	2015 / 02	-5,3	-5,3	0,0
	2015 / 03	3,3	3,3	0,0
	2015 / 04	4,1	4,1	0,0
10-11 Food industry	2014 / 12	1,9	4,8	2,9
	2015 / 01	-9,4	-8,2	1,2
	2015 / 02	-4,6	-3,5	1,1
	2015 / 03	-0,1	1,6	1,7
	2015 / 04	-5,4	-6,9	-1,5
16-17 Forest industry	2014 / 12	0,8	1,8	1,0
	2015 / 01	-1,9	-2,9	-1,0
	2015 / 02	-5,3	-3,3	2,0
	2015 / 03	-2,8	-2,7	0,1
	2015 / 04	-1,5	-1,2	0,3
19-22 Chemical industry	2014 / 12	9,8	9,7	-0,1
	2015 / 01	-8,5	-5,0	3,5
	2015 / 02	-5,3	-2,9	2,4
	2015 / 03	-1,0	0,7	1,7
	2015 / 04	-9,7	-7,0	2,7
24-30, 33 Metal industry	2014 / 12	5,7	3,3	-2,4
	2015 / 01	-5,1	-4,7	0,4
	2015 / 02	-4,7	-4,0	0,7
	2015 / 03	-3,8	-5,1	-1,3
	2015 / 04	-4,3	-3,6	0,7
26-27 Electrical and electronics industry	2014 / 12	6,5	-0,8	-7,3
	2015 / 01	3,6	2,0	-1,6
	2015 / 02	-5,6	-4,3	1,3
	2015 / 03	-0,5	0,3	0,8
	2015 / 04	1,4	2,0	0,6

Main industries and Statistical reference month		Annual change (%)		Revision (%-point)
		1st release (%)	Latest release (10.07.2015) (%)	
Manufacturing excl. electrical and electronics industry	2014 / 12	4,1	4,4	0,3
	2015 / 01	-7,5	-6,6	0,9
	2015 / 02	-4,7	-3,7	1,0
	2015 / 03	-2,6	-2,8	-0,2
	2015 / 04	-5,7	-5,4	0,3

Inquiries

Kari Rautio 029 551 2479
Heidi Myllylä 029 551 3792
Director in charge:
Hannele Orjala

volyymi.indeksi@stat.fi
www.stat.fi

Source: Volume Index of Industrial Output 2015, May. Statistics Finland