

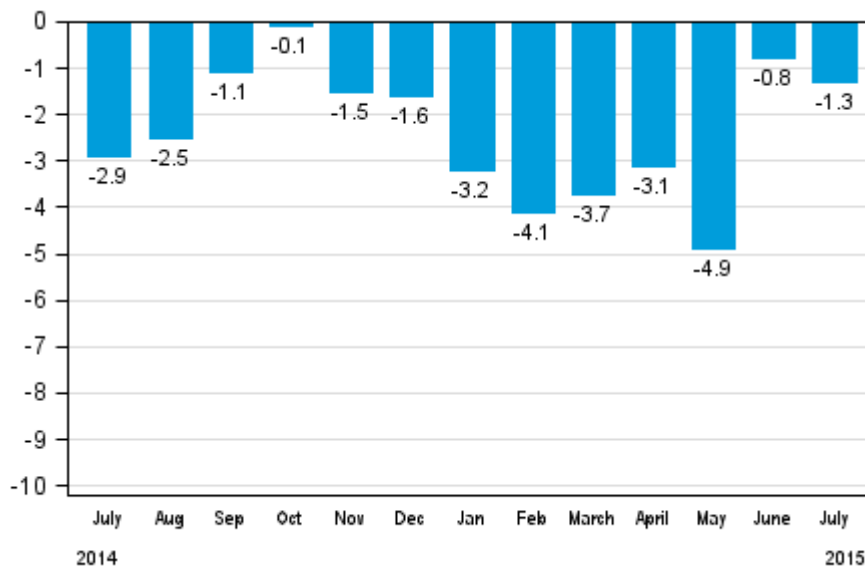
Volume index of industrial output

2015, July

Industrial output decreased by 1.3 per cent year-on-year in July

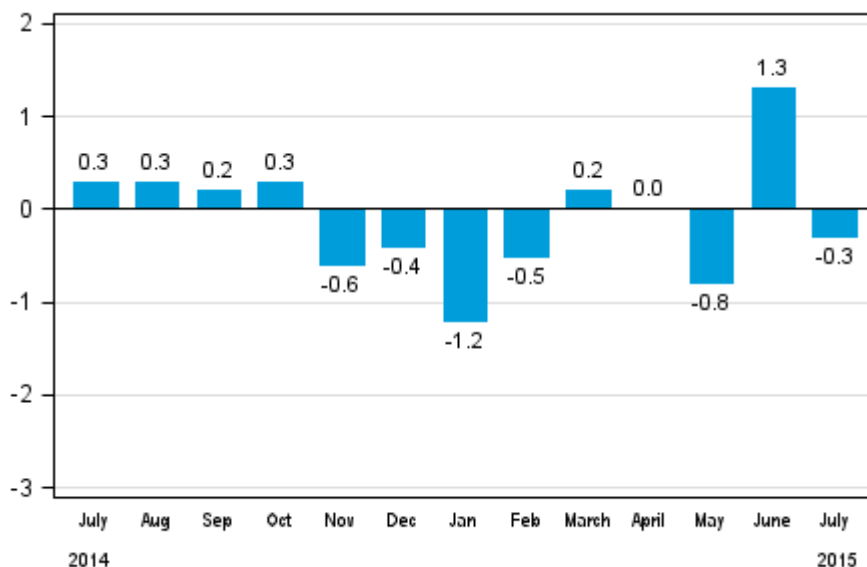
According to Statistics Finland, output of total industries adjusted for working days was 1.3 per cent lower in July 2015 than in July 2014. During January to July, industrial output declined by three per cent year-on-year. Industrial output adjusted for working days has decreased continuously year-on-year since January 2013.

Working day adjusted change in total industrial output (BCDE) from corresponding month previous year, %, TOL 2008



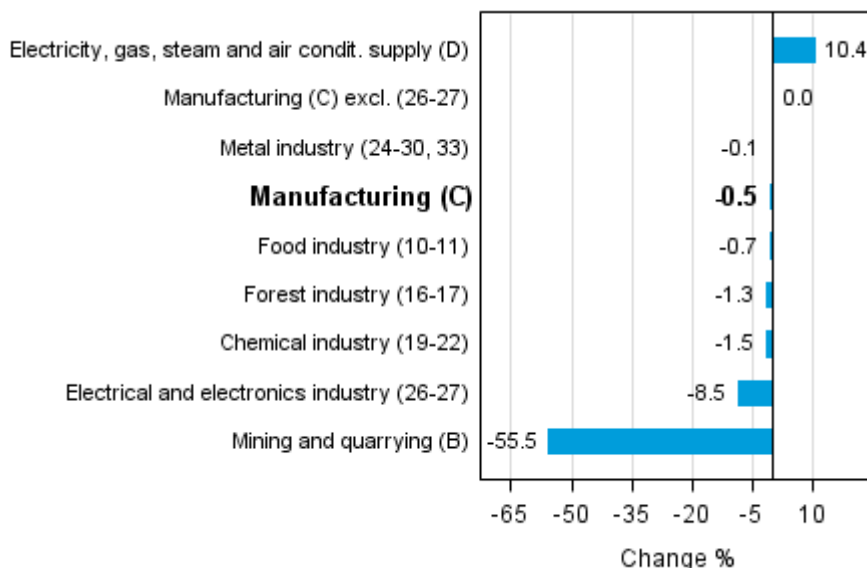
Seasonally adjusted output fell in July by 0.3 per cent compared with the previous month. In June, seasonally adjusted output grew by 1.3 per cent from May. In May, seasonally adjusted output decreased by 0.8 per cent month-on-month.

Seasonally adjusted change in total industrial output (BCDE) from previous month, %, TOL 2008



Industrial output diminished in most main industries in July. Output declined most, or by good 55 per cent, in mining and quarrying. This was mainly caused by a rainy early summer that made peat production difficult. Output in the electrical and electronics industry decreased by 8.5 per cent. In the chemical industry, output diminished by 1.5 per cent. In the metal industry, output diminished by 0.1 per cent in July from one year ago.

Working day adjusted change in industrial output by industry 7/2014-7/2015, %, TOL 2008



In July, capacity utilisation rate in manufacturing (C) was 74 per cent, or 0.1 percentage points lower than one year earlier. In the forest industry, capacity utilisation rate was 83.8 per cent in July, or 4.2 percentage points higher than in July 2014. In the metal industry, capacity utilisation rate was 72.8 per cent in July, i.e. on level with one year before.

Revised data for July 2015 will be published at 9 am on 9 October 2015 in connection with the release of industrial output data for August 2015. The revision is influenced by the estimation used in the latest release, which concerns the periodic tax return data used for enterprises with fewer than 50 employees. Because of the method used, seasonally adjusted figures for previous months may change even if the original figures do not become revised. The seasonally adjusted figures will also be adjusted for working days.

Contents

Industrial output decreased by 1.3 per cent year-on-year in July5

Tables

Table 1. Volume index of industrial output, value added, original, working day adjusted, seasonally adjusted change percentage.....6

Figures

Appendix figures

Appendix figure 1. Working day adjusted change percentage of industrial output July 2014 /July 2015, TOL 2008.7

Appendix figure 2. Seasonally adjusted change percentage of industrial output June 2015 /July 2015, TOL 2008...7

Appendix figure 3. Seasonally adjusted industrial output Finland, Germany, Sweden, France and United Kingdom (BCD) 2005 - 2015, 2010=100, TOL 2008.....8

Revisions in these statistics.....9

Industrial output decreased by 1.3 per cent year-on-year in July

According to Statistics Finland, output of total industries adjusted for working days was 1.3 per cent lower in July 2015 than in July 2014. Seasonally adjusted output fell by 0.3 per cent in July from June.

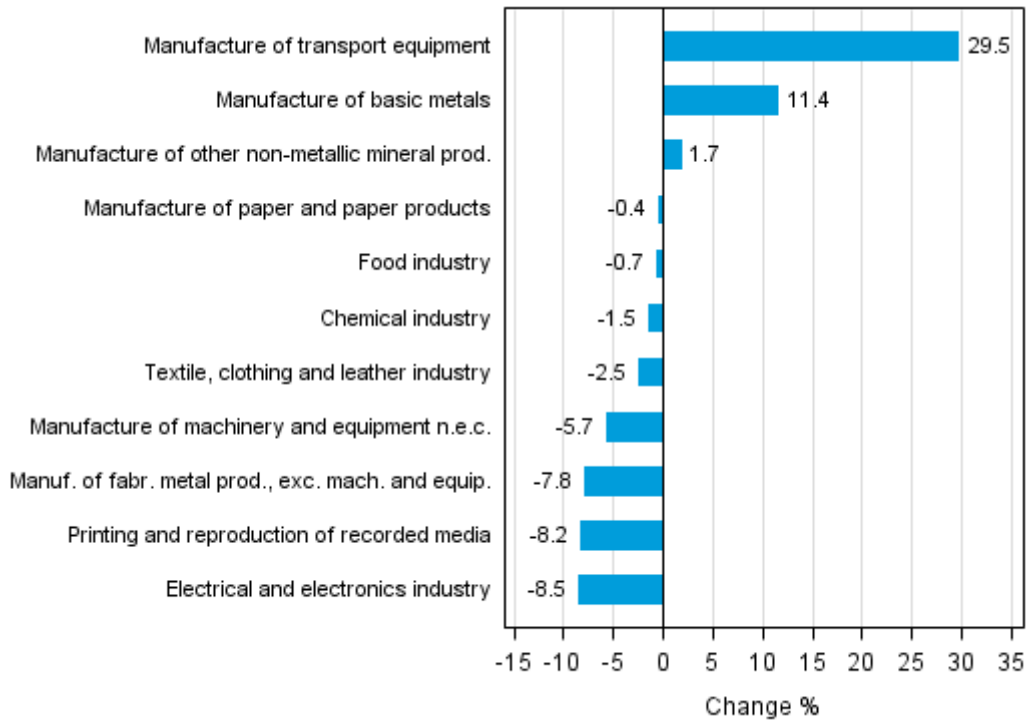
Adjusted for working days, industrial output (C) was 0.5 per cent lower than one year ago in July. In July, seasonally adjusted output was at the same level as in June.

Table 1. Volume index of industrial output, value added, original, working day adjusted, seasonally adjusted change percentage

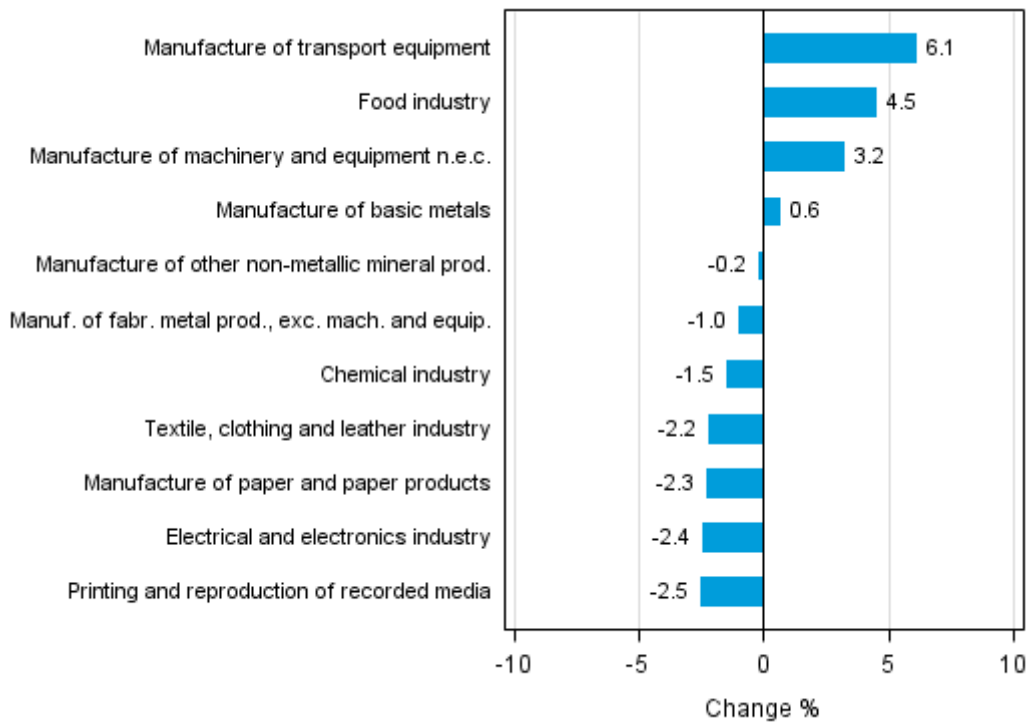
	Value added share	Original change percentage, 2015 JUL / 2014 JUL	Working day adj. change percentage, 2015 JUL / 2014 JUL	Seasonal adj. change percentage, 2015 JUL / 2015 JUN
Industry (Tot 2008)				
Total industries	100,0	-1,9	-1,3	-0,3
B Mining and quarrying	1,9	-55,5	-55,5	-8,8
C Manufacturing	85,0	-0,9	-0,5	0,0
10 Manufacture of food products	7,7	-0,1	-0,5	4,3
11 Manufacture of beverages	1,3	-3,5	-1,6	7,1
13 Manufacture of textiles	0,5	25,0	22,6	-0,7
14 Manufacture of wearing apparel	0,4	-22,9	-22,9	-5,3
15 Manufacture of leather and related products	0,2	-17,6	-17,6	3,6
16 Manufacture of wood and of products of wood and cork, except furniture; manufacture of articles of straw and plaiting materials	3,6	-4,0	-2,7	-0,3
17 Manufacture of paper and paper products	9,4	-0,4	-0,4	-2,3
18 Printing and reproduction of recorded media	1,8	-8,2	-8,2	-2,5
23 Manufacture of other non-metallic mineral products	3,3	0,9	1,7	-0,2
24 Manufacture of basic metals	5,6	12,5	11,4	0,6
25 Manufacture of fabricated metal products, except machinery and equipment	8,3	-7,4	-7,8	-1,0
28 Manufacture of machinery and equipment n.e.c.	10,9	-4,5	-5,7	3,2
31 Manufacture of furniture	1,1	-7,6	-7,6	1,5
32 Other manufacturing	0,9	7,2	7,2	-2,7
33 Repair and installation of machinery and equipment	3,9	17,1	17,1	-1,6
D Electricity, gas, steam and air conditioning supply	10,6	10,4	10,4	-1,9
E Water supply; sewerage, waste management and remediation activities	2,6	0,7	0,7	0,2
36 Water collection, treatment and supply	0,3	-4,0	-4,0	0,6
Main industrial groupings:				
Raw materials and productive goods	42,2	-3,9	-3,3	-1,3
Investment goods	26,0	-2,5	-2,5	-0,7
Durable goods	1,4	8,7	10,2	3,7
Other consumer goods	15,0	-2,4	-1,9	-0,5
Special indices:				
10-11 Food industry	9,0	-0,7	-0,7	4,5
13-15 Textile, clothing and leather industry	1,1	-3,4	-2,5	-2,2
16-17 Forest industry	13,0	-1,3	-1,3	-1,8
19-22 Chemical industry	13,4	-1,5	-1,5	-1,5
24-30 Metal industry	37,6	-2,2	-1,9	-0,1
26-27 Electrical and electronics industry	10,3	-8,5	-8,5	-2,4
25,28-30,33 Machinery and metal product industry	25,6	0,2	-0,5	0,6
29-30 Manufacture of transport equipment	2,6	29,5	29,5	6,1

Appendix figures

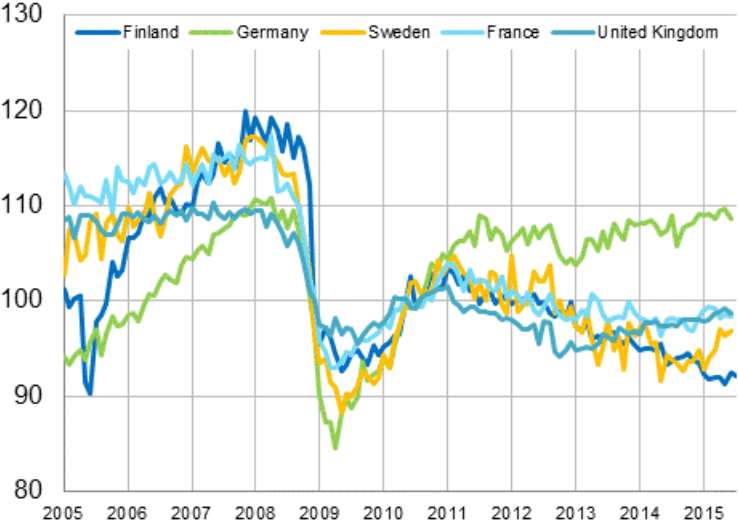
Appendix figure 1. Working day adjusted change percentage of industrial output July 2014 /July 2015, TOL 2008



Appendix figure 2. Seasonally adjusted change percentage of industrial output June 2015 /July 2015, TOL 2008



Appendix figure 3. Seasonally adjusted industrial output Finland, Germany, Sweden, France and United Kingdom (BCD) 2005 - 2015, 2010=100, TOL 2008



Revisions in these statistics

The data of the original series of industrial output have become revised according to the table below. For more information about data revisions, see Section 3 of the quality description (only in Finnish).

Revisions to data on annual changes in main industries

Main industries and Statistical reference month		Annual change (%)		Revision (%-point)
		1st release (%)	Latest release (10.09.2015) (%)	
BCDE Total industry	2015 / 02	-5,1	-4,1	1,0
	2015 / 03	-2,1	-1,2	0,9
	2015 / 04	-4,2	-3,4	0,8
	2015 / 05	-7,2	-7,0	0,2
	2015 / 06	1,7	2,0	0,3
C Manufacturing	2015 / 02	-4,8	-3,8	1,0
	2015 / 03	-2,3	-1,5	0,8
	2015 / 04	-4,9	-3,9	1,0
	2015 / 05	-7,5	-7,3	0,2
	2015 / 06	1,9	2,2	0,3
D Electricity, gas, steam and air conditioning supply	2015 / 02	-5,3	-5,3	0,0
	2015 / 03	3,3	3,3	0,0
	2015 / 04	4,1	4,1	0,0
	2015 / 05	-0,5	-0,5	0,0
	2015 / 06	10,0	10,0	0,0
10-11 Food industry	2015 / 02	-4,6	-3,6	1,0
	2015 / 03	-0,1	1,5	1,6
	2015 / 04	-5,4	-7,0	-1,6
	2015 / 05	-4,8	-5,1	-0,3
	2015 / 06	-4,7	-6,5	-1,8
16-17 Forest industry	2015 / 02	-5,3	-3,3	2,0
	2015 / 03	-2,8	-2,8	0,0
	2015 / 04	-1,5	-1,3	0,2
	2015 / 05	-5,4	-5,6	-0,2
	2015 / 06	1,6	2,2	0,6
19-22 Chemical industry	2015 / 02	-5,3	-2,6	2,7
	2015 / 03	-1,0	7,8	8,8
	2015 / 04	-9,7	-0,8	8,9
	2015 / 05	-14,6	-10,1	4,5
	2015 / 06	4,6	5,3	0,7
24-30, 33 Metal industry	2015 / 02	-4,7	-4,1	0,6
	2015 / 03	-3,8	-5,2	-1,4
	2015 / 04	-4,3	-4,2	0,1
	2015 / 05	-7,6	-7,9	-0,3
	2015 / 06	2,9	3,0	0,1
26-27 Electrical and electronics industry	2015 / 02	-5,6	-4,3	1,3
	2015 / 03	-0,5	0,4	0,9
	2015 / 04	1,4	1,4	0,0
	2015 / 05	-8,7	-10,3	-1,6
	2015 / 06	2,9	1,9	-1,0

Main industries and Statistical reference month		Annual change (%)		Revision (%-point)
		1st release (%)	Latest release (10.09.2015) (%)	
Manufacturing excl. electrical and electronics industry	2015 / 02	-4,7	-3,7	1,0
	2015 / 03	-2,6	-1,7	0,9
	2015 / 04	-5,7	-4,6	1,1
	2015 / 05	-7,4	-6,9	0,5
	2015 / 06	1,8	2,3	0,5

Inquiries

Kari Rautio 029 551 2479

Heidi Myllylä 029 551 3792

Director in charge:

Mari Ylä-Jarkko

volyymi.indeksi@stat.fi

www.stat.fi

Source: Volume Index of Industrial Output 2015, July. Statistics Finland