

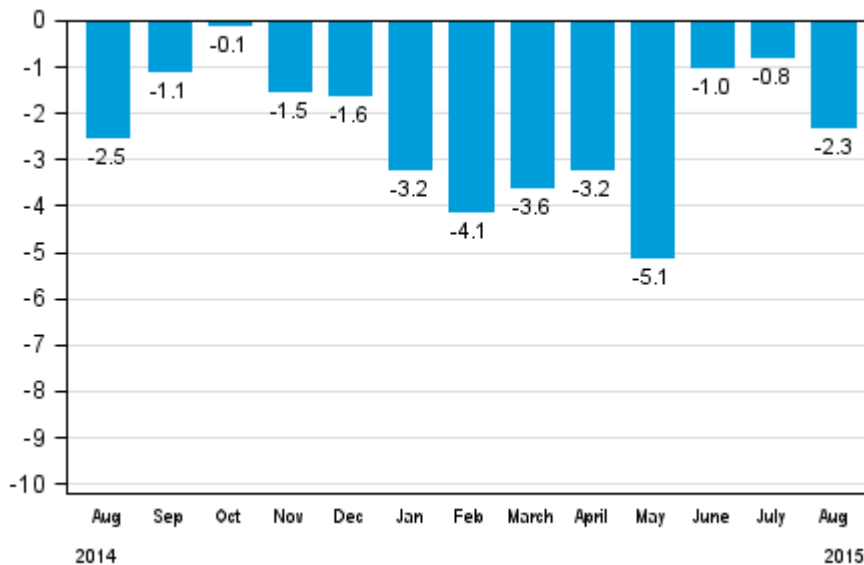
Volume index of industrial output

2015, August

Industrial output decreased by 2.3 per cent year-on-year in August

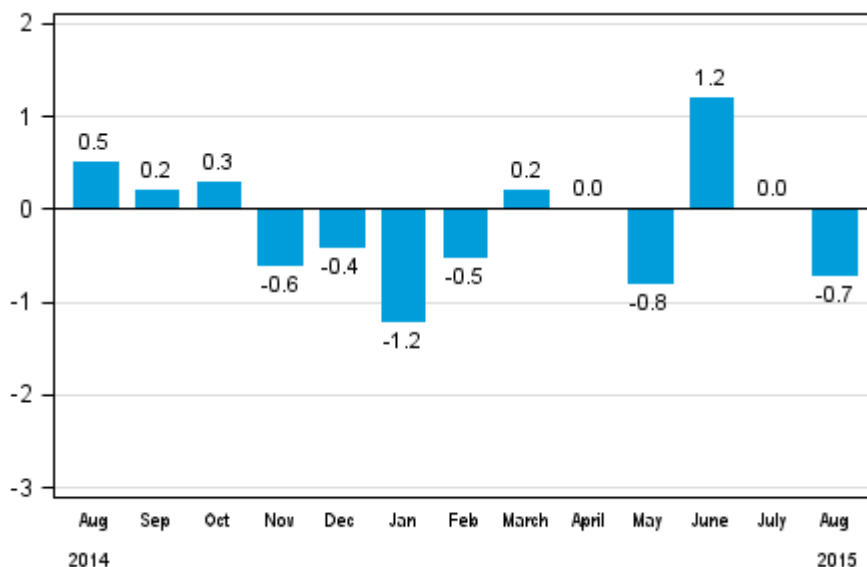
According to Statistics Finland, output of total industries adjusted for working days was 2.3 per cent lower in August 2015 than twelve months earlier. During January to August, industrial output declined by 2.9 per cent year-on-year.

Working day adjusted change in total industrial output (BCDE) from corresponding month previous year, %, TOL 2008



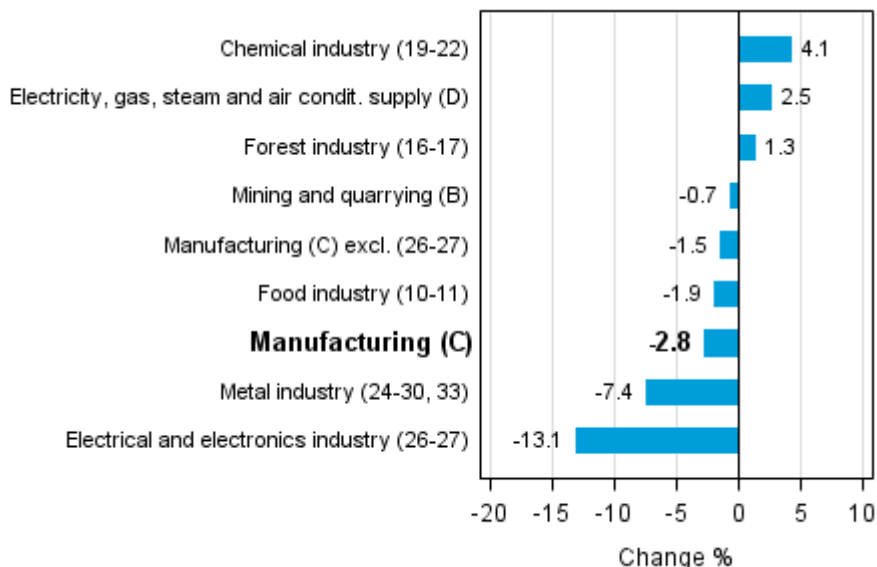
In August, seasonally adjusted output went down by 0.7 per cent from July. In July, seasonally adjusted output was at the same level as in June. In June, seasonally adjusted output increased by 1.2 per cent from the previous month.

Seasonally adjusted change in total industrial output (BCDE) from previous month, %, TOL 2008



Industrial output diminished in several main industries in August. Output fell most in the electrical and electronics industry, by 13.1 per cent. In the metal industry, output was 7.4 per cent down in August on twelve months back. In the chemical industry, output grew by 4.1 per cent. In the forest industry, output increased by 1.3 per cent in August from one year ago.

Working day adjusted change in industrial output by industry 8/2014-8/2015, %, TOL 2008



In August, capacity utilisation rate in manufacturing (C) was 80.5 per cent, or 1.7 percentage points higher than one year earlier. In the forest industry, capacity utilisation rate was 82.6 per cent in August, or 1.2 percentage points lower than in August 2014. In the metal industry, capacity utilisation rate was 81.8 per cent in August, or 4.1 per cent higher than one year earlier.

Revised data for August 2015 will be published at 9 am on 10 November 2015 in connection with the release of industrial output data for September 2015. The revision is influenced by the estimation used in the latest release, which concerns the periodic tax return data used for enterprises with fewer than 50 employees. Because of the method used, seasonally adjusted figures for previous months may change even if the original figures do not become revised. The seasonally adjusted figures will also be adjusted for working days.

Contents

Industrial output decreased by 2.3 per cent year-on-year in August	5
--	---

Tables

Table 1. Volume index of industrial output, value added, original, working day adjusted, seasonally adjusted change percentage.....	6
---	---

Figures

Appendix figures

Appendix figure 1. Working day adjusted change percentage of industrial output August 2014 /August 2015, TOL 2008.....	7
--	---

Appendix figure 2. Seasonally adjusted change percentage of industrial output July 2015 /August 2015, TOL 2008.....	7
---	---

Appendix figure 3. Seasonally adjusted industrial output Finland, Germany, Sweden, France and United Kingdom (BCD) 2005 - 2015, 2010=100, TOL 2008.....	8
---	---

Revisions in these statistics.....	9
------------------------------------	---

Industrial output decreased by 2.3 per cent year-on-year in August

According to Statistics Finland, output of total industries adjusted for working days was 2.3 per cent lower in August 2015 than twelve months earlier. In August, seasonally adjusted output went down by 0.7 per cent from July.

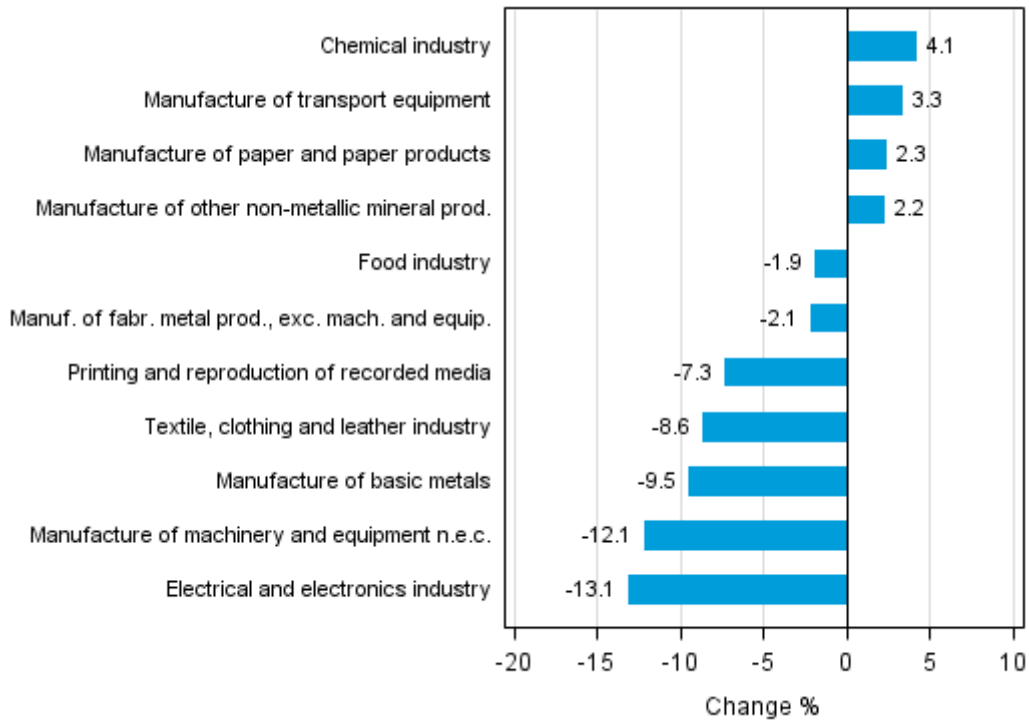
Industrial output (C) adjusted for working days was 2.8 per cent lower in August than twelve months earlier. Seasonally adjusted output was 1.3 per cent lower in August than in July.

Table 1. Volume index of industrial output, value added, original, working day adjusted, seasonally adjusted change percentage

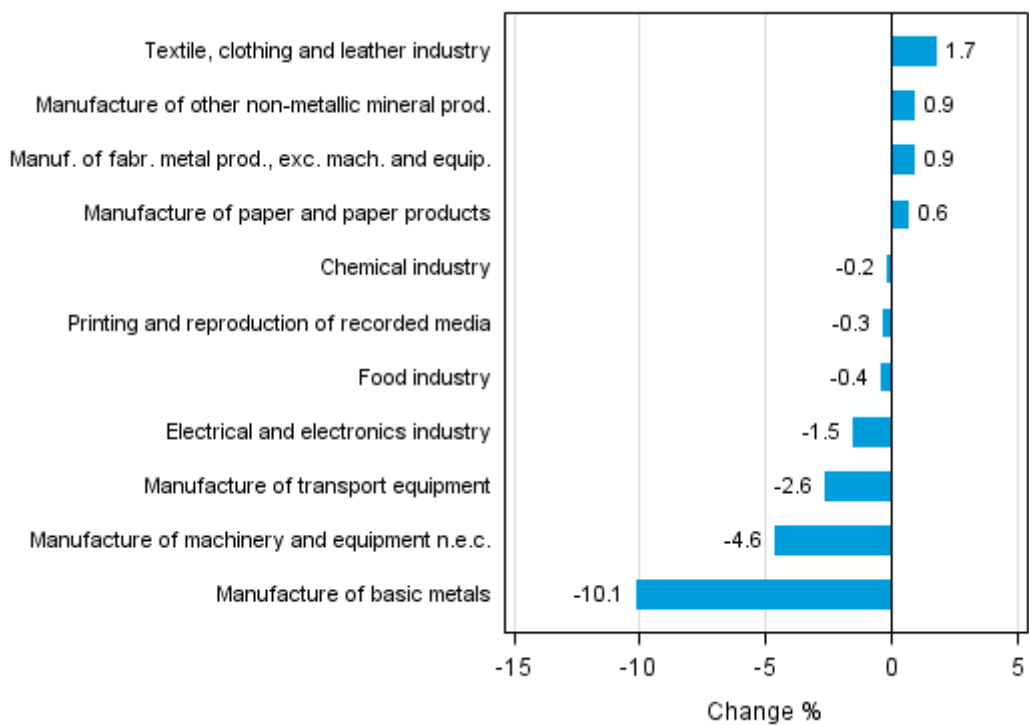
	Value added share	Original change percentage, 2015 AUG / 2014 AUG	Working day adj. change percentage, 2015 AUG / 2014 AUG	Seasonal adj. change percentage, 2015 AUG / 2015 JUL
Industry (Tot 2008)				
Total industries	100,0	-2,8	-2,3	-0,7
B Mining and quarrying	1,9	-0,7	-0,7	48,5
C Manufacturing	85,0	-3,4	-2,8	-1,3
10 Manufacture of food products	7,7	-3,3	-2,6	-0,8
11 Manufacture of beverages	1,3	0,6	1,2	2,4
13 Manufacture of textiles	0,5	-0,9	0,9	-0,4
14 Manufacture of wearing apparel	0,4	-15,5	-15,5	-0,5
15 Manufacture of leather and related products	0,2	-14,7	-14,7	-6,0
16 Manufacture of wood and of products of wood and cork, except furniture; manufacture of articles of straw and plaiting materials	3,6	-1,7	-2,2	0,6
17 Manufacture of paper and paper products	9,4	2,3	2,3	0,6
18 Printing and reproduction of recorded media	1,8	-7,0	-7,3	-0,3
23 Manufacture of other non-metallic mineral products	3,3	2,1	2,2	0,9
24 Manufacture of basic metals	5,6	-11,6	-9,5	-10,1
25 Manufacture of fabricated metal products, except machinery and equipment	8,3	-2,5	-2,1	0,9
28 Manufacture of machinery and equipment n.e.c.	10,9	-14,2	-12,1	-4,6
31 Manufacture of furniture	1,1	5,4	6,4	4,0
32 Other manufacturing	0,9	14,1	14,1	-1,3
33 Repair and installation of machinery and equipment	3,9	10,0	10,0	-1,3
D Electricity, gas, steam and air conditioning supply	10,6	2,5	2,5	-6,3
E Water supply; sewerage, waste management and remediation activities	2,6	0,3	0,3	-0,3
36 Water collection, treatment and supply	0,3	1,8	1,8	2,8
Main industrial groupings:				
Raw materials and productive goods	42,2	-2,1	-2,0	-0,0
Investment goods	26,0	-9,0	-9,0	-2,9
Durable goods	1,4	12,8	13,0	1,5
Other consumer goods	15,0	-0,2	-0,1	0,2
Special indices:				
10-11 Food industry	9,0	-2,7	-1,9	-0,4
13-15 Textile, clothing and leather industry	1,1	-8,2	-8,6	1,7
16-17 Forest industry	13,0	1,3	1,3	0,7
19-22 Chemical industry	13,4	4,1	4,1	-0,2
24-30 Metal industry	37,6	-10,0	-9,3	-3,4
26-27 Electrical and electronics industry	10,3	-13,1	-13,1	-1,5
25,28-30,33 Machinery and metal product industry	25,6	-5,2	-3,7	-1,8
29-30 Manufacture of transport equipment	2,6	3,3	3,3	-2,6

Appendix figures

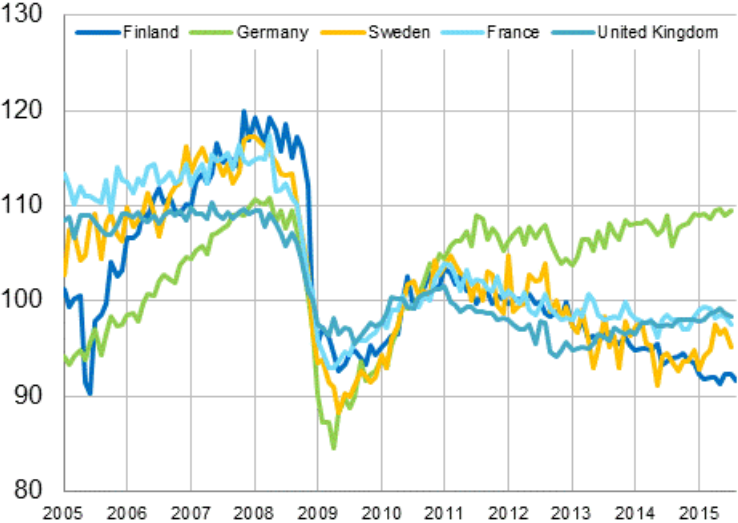
Appendix figure 1. Working day adjusted change percentage of industrial output August 2014 /August 2015, TOL 2008



Appendix figure 2. Seasonally adjusted change percentage of industrial output July 2015 /August 2015, TOL 2008



Appendix figure 3. Seasonally adjusted industrial output Finland, Germany, Sweden, France and United Kingdom (BCD) 2005 - 2015, 2010=100, TOL 2008



Revisions in these statistics

The data of the original series of industrial output have become revised according to the table below. For more information about data revisions, see Section 3 of the quality description (only in Finnish).

Revisions to data on annual changes in main industries

Main industries and Statistical reference month		Annual change (%)		Revision (%-point)
		1st release (%)	Latest release (09.10.2015) (%)	
BCDE Total industry	2015 / 03	-2,1	-1,2	0,9
	2015 / 04	-4,2	-3,5	0,7
	2015 / 05	-7,2	-7,2	0,0
	2015 / 06	1,7	1,8	0,1
	2015 / 07	-1,9	-1,3	0,6
C Manufacturing	2015 / 03	-2,3	-1,4	0,9
	2015 / 04	-4,9	-4,0	0,9
	2015 / 05	-7,5	-7,5	0,0
	2015 / 06	1,9	2,0	0,1
	2015 / 07	-0,9	-0,2	0,7
D Electricity, gas, steam and air conditioning supply	2015 / 03	3,3	3,3	0,0
	2015 / 04	4,1	4,1	0,0
	2015 / 05	-0,5	-0,5	0,0
	2015 / 06	10,0	10,0	0,0
	2015 / 07	10,4	10,4	0,0
10-11 Food industry	2015 / 03	-0,1	1,5	1,6
	2015 / 04	-5,4	-7,1	-1,7
	2015 / 05	-4,8	-5,2	-0,4
	2015 / 06	-4,7	-6,5	-1,8
	2015 / 07	-0,7	-0,7	0,0
16-17 Forest industry	2015 / 03	-2,8	-2,8	0,0
	2015 / 04	-1,5	-1,4	0,1
	2015 / 05	-5,4	-5,7	-0,3
	2015 / 06	1,6	2,1	0,5
	2015 / 07	-1,3	-0,9	0,4
19-22 Chemical industry	2015 / 03	-1,0	7,8	8,8
	2015 / 04	-9,7	-0,8	8,9
	2015 / 05	-14,6	-10,1	4,5
	2015 / 06	4,6	5,3	0,7
	2015 / 07	-1,5	-0,0	1,5
24-30, 33 Metal industry	2015 / 03	-3,8	-5,2	-1,4
	2015 / 04	-4,3	-4,3	0,0
	2015 / 05	-7,6	-8,3	-0,7
	2015 / 06	2,9	2,5	-0,4
	2015 / 07	-0,4	0,1	0,5
26-27 Electrical and electronics industry	2015 / 03	-0,5	0,4	0,9
	2015 / 04	1,4	1,4	0,0
	2015 / 05	-8,7	-10,3	-1,6
	2015 / 06	2,9	0,7	-2,2
	2015 / 07	-8,5	-8,3	0,2

Main industries and Statistical reference month		Annual change (%)		Revision (%-point)
		1st release (%)	Latest release (09.10.2015) (%)	
Manufacturing excl. electrical and electronics industry	2015 / 03	-2,6	-1,7	0,9
	2015 / 04	-5,7	-4,7	1,0
	2015 / 05	-7,4	-7,1	0,3
	2015 / 06	1,8	2,2	0,4
	2015 / 07	0,2	0,9	0,7

Inquiries

Kari Rautio 029 551 2479

Heidi Myllylä 029 551 3792

Director in charge:

Mari Ylä-Jarkko

volyymi.indeksi@stat.fi

www.stat.fi

Source: Volume Index of Industrial Output 2015, August. Statistics Finland