

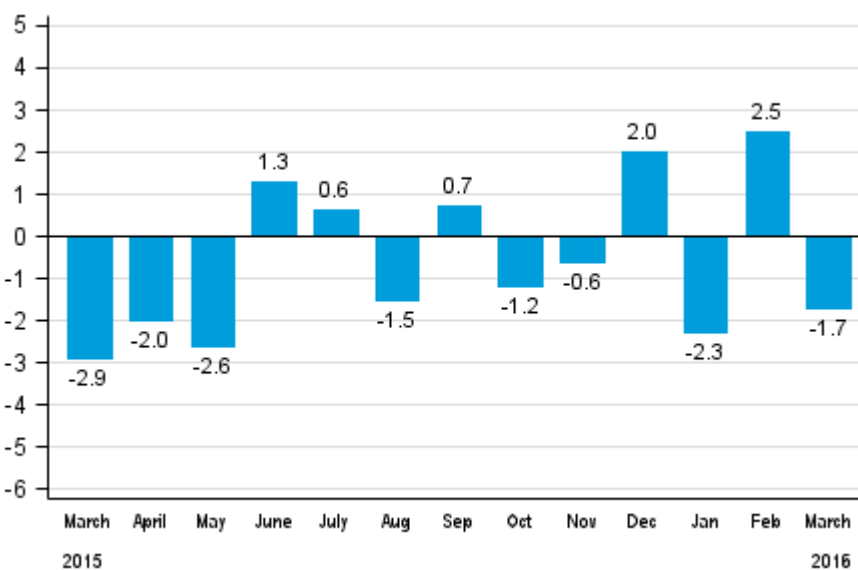
Volume index of industrial output

2016, March

Industrial output decreased by 1.7 per cent year-on-year in March

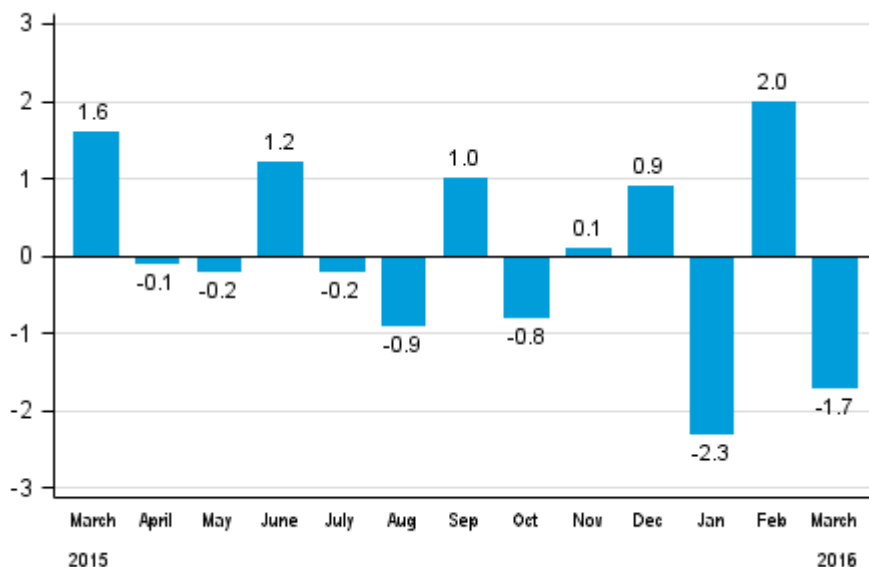
According to Statistics Finland, output of total industries adjusted for working days was 1.7 per cent lower in March 2016 than twelve months earlier. In the January to March period, industrial output adjusted for working days went down by 0.5 per cent from one year ago.

Working day adjusted change in total industrial output (BCDE) from corresponding month previous year, %, TOL 2008



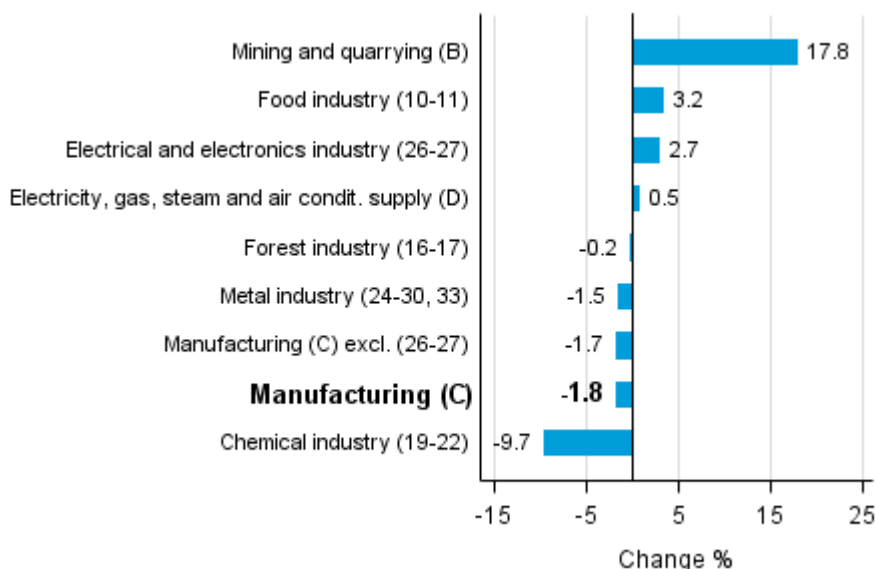
Seasonally adjusted output decreased in March by 1.7 per cent from February. In February, seasonally adjusted output grew by two per cent. In January, seasonally adjusted output decreased by 2.3 per cent month-on-month.

Seasonally adjusted change in total industrial output (BCDE) from previous month, %, TOL 2008



Among the main industries, output grew most in mining and quarrying, by 17.8 per cent. In the food industry, output grew by 3.2 per cent in March. Output declined most, by 9.7 per cent, in the chemical industry. In the metal industry, output decreased by 1.5 per cent in March from twelve months back.

Working day adjusted change in industrial output by industry 3/2015-3/2016, %, TOL 2008



In March, capacity utilisation rate in manufacturing (C) was 81.8 per cent, or 0.2 percentage points higher than one year earlier. In the forest industry, capacity utilisation rate was 90.3 per cent in March, or 2.4 percentage points higher than in March 2015. In the metal industry, capacity utilisation rate was 82.6 per cent in March, which was 0.8 percentage points lower than one year earlier.

Revised data for March 2016 will be published at 9 am on 10 June 2016 in connection with the release of industrial output data for April 2016. The revision is influenced by the estimation used in the latest release,

which concerns the periodic tax return data used for enterprises with fewer than 50 employees. Because of the method used, seasonally adjusted figures for previous months may change even if the original figures do not become revised. The seasonally adjusted figures will also be adjusted for working days.

Contents

Industrial output decreased by 1.7 per cent year-on-year in March	5
---	---

Tables

Table 1. Volume index of industrial output, value added, original, working day adjusted, seasonally adjusted change percentage.....	6
---	---

Figures

Appendix figures

Appendix figure 1. Working day adjusted change percentage of industrial output March 2015 /March 2016, TOL 2008.....	7
--	---

Appendix figure 2. Seasonally adjusted change percentage of industrial output February 2016 /March 2016, TOL 2008.....	7
--	---

Appendix figure 3. Seasonally adjusted industrial output Finland, Germany, Sweden, France and United Kingdom (BCD) 2005 - 2016, 2010=100, TOL 2008.....	8
---	---

Revisions in these statistics.....	9
------------------------------------	---

Industrial output decreased by 1.7 per cent year-on-year in March

According to Statistics Finland, output of total industries adjusted for working days was 1.7 per cent lower in March 2016 than twelve months earlier. Seasonally adjusted output contracted by 1.7 per cent in March from February.

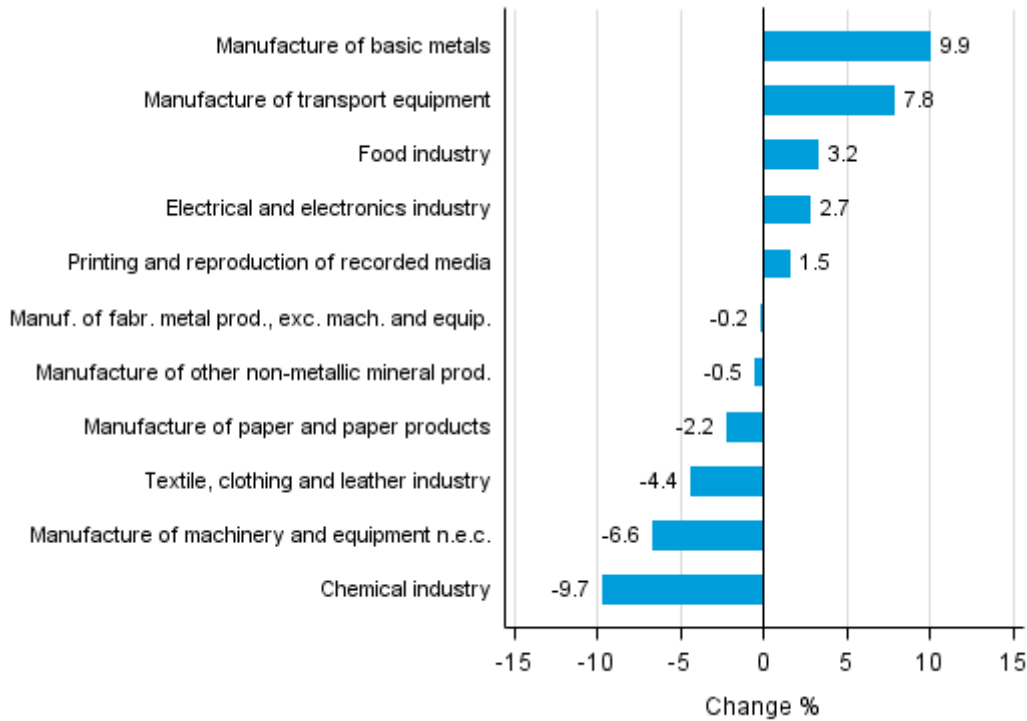
Adjusted for working days, industrial output (C) decreased by 1.8 per cent in March from one year back. Seasonally adjusted output contracted by 1.3 per cent in March from February.

Table 1. Volume index of industrial output, value added, original, working day adjusted, seasonally adjusted change percentage

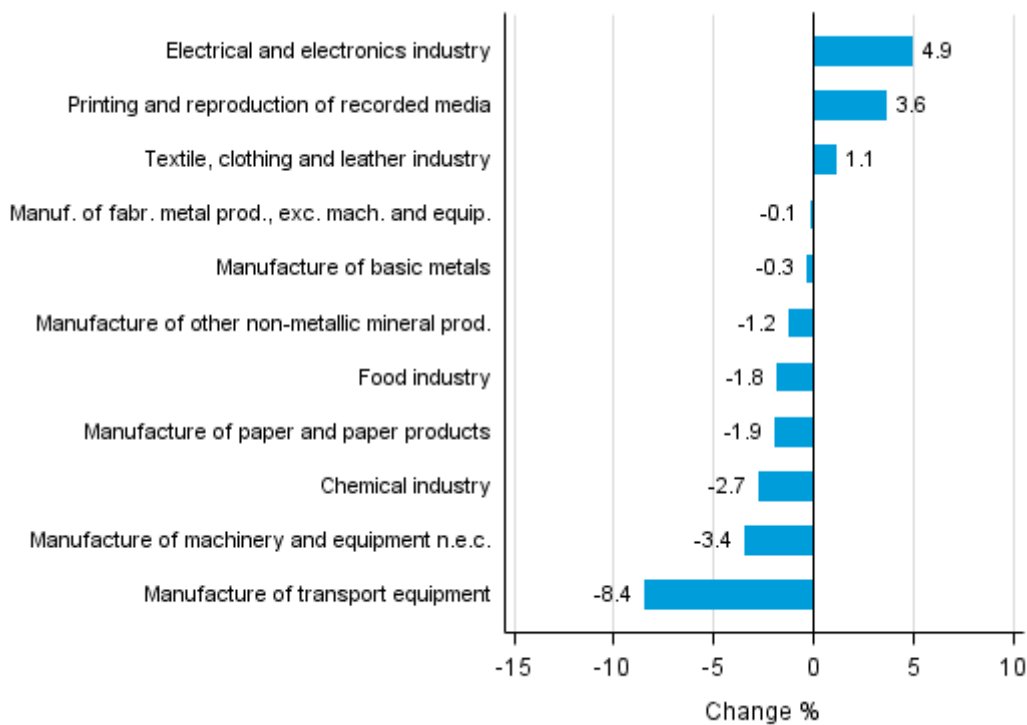
	Value added share	Original change percentage, 2016 MAR / 2015 MAR	Working day adj. change percentage, 2016 MAR / 2015 MAR	Seasonal adj. change percentage, 2016 MAR / 2016 FEB
Industry (Tot 2008)				
Total industries	100,0	-2,6	-1,7	-1,7
B Mining and quarrying	1,0	17,8	17,8	-3,2
C Manufacturing	85,3	-3,1	-1,8	-1,3
10 Manufacture of food products	7,3	1,2	2,4	-0,2
11 Manufacture of beverages	1,2	7,7	7,4	-2,8
13 Manufacture of textiles	0,6	-2,4	0,2	2,2
14 Manufacture of wearing apparel	0,5	-2,6	1,1	3,2
15 Manufacture of leather and related products	0,3	-21,8	-21,8	-8,3
16 Manufacture of wood and of products of wood and cork, except furniture; manufacture of articles of straw and plaiting materials	4,3	0,5	5,0	-1,2
17 Manufacture of paper and paper products	9,1	-2,2	-2,2	-1,9
18 Printing and reproduction of recorded media	1,6	-2,4	1,5	3,6
23 Manufacture of other non-metallic mineral products	3,2	-5,1	-0,5	-1,2
24 Manufacture of basic metals	5,0	8,1	9,9	-0,3
25 Manufacture of fabricated metal products, except machinery and equipment	7,4	-1,5	-0,2	-0,1
28 Manufacture of machinery and equipment n.e.c.	11,4	-8,1	-6,6	-3,4
31 Manufacture of furniture	0,9	2,7	6,5	-1,7
32 Other manufacturing	0,8	-12,2	-12,2	-2,0
33 Repair and installation of machinery and equipment	4,7	-8,1	-6,1	-3,7
D Electricity, gas, steam and air conditioning supply	10,8	0,5	0,5	-2,1
E Water supply; sewerage, waste management and remediation activities	2,9	-12,9	-10,3	-18,7
36 Water collection, treatment and supply	0,4	2,4	2,4	-3,3
Main industrial groupings:				
Raw materials and productive goods	41,6	-2,4	-1,2	-2,7
Investment goods	27,6	-3,2	-0,4	0,3
Durable goods	1,3	0,8	3,6	-0,7
Other consumer goods	14,8	-3,9	-2,3	-0,4
Special indices:				
10-11 Food industry	8,5	2,1	3,2	-1,8
13-15 Textile, clothing and leather industry	1,3	-6,4	-4,4	1,1
16-17 Forest industry	13,5	-1,4	-0,2	-2,1
19-22 Chemical industry	13,1	-9,7	-9,7	-2,7
24-30 Metal industry	37,6	-1,5	-0,9	-0,5
26-27 Electrical and electronics industry	11,1	-0,6	2,7	4,9
25,28-30,33 Machinery and metal product industry	26,2	-4,9	-2,9	-2,4
29-30 Manufacture of transport equipment	2,6	7,8	7,8	-8,4

Appendix figures

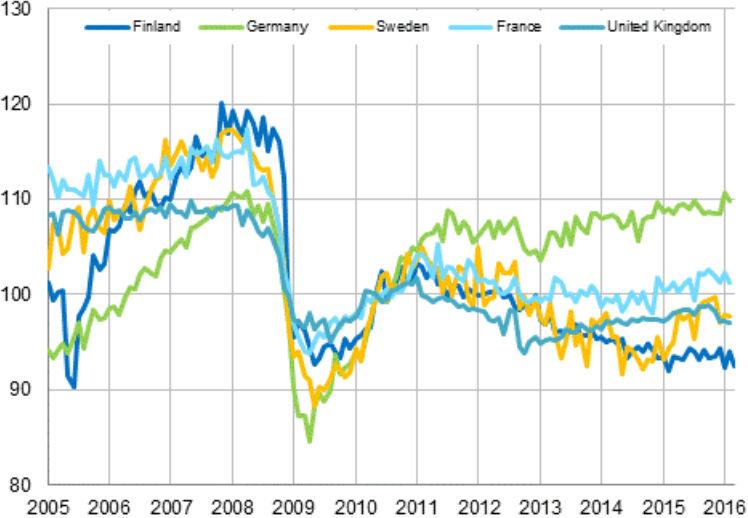
Appendix figure 1. Working day adjusted change percentage of industrial output March 2015 /March 2016, TOL 2008



Appendix figure 2. Seasonally adjusted change percentage of industrial output February 2016 /March 2016, TOL 2008



Appendix figure 3. Seasonally adjusted industrial output Finland, Germany, Sweden, France and United Kingdom (BCD) 2005 - 2016, 2010=100, TOL 2008



Revisions in these statistics

The data of the original series of industrial output have become revised according to the table below. For more information about data revisions, see Section 3 of the quality description (only in Finnish).

Revisions to data on annual changes in main industries

Main industries and Statistical reference month		Annual change (%)		Revision (%-point)
		1st release (%)	Latest release (10.05.2016) (%)	
BCDE Total industry	2015 / 10	-2,7	-3,2	-0,5
	2015 / 11	-0,4	0,9	1,3
	2015 / 12	3,7	5,2	1,5
	2016 / 01	-3,7	-4,1	-0,4
	2016 / 02	1,5	2,6	1,1
C Manufacturing	2015 / 10	-3,2	-3,8	-0,6
	2015 / 11	-0,2	1,4	1,6
	2015 / 12	3,9	5,6	1,7
	2016 / 01	-5,6	-6,0	-0,4
	2016 / 02	0,3	1,6	1,3
D Electricity, gas, steam and air conditioning supply	2015 / 10	0,9	0,9	0,0
	2015 / 11	-1,0	-1,0	0,0
	2015 / 12	2,1	2,1	0,0
	2016 / 01	9,4	9,4	0,0
	2016 / 02	8,6	8,6	0,0
10-11 Food industry	2015 / 10	-5,7	-5,1	0,6
	2015 / 11	-0,0	0,7	0,7
	2015 / 12	-4,7	-2,0	2,7
	2016 / 01	-0,5	-1,9	-1,4
	2016 / 02	6,1	6,3	0,2
16-17 Forest industry	2015 / 10	-3,9	-2,4	1,5
	2015 / 11	3,6	5,0	1,4
	2015 / 12	2,7	4,0	1,3
	2016 / 01	-3,2	-2,4	0,8
	2016 / 02	2,1	3,3	1,2
19-22 Chemical industry	2015 / 10	-1,2	-2,8	-1,6
	2015 / 11	-5,2	-2,7	2,5
	2015 / 12	-0,4	1,0	1,4
	2016 / 01	2,5	1,6	-0,9
	2016 / 02	3,1	2,5	-0,6
24-30, 33 Metal industry	2015 / 10	-3,0	-4,2	-1,2
	2015 / 11	0,7	1,9	1,2
	2015 / 12	8,2	9,6	1,4
	2016 / 01	-10,8	-10,9	-0,1
	2016 / 02	-1,8	-0,6	1,2
26-27 Electrical and electronics industry	2015 / 10	-7,2	-8,7	-1,5
	2015 / 11	-4,8	-4,8	0,0
	2015 / 12	5,3	4,6	-0,7
	2016 / 01	-17,7	-19,7	-2,0
	2016 / 02	-7,3	-8,1	-0,8

Main industries and Statistical reference month		Annual change (%)		Revision (%-point)
		1st release (%)	Latest release (10.05.2016) (%)	
Manufacturing excl. electrical and electronics industry	2015 / 10	-2,6	-3,1	-0,5
	2015 / 11	0,5	2,3	1,8
	2015 / 12	3,7	5,8	2,1
	2016 / 01	-3,6	-3,7	-0,1
	2016 / 02	1,6	3,1	1,5

Inquiries

Kari Rautio 029 551 2479

Heidi Myllylä 029 551 3792

Director in charge:

Mari Ylä-Jarkko

volyyimi.indeksi@stat.fi

www.stat.fi

Source: Volume Index of Industrial Output 2016, March. Statistics Finland