

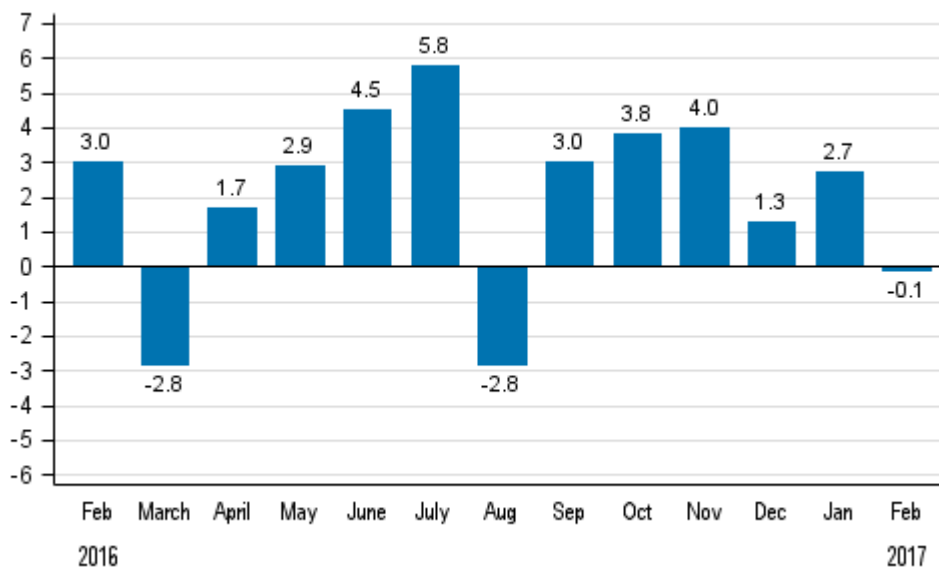
Volume index of industrial output

2017, February

Industrial output decreased by 0,1 per cent year-on year in February

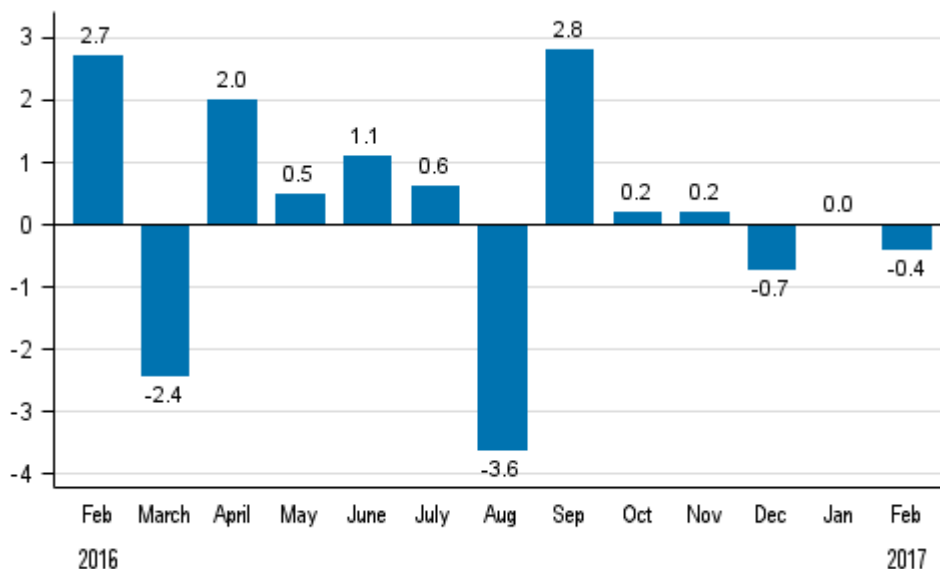
According to Statistics Finland, output of total industries adjusted for working days was 0.1 per cent lower in February 2017 than in February 2016. This year's February had one fewer working day than last year. Original output fell by 0.2 per cent in February from one year back.

Working day adjusted change in total industrial output (BCDE) from corresponding month previous year, %, TOL 2008



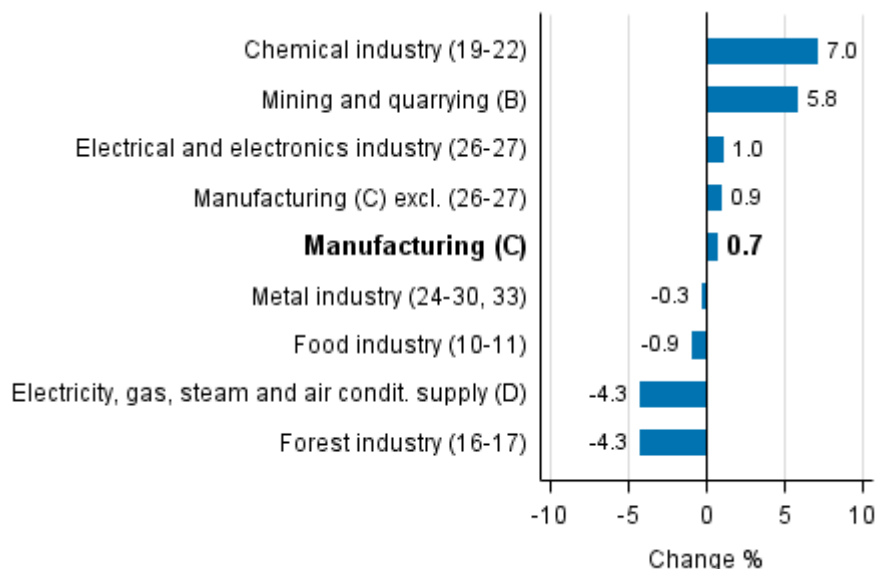
In February, seasonally adjusted output decreased by 0.4 per cent from the month before. In January, output remained on level with the previous month and in December, output declined by 0.7 per cent.

Seasonally adjusted change in total industrial output (BCDE) from previous month, %, TOL 2008



In February, output increased most, or by 7.0 per cent, in the chemical industry. Output in mining and quarrying went up by 5.8 per cent from one year ago and in the electrical and electronics industry by 1.0 per cent. Output in the metal industry went down by 0.3 per cent year-on-year and in the food industry by 0.9 per cent. In the forest industry, output declined by 4.3 per cent from the previous year.

Working day adjusted change in industrial output by industry 2/2016-2/2017, %, TOL 2008



In February, capacity utilisation rate in manufacturing (C) was 82.8 per cent, which was 0.7 per cent higher than one year earlier. In the forest industry, capacity utilisation rate was 90.2 per cent in February, or 0.4 percentage points lower than in February 2016. In the metal industry, capacity utilisation rate was 84.2 per cent in February, which was 1.8 percentage points higher than one year earlier.

Revised data for February 2017 will be published at 9 am on 10 May 2017 in connection with the release of industrial output data for March 2017. The revision is influenced by the estimation used in the latest release, which concerns the periodic tax return data used for enterprises with fewer than 50 employees. Because of the method used, seasonally adjusted figures for previous months may change even if the original figures do not become revised. The seasonally adjusted figures will also be adjusted for working days.

Contents

Industrial output decreased by 0.1 per cent year-on year in February	5
--	---

Tables

Table 1. Volume index of industrial output, value added, original, working day adjusted, seasonally adjusted change percentage.....	6
---	---

Figures

Appendix figures

Appendix figure 1. Working day adjusted change percentage of industrial output February 2016 /February 2017, TOL 2008.....	7
Appendix figure 2. Seasonally adjusted change percentage of industrial output January 2017 /February 2017, TOL 2008.....	7
Appendix figure 3. Seasonally adjusted industrial output Finland, Germany, Sweden, France and United Kingdom (BCD) 2005 - 2017, 2010=100, TOL 2008.....	8
Revisions in these statistics.....	9

Industrial output decreased by 0.1 per cent year-on year in February

According to Statistics Finland, output of total industries adjusted for working days was 0.1 per cent lower in February 2017 than in February 2016. Seasonally adjusted output went down by 0.4 per cent in February from the month before.

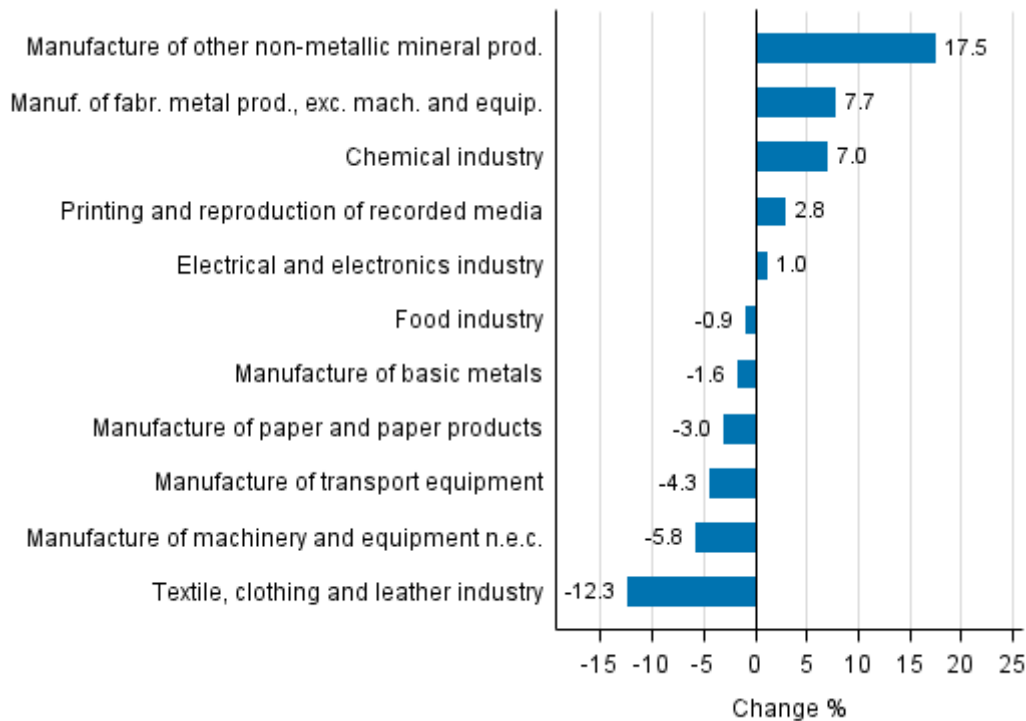
Adjusted for working days, industrial output (C) went up by 0.7 per cent in February from one year back. Seasonally adjusted output went down by 0.6 per cent in February from the month before.

Table 1. Volume index of industrial output, value added, original, working day adjusted, seasonally adjusted change percentage

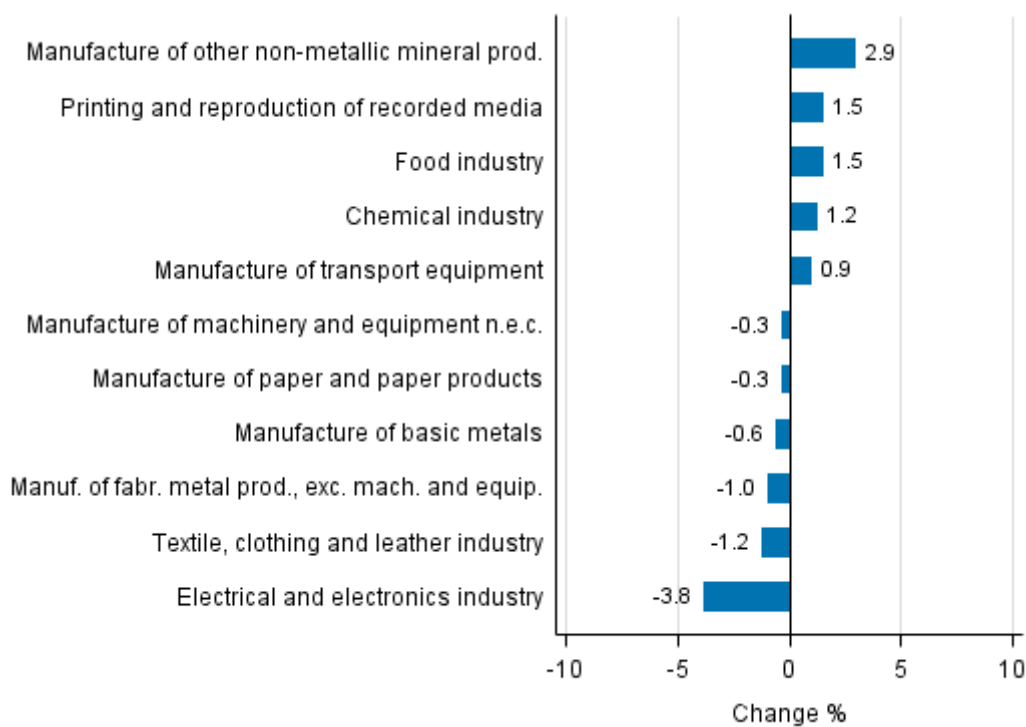
	Value added share	Original change percentage, 2017 FEB / 2016 FEB	Working day adj. change percentage, 2017 FEB / 2016 FEB	Seasonal adj. change percentage, 2017 FEB / 2017 JAN
Industry (Tol 2008)				
Total industries	100,0	-0,2	-0,1	-0,4
B Mining and quarrying	1,5	5,8	5,8	-4,0
C Manufacturing	84,3	0,5	0,7	-0,6
10 Manufacture of food products	6,9	-1,3	2,4	2,6
11 Manufacture of beverages	1,1	-1,2	-1,5	2,0
13 Manufacture of textiles	0,6	2,7	4,3	-0,4
14 Manufacture of wearing apparel	0,4	-37,1	-37,6	-9,7
15 Manufacture of leather and related products	0,2	-11,4	-11,4	-2,6
16 Manufacture of wood and of products of wood and cork, except furniture; manufacture of articles of straw and plaiting materials	3,6	-9,0	-8,0	-8,6
17 Manufacture of paper and paper products	9,8	-3,0	-3,0	-0,3
18 Printing and reproduction of recorded media	1,5	1,9	2,8	1,5
23 Manufacture of other non-metallic mineral products	2,9	12,2	17,5	2,9
24 Manufacture of basic metals	4,2	-1,1	-1,6	-0,6
25 Manufacture of fabricated metal products, except machinery and equipment	7,7	7,0	7,7	-1,0
28 Manufacture of machinery and equipment n.e.c.	10,9	-5,5	-5,8	-0,3
31 Manufacture of furniture	1,0	8,6	9,6	1,9
32 Other manufacturing	0,7	14,1	14,1	0,6
33 Repair and installation of machinery and equipment	3,9	2,6	3,3	-6,9
D Electricity, gas, steam and air conditioning supply	10,7	-4,3	-4,3	-0,4
E Water supply; sewerage, waste management and remediation activities	3,5	-8,7	-8,7	-7,5
36 Water collection, treatment and supply	1,1	-5,9	-5,9	-1,5
Main industrial groupings:				
Raw materials and productive goods	40,7	-0,7	-0,5	-1,4
Investment goods	28,1	-0,7	0,1	-1,6
Durable goods	1,3	9,8	10,7	0,3
Other consumer goods	13,9	5,4	5,9	4,7
Special indices:				
10-11 Food industry	7,9	-1,3	-0,9	1,5
13-15 Textile, clothing and leather industry	1,2	-14,4	-12,3	-1,2
16-17 Forest industry	13,5	-4,6	-4,3	-2,0
19-22 Chemical industry	13,7	7,0	7,0	1,2
24-30 Metal industry	38,1	-0,7	-0,6	-1,8
26-27 Electrical and electronics industry	12,6	0,1	1,0	-3,8
25,28-30,33 Machinery and metal product industry	25,2	-0,5	-0,3	-1,1
29-30 Manufacture of transport equipment	2,7	-4,3	-4,3	0,9

Appendix figures

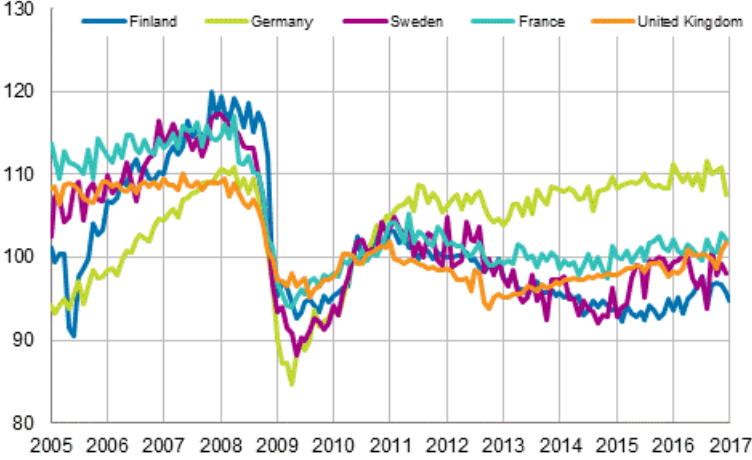
Appendix figure 1. Working day adjusted change percentage of industrial output February 2016 /February 2017, TOL 2008



Appendix figure 2. Seasonally adjusted change percentage of industrial output January 2017 /February 2017, TOL 2008



Appendix figure 3. Seasonally adjusted industrial output Finland, Germany, Sweden, France and United Kingdom (BCD) 2005 - 2017, 2010=100, TOL 2008



Revisions in these statistics

The data of the original series of industrial output have become revised according to the table below. For more information about data revisions, see Section 3 of the quality description (only in Finnish).

Revisions to data on annual changes in main industries

Main industries and Statistical reference month		Annual change (%)		Revision (%-point)
		1st release (%)	Latest release (10.04.2017) (%)	
BCDE Total industry	2016 / 09	3,3	2,8	-0,5
	2016 / 10	0,4	0,7	0,3
	2016 / 11	7,1	7,4	0,3
	2016 / 12	-0,8	-0,8	0,0
	2017 / 01	4,2	7,1	2,9
C Manufacturing	2016 / 09	4,9	4,7	-0,2
	2016 / 10	0,8	0,7	-0,1
	2016 / 11	6,8	6,8	0,0
	2016 / 12	-0,8	-1,0	-0,2
	2017 / 01	5,8	9,2	3,4
D Electricity, gas, steam and air conditioning supply	2016 / 09	-5,2	-5,2	0,0
	2016 / 10	-4,3	-4,3	0,0
	2016 / 11	9,7	9,7	0,0
	2016 / 12	-0,5	-0,5	0,0
	2017 / 01	-7,8	-7,8	0,0
10-11 Food industry	2016 / 09	-0,4	-0,4	0,0
	2016 / 10	-3,0	-3,6	-0,6
	2016 / 11	4,1	4,6	0,5
	2016 / 12	-1,6	-2,3	-0,7
	2017 / 01	5,1	5,5	0,4
16-17 Forest industry	2016 / 09	1,2	0,6	-0,6
	2016 / 10	2,4	1,9	-0,5
	2016 / 11	3,7	3,6	-0,1
	2016 / 12	1,5	0,3	-1,2
	2017 / 01	2,0	3,8	1,8
19-22 Chemical industry	2016 / 09	8,8	7,4	-1,4
	2016 / 10	9,5	5,5	-4,0
	2016 / 11	14,6	12,9	-1,7
	2016 / 12	-5,3	-3,5	1,8
	2017 / 01	3,9	5,3	1,4
24-30, 33 Metal industry	2016 / 09	6,0	6,2	0,2
	2016 / 10	-1,5	-0,5	1,0
	2016 / 11	6,0	6,0	0,0
	2016 / 12	-1,0	-1,4	-0,4
	2017 / 01	7,8	12,7	4,9
26-27 Electrical and electronics industry	2016 / 09	3,9	3,1	-0,8
	2016 / 10	4,6	1,0	-3,6
	2016 / 11	17,2	10,8	-6,4
	2016 / 12	-8,5	-9,7	-1,2
	2017 / 01	16,9	20,6	3,7

Main industries and Statistical reference month		Annual change (%)		Revision (%-point)
		1st release (%)	Latest release (10.04.2017) (%)	
Manufacturing excl. electrical and electronics industry	2016 / 09	5,0	5,0	0,0
	2016 / 10	0,3	0,7	0,4
	2016 / 11	5,3	6,1	0,8
	2016 / 12	0,6	0,9	0,3
	2017 / 01	3,9	7,3	3,4

Inquiries

Kari Rautio 029 551 2479

Maarit Mäkelä 029 551 3324

Director in charge:

Mari Ylä-Jarkko

volyyimi.indeksi@stat.fi

www.stat.fi

Source: Volume Index of Industrial Output 2017, February. Statistics Finland