

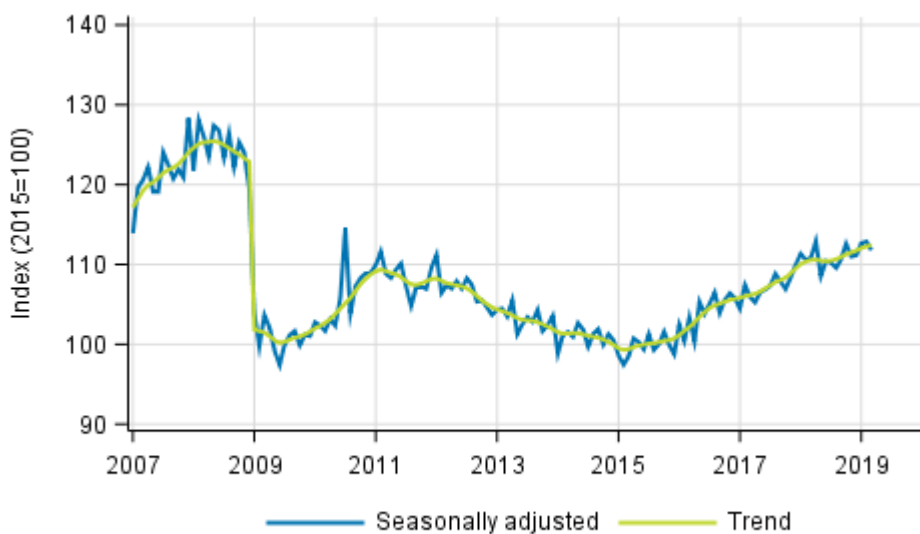
Volume index of industrial output

2019, February

Industrial output fell in February from the previous month but grew year-on-year

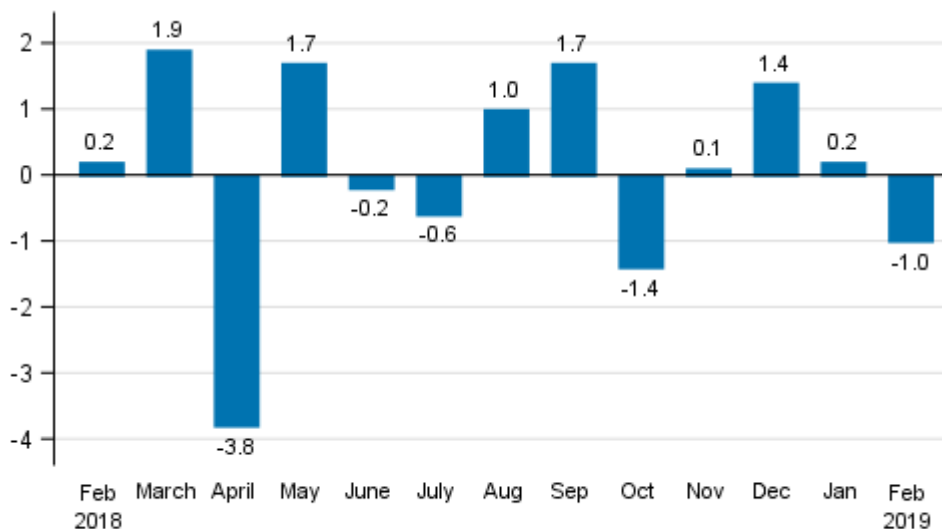
Seasonally adjusted industrial output (TOL BCD) fell by 1.0 per cent in February from the month before. According to Statistics Finland, industrial output adjusted for working days was 0.7 per cent higher in February 2019 than in February 2018.

Trend and seasonally adjusted series of industrial output (BCD), 2007/01 to 2019/02



Source: Statistics Finland

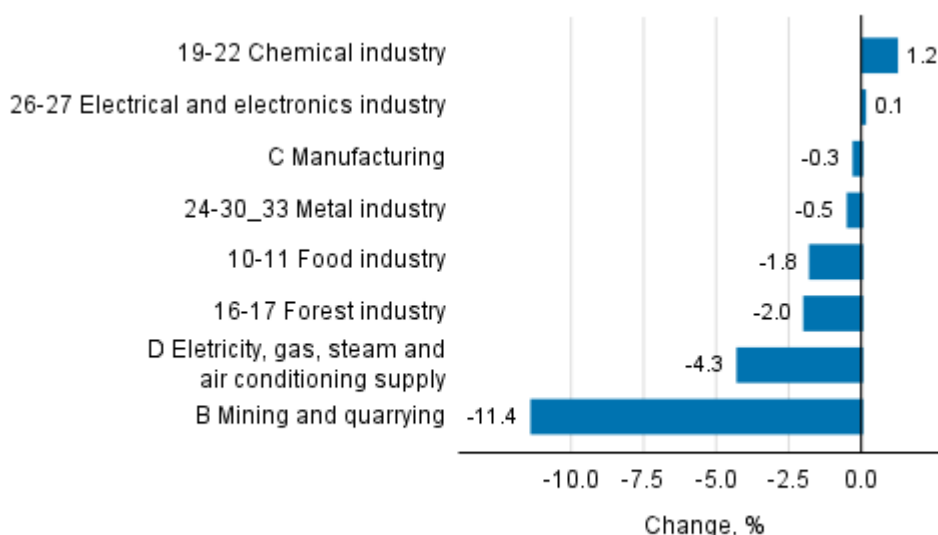
Seasonally adjusted change in industrial output (BCD) from previous month, %, TOL 2008



Source: Statistics Finland

Adjusted for seasonal variation, industrial output increased in February most in the chemical industry, by 1.2 per cent. Output in the metal industry went down by 0.5 per cent and in the forest industry by 2.0 per cent. Output decreased most in mining and quarrying, by 11.4 per cent.

Seasonal adjusted change in industrial output by industry, 01/2019 to 02/2019, %, TOL 2008



Source: Statistics Finland

Revised data for February 2019 will be published at 8 am on 10 May 2019 in connection with the release of industrial output data for March 2019. The revision is influenced by the estimation used in the latest release, which is based on the Tax Administration's data on self-assessed taxes used for enterprises with fewer than 50 employees. Because of the method used, seasonally adjusted figures for previous months may change even if the original figures do not become revised. The seasonally adjusted figures are also adjusted for working days.

Contents

Industrial output grew by 0.7 per cent year-on year in February.....	4
--	---

Tables

Table 1. Volume index of industrial output, value added, original, working day adjusted, seasonally adjusted change percentage.....	5
---	---

Figures

Appendix figures

Appendix figure 1. Three months' year-on-year change in manufacturing (C) sub-industries adjusted for working days (TOL 2008).....	6
Appendix figure 2. Trend series of manufacturing sub-industries, 2007/01 to 2019/02, TOL 2008.....	6
Appendix figure 3. Seasonally adjusted industrial output Finland, Germany, Sweden, France and United Kingdom (BCD) 2007 to 2019, TOL 2008.....	7

Industrial output grew by 0.7 per cent year-on year in February

According to Statistics Finland output of total industries (BCD) adjusted for working days was 0.7 per cent higher in February 2019 than in February 2018. Seasonally adjusted output decreased by 1.0 per cent from January.

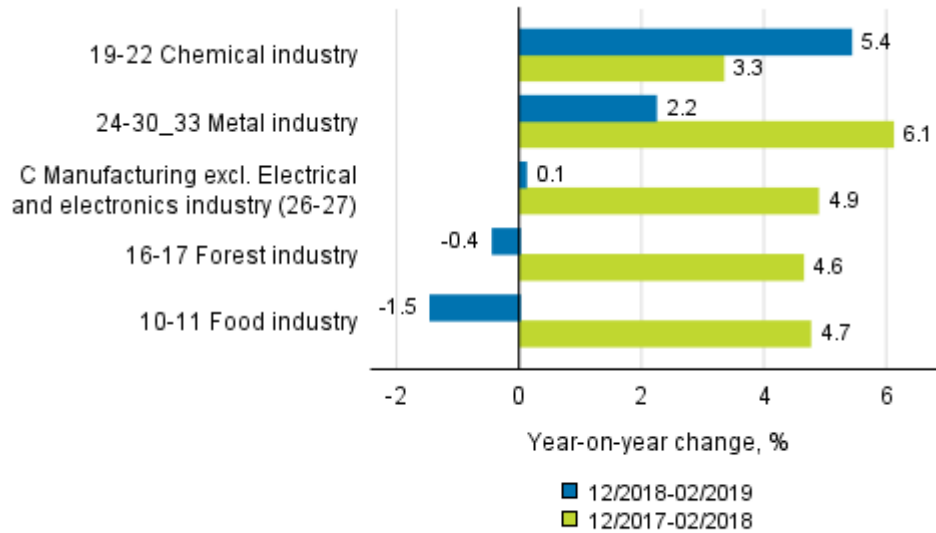
Adjusted for working days, industrial output (C) was 1.4 per cent higher in February than in February 2018. Seasonally adjusted output went down by 0.3 per cent in February from the month before.

Table 1. Volume index of industrial output, value added, original, working day adjusted, seasonally adjusted change percentage

	Value added share	Original change percentage, 2019 FEB / 2018 FEB	Working day adj. change percentage, 2019 FEB / 2018 FEB	Seasonal adj. change percentage, 2019 FEB / 2019 JAN
Industry (Tot 2008)				
B Mining and quarrying	2,4	14,8	14,8	-11,4
BCD Total industries	100,0	0,7	0,7	-1,0
C Manufacturing	86,7	1,4	1,4	-0,3
10 Manufacture of food products	6,2	-2,7	-2,7	-1,9
10-11 Food industry	7,2	-2,3	-2,3	-1,8
11 Manufacture of beverages	1,1	0,4	0,4	-1,6
13 Manufacture of textiles	0,6	20,2	20,2	10,5
13-15 Textile, clothing and leather industry	1,1	8,0	8,0	1,1
14 Manufacture of wearing apparel	0,4	-6,8	-6,8	-5,3
15 Manufacture of leather and related products	0,2	4,0	4,0	-2,6
16 Manufacture of wood and of products of wood and cork, except furniture: Manufacture of articles of straw and plaiting materials	3,5	4,6	4,6	-1,3
16-17 Forest industry	13,3	-2,4	-2,4	-2,0
17 Manufacture of paper and paper products	9,7	-4,6	-4,6	-2,2
18 Printing and reproduction of recorded media	1,2	-1,1	-1,1	-0,1
19-22 Chemical industry	15,7	4,8	4,8	1,2
23 Manufacture of other non-metallic mineral products	3,1	-2,0	-2,0	-0,5
24 Manufacture of basic metals	5,3	-12,7	-12,7	-4,8
24-30_33 Metal industry	43,4	2,7	2,7	-0,5
25 Manufacture of fabricated metal products, except machinery and equipment	8,2	-4,6	-4,6	-1,0
26-27 Electrical and electronics industry	13,1	12,0	12,0	0,1
28 Manufacture of machinery and equipment n.e. .	10,4	4,9	4,9	3,4
29-30 Manufacture of transport equipment	2,8	-1,4	-1,4	-15,5
31 Manufacture of furniture	1,0	11,5	11,5	3,1
32 Other manufacturing	0,7	2,5	2,5	-0,4
33 Repair and installation of machinery and equipment	3,7	12,0	12,0	-3,7
C Manufacturing excl. Electrical and electronics industry (26-27)	73,6	-0,6	-0,6	-0,8
D Electricity, gas, steam and air conditioning supply	10,9	-5,6	-5,6	-4,3
Investment goods	28,8	7,1	7,1	-0,0
Durable goods	1,3	7,7	7,7	2,2
Raw materials and productive goods	42,2	-1,6	-1,6	-1,7
Other consumer goods	13,1	0,6	0,6	3,5

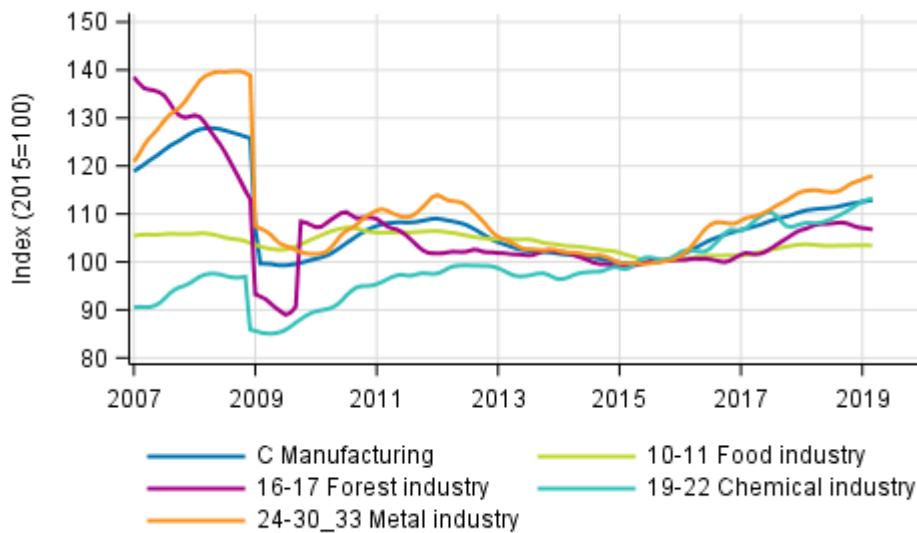
Appendix figures

Appendix figure 1. Three months' year-on-year change in manufacturing (C) sub-industries adjusted for working days (TOL 2008)



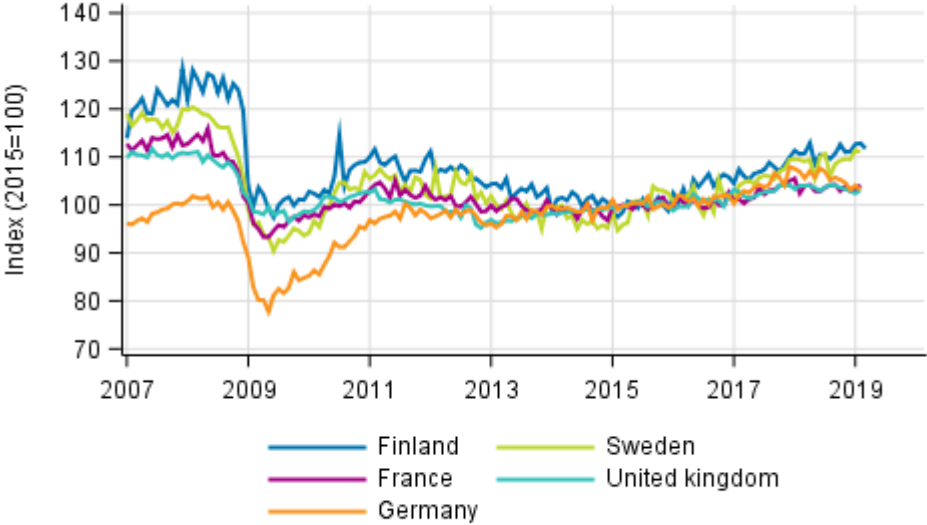
Source: Statistics Finland

Appendix figure 2. Trend series of manufacturing sub-industries, 2007/01 to 2019/02, TOL 2008



Source: Statistics Finland

Appendix figure 3. Seasonally adjusted industrial output Finland, Germany, Sweden, France and United Kingdom (BCD) 2007 to 2019, TOL 2008



Source: Statistics Finland

Inquiries

Kari Rautio 029 551 2479

Maarit Mäkelä 029 551 3324

Director in charge:

Mari Ylä-Jarkko

volyyymi.indeksi@stat.fi

www.stat.fi

Source: Volume Index of Industrial Output 2019, February. Statistics Finland