

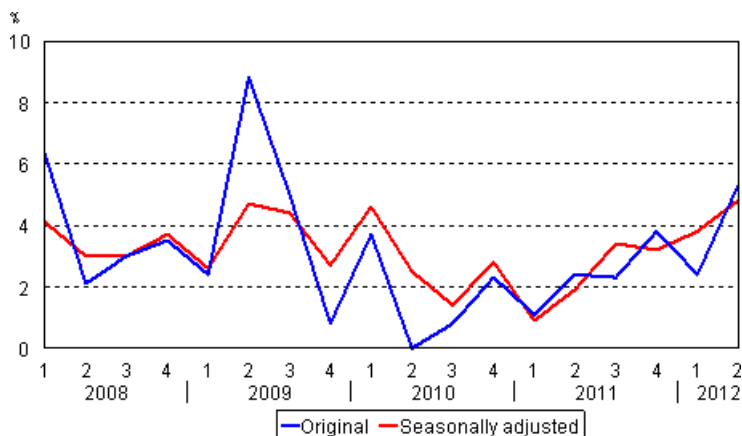
Labour Cost Index

2012, 2nd quarter, seasonally adjusted data

Seasonally adjusted cost of an hour worked increased by 4.8 per cent in April to June

Seasonally adjusted labour costs in the private sector rose by 4.8 per cent in April to June 2012 when compared with the respective period of the year before. At the same time, original labour costs unadjusted for seasonal variation rose by 5.3 per cent from the respective period of the previous year. Over the same time period, the index of wage and salary earnings for the private sector went up by 3.7 per cent.

Year-on-year change in labour costs from the respective quarter of previous year %, original and seasonally adjusted series



The series of Labour costs are seasonally adjusted with the Tramo/Seats method. The latest observations of the series adjusted for seasonal and random variation (seasonally adjusted and trend series) become revised with new observations in seasonal adjustment methods. Revisions especially at turning points of economic trends may be significant, which should be taken into consideration when using seasonally adjusted and trend data. Information on seasonal adjustment method: http://www.tilastokeskus.fi/til/tramo_seats_en.html

Statistics Finland publishes seasonally adjusted series now for the first time because sufficient observations are available for calculating reliable results. The timing and number of so-called moving mid-week holidays, such as Easter and Epiphany, and working days affect the comparability of data concerning the whole

year, and the first, second and fourth quarters. The second quarter of 2012 had one mid-week holiday more than the second quarter of the previous year.

Calculated by industry, seasonally adjusted cost of an hour worked rose by 5.5 per cent in all manufacturing in April to June 2012 when compared with the respective period of the year before. In the metal industry, the cost of an hour worked went up by 10.6 per cent and in construction by 5.6 per cent in the April to June period of 2012 from the same period of the previous year. The respective rise in business service activities was 4.3 per cent.

Year-on-year change in labour costs in total industries, manufacturing, construction and services by TOL 2008

Code	Industry	Labour Costs, Year-on-year change	
		Seasonally adjusted labour costs,	Labour costs, total
B-S	Total	4,8	5,3
B-E	Manufacturing	5,5	6,0
F	Construction	5,6	6,5
G-N	Business service sector	4,3	4,3

Contents

Tables

Appendix tables

Appendix table 1. Seasonally adjusted labour costs, Labour Cost Index 2008=100.....4

Appendix table 2. Seasonally adjusted labour costs, percentage changes, Labour Cost Index 2008=100.....4

Appendix table 3. Standard Industrial Classification 2008.....4

Appendix tables

Appendix table 1. Seasonally adjusted labour costs, Labour Cost Index 2008=100

Industry code	Standard Industrial Classification	Whole year 2007*	Whole year 2008	Whole year 2009*	Whole year 2010*	2011 /1*	2011 /2*	2011 /3*	2011 /4*	Whole year 2011*	2012 /1*	2012 /2*
B-S	Total, private sector	96,7	100,0	103,6	106,5	107,4	108,3	109,6	110,7	109,0	111,5	113,5
B-E	Industry	98,3	100,0	103,6	105,1	106,0	107,1	108,0	109,3	107,6	110,4	113,0
C	Manufacturing	98,3	100,0	104,3	105,8	106,5	107,6	108,3	109,7	108,0	111,1	114,0
10,11	Food industry	98,4	100,0	104,2	106,0	107,4	107,6	107,5	107,7	107,5	107,5	108,1
16,17	Forest industry	98,6	100,0	105,3	108,4	109,7	110,8	110,2	110,5	110,3	110,9	112,3
19–22	Chemical industry	99,4	100,0	103,0	106,0	107,9	108,7	110,0	110,9	109,4	112,2	114,0
24–30	Metal industry	99,7	100,0	109,3,	103,1	102,9	102,7	103,2	106,3	103,8	111,8	113,7
F	Construction	92,1	100,0	104,7	106,8	107,3	107,7	109,2	110,5	108,7	110,6	113,7
G-N	Yritystalouden palvelut Services of the business economy	94,8	100,0	103,8	106,4	107,8	108,3	109,4	110,4	109,0	111,6	112,9
G	Wholesale and retail trade	94,2	100,0	97,9	101,0	100,9	101,3	102,9	102,9	102,0	103,7	106,1
H	Transportation and storage	90,9	100,0	97,2	95,3	96,5	97,3	98,1	99,1	97,7	99,8	101,1
J	Information and communication	90,2	100,0	109,9	112,6	114,8	115,4	116,2	117,1	115,9	117,4	118,1
K	Financial and insurance activities	102,3	100,0	105,8	109,8	110,6	110,8	111,2	112,7	111,3	113,6	115,1

Appendix table 2. Seasonally adjusted labour costs, percentage changes, Labour Cost Index 2008=100

Industry code	Standard Industrial Classification	Change 2008/2007*	Change 2009/2008*	Change 2010/2009*	2011 /1*	2011 /2*	2011 /3*	2011 /4*	Change 2011/2010*	2012 /1*	2012 /2*
B-S	Total, private sector	3,5	3,6	2,8	0,9	1,9	3,4	3,2	2,3,	3,8	4,8
B-E	Industry	1,7	3,6	1,5	-0,2	2,5	4,1	3,1	2,4	4,2	5,5
C	Manufacturing	1,7	4,3	1,4	-0,4	2,3	3,9	2,6	2,1	4,3	6,0
10–11	Food industry	1,6	4,2	1,8	1,9	1,7	1,3	0,7	1,4	0,2	0,5
16–17	Forest industry	1,4	5,3	2,9	1,7	3,4	1,5	0,6	1,8	1,1	1,3
19–22	Chemical industry	0,6	3,0	2,9	2,6	3,1	3,6	3,6	3,2	4,0	4,8
24–30	Metal industry	0,3	9,3	-5,7	-1,3	1,6	0,9	1,3	0,6	8,7	10,6
F	Construction	8,6	4,7	2,0	-0,4	1,2	2,3	4,1	1,8	3,1	5,6
G-N	Services of the business economy	5,5	3,8	2,6	2,1	2,1	2,4	3,0	2,4	3,5	4,3
G	Wholesale and retail trade	6,1	-2,1	3,1	0,7	0,7	1,2	1,5	1,0	2,8	4,8
H	Transportation and storage	10,0	-2,8	-1,9	1,8	2,4	2,7	3,1	2,5	3,4	3,9
J	Information and communication	10,9	9,9	2,5	2,4	2,8	3,1	3,1	2,9	2,3	2,3
K	Financial and insurance activities	-2,2	5,8	3,7	1,8	1,2	0,3	2,5	1,4	2,7	3,9

Appendix table 3. Standard Industrial Classification 2008

Standard Industrial Classification	Code
Mining and quarrying	B
Manufacturing	C
Electricity, gas, steam and air conditioning supply	D
Water supply; sewerage; water supply; sewerage, waste management and remediation activities	E
Construction	F
Wholesale and retail trade; repair of motor vehicles and motorcycles	G
Transportation and storage	H
Accommodation and food service activities	I
Information and communication	J
Financial and insurance activities	K
Real estate activities	L
Professional, scientific and technical activities	M
Administrative and support service activities	N
Public administration and defense; compulsory social security	O
Education	P
Human health and social work activities	Q
Arts, entertainment and recreation	R
Other service activities	S

Suomen virallinen tilasto
Finlands officiella statistik
Official Statistics of Finland

Wages and salaries and Labour Costs 2012

Inquiries

Pekka Haapala 09 1734 3460

Director in charge:

Kari Molnar

tvkindeksi@stat.fi

www.stat.fi

Source: Wages, Salaries and Labour Costs, Statistics Finland