

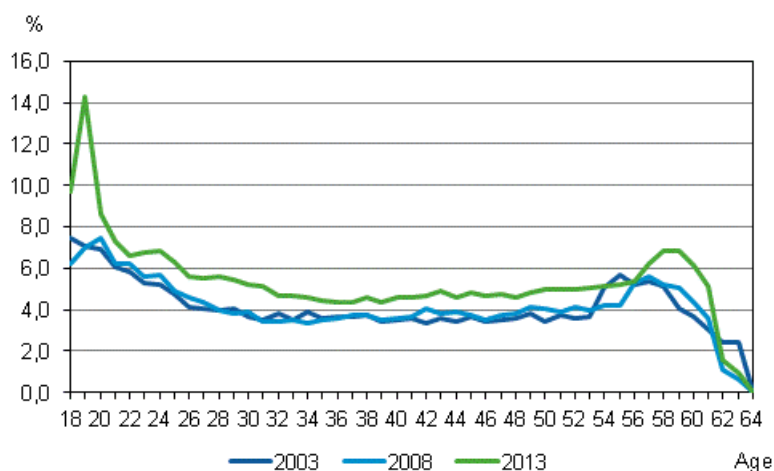
# Employment 2013

## Background information on unemployed persons

### Risk of unemployment highest for young men in 2013

Of the 2.3 million persons employed at the end of 2012, 4.4 per cent (103,000 persons) were unemployed after one year. The risk of unemployment was higher for men than for women. Examined by age, the risk of unemployment was greatest among employed persons aged 18 to 24. By region, the risk was highest in the region of Kainuu.

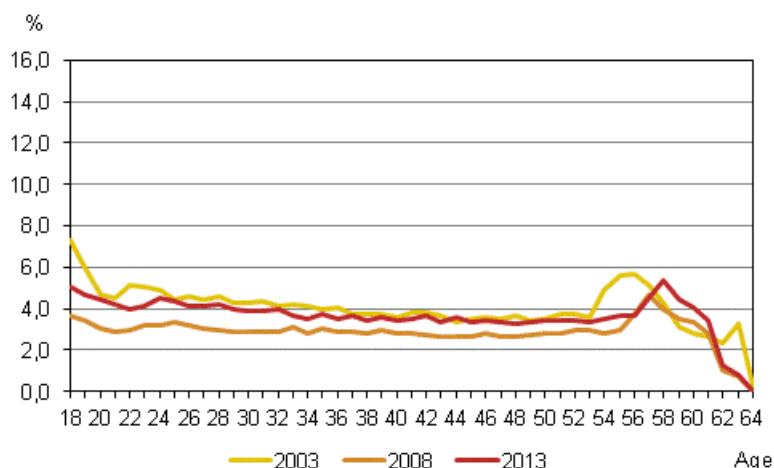
**Risk of unemployment for employed men aged 18 to 64 by age in 2003, 2008 and 2013, (%)**



### Risk of unemployment highest for young and aged employed persons

Examined by age, the risk of unemployment for employed persons – the risk for a person employed at the end of the year to lose his or her job during the following year – was in 2013 for both women and men higher than average for young and older employed persons. The risk was particularly high for young men. The situation has been similar in all the examined years, 2003, 2008 and 2013.

**Risk of unemployment for employed women aged 18 to 64 by age in 2003, 2008 and 2013, (%)**

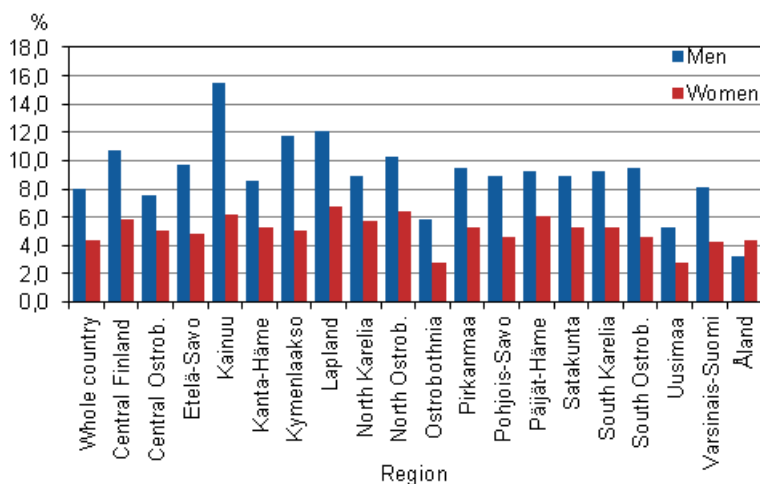


However, the levels of unemployment risks and changes in them differ between genders in different years. In 2003, the risk of unemployment for employed persons was 4.0 per cent for men and 4.1 per cent for women, while after ten years, the risk was 5.2 per cent for men and 3.7 per cent for women. Men's risk of unemployment has grown in both 2008 and 2013. In 2013, the risk grew particularly in the age group of men aged under 25, where the risk of becoming unemployed was at its highest. For women, the risk of unemployment in 2013 was between the levels of 2003 (4.1%) and 2008 (2.9%).

***Risk of unemployment for employed persons highest in Kainuu***

Examined by region, the risk of unemployment for employed persons aged 18 to 64 was at its highest in Kainuu (7.5%), Central Finland (6.1%) and Lapland (6.0%). The risk was lowest in Åland, 1.7 per cent. Women's risk of unemployment was lower than men's in all regions. The risk of unemployment was also highest in the 18 to 24 age group (including both men and women) in Kainuu. However, the risk for young women was highest in Lapland.

**Risk of unemployment for employed men and women aged 18 to 24 by region in 2013, (%)**



### *Young people less often unemployed in the previous year as well*

Compared to older age groups, young people were clearly less often unemployed for two years in a row. Of the persons aged 18 to 24 unemployed at the end of 2013, 23.9 per cent had also been unemployed one year earlier, while 68.6 per cent of the unemployed persons aged 55 or over had been unemployed a year before. For all unemployed persons aged 18 to 64, the share was 49.0 per cent.

Women's risk of recurrent unemployment was 45.9 per cent, for men 51.1 per cent. The risk of recurrent unemployment was higher for men than for women in nearly all age groups. The differences between genders were at their lowest in the youngest and oldest age groups. For women aged under 20 and over 60, the risk of recurrent unemployment was slightly higher than the risk for men.

The data on unemployment in the employment statistics derive from the Register of Job Seekers of the Ministry of Employment and the Economy.

# Contents

## Tables

### Appendix tables

Appendix table 1. Employed persons aged 18 to 64 in 2012, unemployed persons in 2013 and risk of becoming unemployed (%) in 2013 by gender and age group.....5

Appendix table 2. Risk of becoming unemployed for employed persons aged 18 to 64 (%) by gender, age group and region in 2013.....6

## Appendix tables

**Appendix table 1. Employed persons aged 18 to 64 in 2012, unemployed persons in 2013 and risk of becoming unemployed (%) in 2013 by gender and age group**

Corrected on 9 Juni 2014. The corrections are indicated in red.					
Gender	Age group	Employed persons 2012 aged 18 to 64	Unemployed persons 2013 aged 18 to 64	Employed persons 2012, unemployed persons 2013	Risk of becoming unemployed 2013, %
Total	Total	2 316 769	327 862	102 815	4.4
	18-24	235 208	44 362	14 183	6.0
	25-34	515 629	68 735	23 843	4.6
	35-44	535 211	60 558	21 630	4.0
	45-54	598 238	72 219	24 597	4.1
	55-64	432 483	81 988	18 562	4.3
Men	Total	1 149 662	191 710	59 801	5.2
	18-24	108 409	28 822	8 647	8.0
	25-34	270 355	40 427	14 149	5.2
	35-44	274 182	34 539	12 407	4.5
	45-54	292 652	42 762	14 227	4.9
	55-64	204 064	45 160	10 371	5.1
Women	Total	1 167 107	136 152	43 014	3.7
	18-24	126 799	15 540	5 536	4.4
	25-34	245 274	28 308	9 694	4.0
	35-44	261 029	26 019	9 223	3.5
	45-54	305 586	29 457	10 370	3.4
	55-64	228 419	36 828	8 191	3.6

**Appendix table 2. Risk of becoming unemployed for employed persons aged 18 to 64 (%) by gender, age group and region in 2013**

Gender	Region	Age group 2012					Total employed 2012, unemployed 2013 (%)	Total employed 2012, unemployed 2013
		18–24	25–34	35–44	45–54	55–64		
Total	Whole country	6.0	4.6	4.0	4.1	4.3	4.4	102 815
	Central Finland	8.1	6.8	5.6	5.6	5.6	6.1	6 653
	Central Ostrobothnia	6.3	4.1	3.2	2.6	2.9	3.5	995
	Etelä-Savo	7.1	5.1	4.4	4.3	4.2	4.7	2 746
	Kainuu	10.8	7.4	6.9	7.2	7.5	7.5	2 257
	Kanta-Häme	6.8	4.1	3.4	3.6	4.1	4.1	3 037
	Kymenlaakso	8.1	5.3	4.6	4.6	5.1	5.1	3 581
	Lapland	9.3	6.6	5.2	5.4	5.8	6.0	4 244
	North Karelia	7.2	5.5	4.6	5.2	5.5	5.4	3 344
	North Ostrobothnia	8.3	6.0	4.4	4.4	4.4	5.2	8 169
	Ostrobothnia	4.3	3.5	2.9	2.9	3.0	3.2	2 550
	Pirkanmaa	7.2	5.4	4.8	4.5	4.9	5.1	10 821
	Pohjois-Savo	6.6	5.4	4.6	4.3	4.4	4.8	4 794
	Päijät-Häme	7.5	5.7	4.6	4.9	5.6	5.4	4 401
	Satakunta	7.0	5.0	4.1	3.9	4.1	4.5	4 080
	South Karelia	7.2	4.8	4.1	4.1	4.9	4.7	2 443
	South Ostrobothnia	7.0	4.5	3.8	3.7	4.2	4.3	3 432
	Uusimaa	3.9	3.4	3.4	3.5	3.5	3.5	26 102
	Varsinais-Suomi	5.9	4.8	4.1	4.2	4.2	4.5	8 933
	Åland	3.8	2.0	1.4	1.4	1.2	1.7	233
Men	Whole country	8.0	5.2	4.5	4.9	5.1	5.2	59 801
	Central Finland	10.7	7.3	6.6	7.1	7.0	7.4	4 029
	Central Ostrobothnia	7.6	4.5	3.5	2.6	3.0	3.8	555
	Etelä-Savo	9.7	6.0	5.6	5.5	5.1	5.8	1 687
	Kainuu	15.5	9.3	8.4	9.1	9.2	9.6	1 433
	Kanta-Häme	8.6	4.9	3.7	4.2	4.7	4.7	1 754
	Kymenlaakso	11.7	6.6	4.8	5.4	6.0	6.1	2 118
	Lapland	12.1	7.4	6.0	6.5	6.8	7.2	2 505
	North Karelia	8.9	5.9	5.0	6.2	6.2	6.1	1 892
	North Ostrobothnia	10.3	6.4	4.8	5.4	5.1	6.0	4 811
	Ostrobothnia	5.8	4.1	3.5	3.5	3.8	4.0	1 618
	Pirkanmaa	9.5	6.0	5.3	5.2	5.7	5.9	6 209
	Pohjois-Savo	8.9	6.7	5.5	5.5	5.5	6.1	2 985
	Päijät-Häme	9.2	6.5	5.2	5.8	6.4	6.2	2 515
	Satakunta	8.9	5.5	4.3	4.8	4.8	5.2	2 379
	South Karelia	9.2	5.4	4.5	4.7	5.5	5.3	1 415
	South Ostrobothnia	9.5	5.1	4.6	4.5	5.3	5.3	2 144
	Uusimaa	5.3	3.8	3.7	3.9	4.1	4.0	14 555
	Varsinais-Suomi	8.1	5.3	4.5	4.9	4.8	5.2	5 066
	Åland	3.2	2.0	2.1	1.7	1.3	2.0	131

Gender	Region	Age group 2012					Total employed 2012, unemployed 2013 (%)	Total employed 2012, unemployed 2013
		18–24	25–34	35–44	45–54	55–64		
Women	Whole country	4.4	4.0	3.5	3.4	3.6	3.7	43 014
	Central Finland	5.9	6.1	4.5	4.0	4.4	4.8	2 624
	Central Ostrobothnia	5.0	3.6	3.0	2.5	2.9	3.2	440
	Etelä-Savo	4.8	4.2	3.2	3.2	3.5	3.6	1 059
	Kainuu	6.2	5.1	5.3	5.4	5.9	5.5	824
	Kanta-Häme	5.3	3.1	3.2	3.1	3.6	3.4	1 283
	Kymenlaakso	5.1	3.8	4.3	3.8	4.3	4.1	1 463
	Lapland	6.7	5.6	4.3	4.4	4.8	4.9	1 739
	North Karelia	5.7	5.0	4.1	4.3	4.8	4.7	1 452
	North Ostrobothnia	6.4	5.4	3.8	3.4	3.8	4.3	3 358
	Ostrobothnia	2.8	2.7	2.3	2.3	2.1	2.4	932
	Pirkanmaa	5.3	4.7	4.2	4.0	4.1	4.4	4 612
	Pohjois-Savo	4.6	3.9	3.7	3.2	3.4	3.6	1 809
	Päijät-Häme	6.1	4.9	3.9	4.0	4.9	4.6	1 886
	Satakunta	5.3	4.4	3.9	3.0	3.4	3.8	1 701
	South Karelia	5.3	4.1	3.7	3.4	4.3	4.0	1 028
	South Ostrobothnia	4.6	3.7	3.0	3.0	3.1	3.3	1 288
	Uusimaa	2.8	3.0	3.1	3.0	2.9	3.0	11 547
	Varsinais-Suomi	4.2	4.1	3.7	3.6	3.6	3.8	3 867
	Åland	4.4	2.0	0.7	1.0	1.1	1.5	102

### Inquiries

Aura Pasila                      09 1734 3576  
Director in charge:  
Riitta Harala  
tyossakaynti@stat.fi  
www.stat.fi  
Source: Employment Statistics, Statistics Finland