

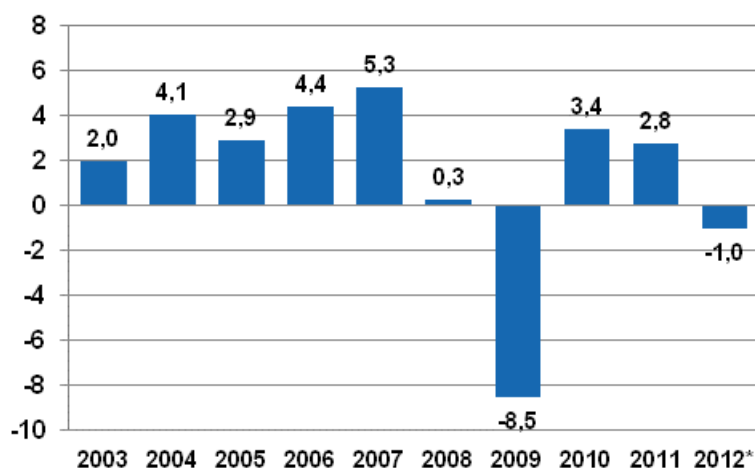
# National Accounts 2012

## Gross domestic product fell by one per cent in 2012

According to Statistics Finland's revised preliminary data, the volume of Finland's gross domestic product fell by 1.0 per cent in 2012, while previously the decrease was estimated to be 0.8 per cent. The growth in the gross domestic product in 2011 was revised upwards, from 2.7 per cent to 2.8 per cent.

Households' real income diminished by 0.2 per cent in 2012. Households' adjusted real income describing their economic well-being declined by 0.1 per cent. Besides net income, it also takes into consideration welfare services, such as educational, health and social services that general government and organisations produce for households. Households' saving rate declined to 0.8 per cent but remained positive, which means that households spent less than they earned.

### Annual change in the volume of gross domestic product, per cent



The gross domestic product was revised downwards in 2012 because new data on wood sales and the finances and activities of municipalities were received. National income, in turn, was revised upwards because more income was received from foreign investments than previously estimated.

Production was reduced by a decrease in exports and investments. The volume of exports shrunk by 0.2 per cent and that of imports by 0.7 per cent. The volume of investments decreased by 0.8 per cent. Only

consumption expenditure grew slightly, the volume of private consumption expenditure by 0.3 per cent and that of public consumption expenditure by 0.5 per cent.

Preliminary data for the year 2013 will be released on 3 March 2014. The new system of national accounts, ESA 2010, will be adopted in Finland on 11 July 2014, when new retrospective time series will also be published.

[National Accounts 2003-2012, Tables, PDF](#)

# Contents

## Tables

### Appendix tables

|                                                                                  |   |
|----------------------------------------------------------------------------------|---|
| Appendix table 1. Gross domestic product (GDP) at market prices 1975-2012* ..... | 4 |
| Revisions on these statistics.....                                               | 5 |

## Appendix tables

**Appendix table 1. Gross domestic product (GDP) at market prices 1975-2012\***

| Year | At current prices,<br>million EUR | At reference year 2000<br>prices, million EUR | Change in<br>value, % | Change in<br>volume, % | Change in<br>prices, % | GDP per capita,<br>EUR |
|------|-----------------------------------|-----------------------------------------------|-----------------------|------------------------|------------------------|------------------------|
| 1975 | 18 018                            | 68 238                                        | .                     | .                      | .                      | 3 824                  |
| 1976 | 20 453                            | 68 473                                        | 13,5                  | 0,3                    | 13,1                   | 4 328                  |
| 1977 | 22 433                            | 68 637                                        | 9,7                   | 0,2                    | 9,4                    | 4 734                  |
| 1978 | 24 809                            | 70 641                                        | 10,6                  | 2,9                    | 7,5                    | 5 220                  |
| 1979 | 28 783                            | 75 672                                        | 16,0                  | 7,1                    | 8,3                    | 6 041                  |
| 1980 | 33 257                            | 79 750                                        | 15,5                  | 5,4                    | 9,6                    | 6 958                  |
| 1981 | 37 590                            | 80 776                                        | 13,0                  | 1,3                    | 11,6                   | 7 831                  |
| 1982 | 42 300                            | 83 239                                        | 12,5                  | 3,0                    | 9,2                    | 8 763                  |
| 1983 | 47 107                            | 85 756                                        | 11,4                  | 3,0                    | 8,1                    | 9 701                  |
| 1984 | 52 681                            | 88 421                                        | 11,8                  | 3,1                    | 8,5                    | 10 791                 |
| 1985 | 57 311                            | 91 341                                        | 8,8                   | 3,3                    | 5,3                    | 11 691                 |
| 1986 | 61 660                            | 93 754                                        | 7,6                   | 2,6                    | 4,8                    | 12 537                 |
| 1987 | 66 571                            | 97 026                                        | 8,0                   | 3,5                    | 4,3                    | 13 497                 |
| 1988 | 75 403                            | 102 093                                       | 13,3                  | 5,2                    | 7,6                    | 15 244                 |
| 1989 | 84 291                            | 107 277                                       | 11,8                  | 5,1                    | 6,4                    | 16 979                 |
| 1990 | 89 316                            | 107 819                                       | 6,0                   | 0,5                    | 5,4                    | 17 912                 |
| 1991 | 85 217                            | 101 350                                       | -4,6                  | -6,0                   | 1,5                    | 16 997                 |
| 1992 | 83 003                            | 97 818                                        | -2,6                  | -3,5                   | 0,9                    | 16 462                 |
| 1993 | 83 914                            | 97 024                                        | 1,1                   | -0,8                   | 1,9                    | 16 563                 |
| 1994 | 88 404                            | 100 569                                       | 5,4                   | 3,7                    | 1,6                    | 17 374                 |
| 1995 | 96 064                            | 104 554                                       | 8,7                   | 4,0                    | 4,5                    | 18 807                 |
| 1996 | 99 131                            | 108 287                                       | 3,2                   | 3,6                    | -0,4                   | 19 344                 |
| 1997 | 107 380                           | 115 007                                       | 8,3                   | 6,2                    | 2,0                    | 20 892                 |
| 1998 | 116 631                           | 120 792                                       | 8,6                   | 5,0                    | 3,4                    | 22 631                 |
| 1999 | 122 321                           | 125 513                                       | 4,9                   | 3,9                    | 0,9                    | 23 680                 |
| 2000 | 132 195                           | 132 195                                       | 8,1                   | 5,3                    | 2,6                    | 25 539                 |
| 2001 | 139 288                           | 135 214                                       | 5,4                   | 2,3                    | 3,0                    | 26 848                 |
| 2002 | 143 646                           | 137 694                                       | 3,1                   | 1,8                    | 1,3                    | 27 621                 |
| 2003 | 145 531                           | 140 465                                       | 1,3                   | 2,0                    | -0,7                   | 27 917                 |
| 2004 | 152 266                           | 146 260                                       | 4,6                   | 4,1                    | 0,5                    | 29 124                 |
| 2005 | 157 429                           | 150 524                                       | 3,4                   | 2,9                    | 0,5                    | 30 009                 |
| 2006 | 165 765                           | 157 164                                       | 5,3                   | 4,4                    | 0,8                    | 31 477                 |
| 2007 | 179 830                           | 165 549                                       | 8,5                   | 5,3                    | 3,0                    | 34 003                 |
| 2008 | 185 670                           | 166 035                                       | 3,2                   | 0,3                    | 2,9                    | 34 944                 |
| 2009 | 172 318                           | 151 858                                       | -7,2                  | -8,5                   | 1,5                    | 32 276                 |
| 2010 | 178 724                           | 156 965                                       | 3,7                   | 3,4                    | 0,3                    | 33 323                 |
| 2011 | 188 744                           | 161 399                                       | 5,6                   | 2,8                    | 2,7                    | 35 028                 |
| 2012 | 192 350                           | 159 772                                       | 1,9                   | -1,0                   | 2,9                    | 35 528                 |

## Revisions on these statistics

### Revision of annual volume change, %

|                               |                                         | 2003 | 2004 | 2005 | 2006 | 2007 | 2008 | 2009  | 2010 | 2011 | 2012 |
|-------------------------------|-----------------------------------------|------|------|------|------|------|------|-------|------|------|------|
| Gross domestic product        | 1. release                              | 1,9  | 3,7  | 2,1  | 5,5  | 4,4  | 0,9  | -7,8  | 3,1  | 2,9  | -0,2 |
|                               | Previous release                        | 2,0  | 4,1  | 2,9  | 4,4  | 5,3  | 0,3  | -8,5  | 3,4  | 2,7  | -0,8 |
|                               | Latest release                          | 2,0  | 4,1  | 2,9  | 4,4  | 5,3  | 0,3  | -8,5  | 3,4  | 2,8  | -1,0 |
|                               | Revision, %-points (latest minus first) | 0,1  | 0,4  | 0,8  | -1,1 | 0,9  | -0,6 | -0,7  | 0,3  | -0,1 | -0,8 |
| Imports                       | 1. release                              | 0,9  | 4,8  | 10,3 | 5,4  | 4,1  | -1,3 | -22,3 | 2,6  | 0,1  | -3,7 |
|                               | Previous release                        | 3,2  | 7,4  | 11,4 | 7,9  | 7,0  | 7,5  | -17,2 | 6,8  | 6,2  | -1,0 |
|                               | Latest release                          | 3,2  | 7,4  | 11,4 | 7,9  | 7,0  | 7,5  | -17,2 | 6,8  | 6,2  | -0,7 |
|                               | Revision, %-points (latest minus first) | 2,3  | 2,6  | 1,1  | 2,5  | 2,9  | 8,8  | 5,1   | 4,2  | 6,1  | 3,0  |
| Exports                       | 1. release                              | 1,3  | 3,5  | 7,0  | 10,7 | 4,8  | -1,1 | -24,3 | 5,1  | -0,8 | -1,4 |
|                               | Previous release                        | -1,9 | 8,2  | 7,0  | 12,2 | 8,2  | 5,8  | -21,3 | 7,9  | 2,7  | -0,2 |
|                               | Latest release                          | -1,9 | 8,2  | 7,0  | 12,2 | 8,2  | 5,8  | -21,3 | 7,9  | 2,8  | -0,2 |
|                               | Revision, %-points (latest minus first) | -3,2 | 4,7  | 0,0  | 1,5  | 3,4  | 6,9  | 3,0   | 2,8  | 3,6  | 1,2  |
| Final consumption expenditure | 1. release                              | 2,7  | 2,9  | 2,9  | 2,3  | 2,8  | 1,9  | -1,3  | 1,9  | 2,6  | 1,4  |
|                               | Previous release                        | 3,8  | 2,9  | 2,8  | 3,1  | 2,7  | 1,9  | -1,7  | 2,1  | 1,9  | 0,3  |
|                               | Latest release                          | 3,8  | 2,9  | 2,8  | 3,1  | 2,7  | 1,9  | -1,7  | 2,1  | 1,9  | 0,4  |
|                               | Revision, %-points (latest minus first) | 1,1  | 0,0  | -0,1 | 0,8  | -0,1 | 0,0  | -0,4  | 0,2  | -0,7 | -1,0 |
| Gross fixed capital formation | 1. release                              | -2,3 | 4,6  | 1,7  | 5,1  | 7,6  | 1,0  | -13,4 | 0,8  | 4,6  | -2,9 |
|                               | Previous release                        | 3,0  | 4,9  | 3,6  | 1,9  | 10,7 | -0,6 | -13,2 | 1,6  | 5,7  | -1,0 |
|                               | Latest release                          | 3,0  | 4,9  | 3,6  | 1,9  | 10,7 | -0,6 | -13,2 | 1,6  | 5,8  | -0,8 |
|                               | Revision, %-points (latest minus first) | 5,3  | 0,3  | 1,9  | -3,2 | 3,1  | -1,6 | 0,2   | 0,8  | 1,2  | 2,1  |

---

Suomen virallinen tilasto  
Finlands officiella statistik  
Official Statistics of Finland

Annual national accounts 2014

### Inquiries

Olli Savela 09 1734 3316

Tuomas Rothovius 09 1734 3360

Marjukka Monto 09 1734 3364

Director in charge:

Leena Storgårds

[kansantalous@stat.fi](mailto:kansantalous@stat.fi)

[www.stat.fi](http://www.stat.fi)

Source: National Accounts, Statistics Finland